



# SZABO SCANDIC

Part of Europa Biosite

## Produktinformation



Forschungsprodukte & Biochemikalien



Zellkultur & Verbrauchsmaterial



Diagnostik & molekulare Diagnostik



Laborgeräte & Service

Weitere Information auf den folgenden Seiten!  
See the following pages for more information!



### Lieferung & Zahlungsart

siehe unsere [Liefer- und Versandbedingungen](#)

### Zuschläge

- Mindermengenzuschlag
- Trockeneiszuschlag
- Gefahrgutzuschlag
- Expressversand

### SZABO-SCANDIC HandelsgmbH

Quellenstraße 110, A-1100 Wien

T. +43(0)1 489 3961-0

F. +43(0)1 489 3961-7

[mail@szabo-scandic.com](mailto:mail@szabo-scandic.com)

[www.szabo-scandic.com](http://www.szabo-scandic.com)

[linkedin.com/company/szaboscandic](https://www.linkedin.com/company/szaboscandic) 

## CTNNA2 293T Cell Transient Overexpression Lysate(Denatured)

Catalog # : H00001496-T01

規格 : [ 100 uL ]

[List All](#)

### Specification

**Transfected Cell Line:** 293T

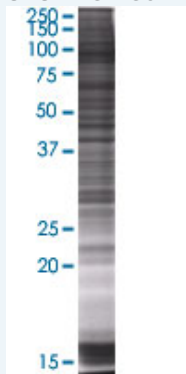
**Plasmid:** pCMV-CTNNA2 full-length

**Host:** Human

**Theoretical MW (kDa):** 99.66

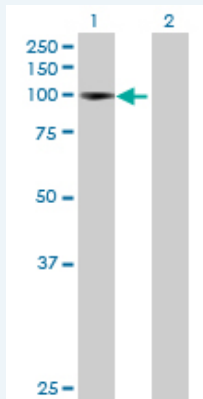
**Quality Control Testing:** Transient overexpression cell lysate was tested with Anti-CTNNA2 antibody ([H00001496-B01](#)) by Western Blots.

#### SDS-PAGE Gel



CTNNA2 transfected lysate.

#### Western Blot



Lane 1: CTNNA2 transfected lysate ( 99.66 KDa)

Lane 2: Non-transfected lysate.

**Storage Buffer:** 1X Sample Buffer (50 mM Tris-HCl, 2% SDS, 10% glycerol, 300 mM 2-mercaptoethanol, 0.01% Bromophenol blue)

**Storage Instruction:** Store at -80°C. Aliquot to avoid repeated freezing and thawing.

**MSDS:**  [Download](#)

### Applications

## Western Blot

### Gene Information

Entrez GeneID: [1496](#)

GeneBank [NM\\_004389.2](#)  
Accession#:

Protein [NP\\_004380.2](#)  
Accession#:

Gene Name: CTNNA2

Gene Alias: CAP-R,CAPR,CTNR,DKFZp686H02198

Gene Description: catenin (cadherin-associated protein), alpha 2

Omim ID: [114025](#)

Gene Ontology: [Hyperlink](#)

Other Designations: alpha-N-catenin,cadherin-associated protein, related,catenin, alpha 2

### Gene Pathway

[Adherens junction](#) [Arrhythmogenic right ventricular cardiomyopathy \(ARVC\)](#)  
[Endometrial cancer](#) [Leukocyte transendothelial migration](#) [Pathways in cancer](#)  
[Tight junction](#)

### Related Disease

[Attention Deficit Disorder with Hyperactivity](#) [Cardiovascular Diseases](#) [Celiac Disease](#)  
[Diabetes Mellitus, Type 2](#) [Edema](#) [Genetic Predisposition to Disease](#) [Tobacco Use Disorder](#)

[服務條款](#) | [隱私權政策](#) | [著作及商標](#) | [網站地圖](#)

©2016 亞諾法生技股份有限公司 Abnova Corporation. 版權所有.