



# SZABO SCANDIC

Part of Europa Biosite

## Produktinformation



Forschungsprodukte & Biochemikalien



Zellkultur & Verbrauchsmaterial



Diagnostik & molekulare Diagnostik



Laborgeräte & Service

Weitere Information auf den folgenden Seiten!  
See the following pages for more information!



### Lieferung & Zahlungsart

siehe unsere [Liefer- und Versandbedingungen](#)

### Zuschläge

- Mindermengenzuschlag
- Trockeneiszuschlag
- Gefahrgutzuschlag
- Expressversand

### SZABO-SCANDIC HandelsgmbH

Quellenstraße 110, A-1100 Wien

T. +43(0)1 489 3961-0

F. +43(0)1 489 3961-7

[mail@szabo-scandic.com](mailto:mail@szabo-scandic.com)

[www.szabo-scandic.com](http://www.szabo-scandic.com)

[linkedin.com/company/szaboscandic](https://www.linkedin.com/company/szaboscandic) 

## CTNNB1 monoclonal antibody (M02), clone 1C9

Catalog # : H00001499-M02

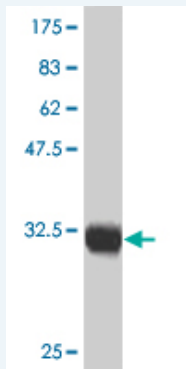
規格 : [ 100 ug ]

[List All](#)

### Specification

<b>Product Description:</b>	Mouse monoclonal antibody raised against a partial recombinant CTNNB1.
<b>Immunogen:</b>	CTNNB1 (AAH58926, 682 a.a. ~ 781 a.a) partial recombinant protein with GST tag. MW of the GST tag alone is 26 KDa.
<b>Sequence:</b>	LFRTEPMAWNETADLGLDIGAQGEPLGYRQDDPSYRSFHSGGYGQDALGMDPMMHEHEMGGHHPGADYPVDGLPDLGHAQDLMDGLPPGDSNQLA WFDTDL
<b>Host:</b>	Mouse
<b>Reactivity:</b>	Human
<b>Isotype:</b>	IgG2a Kappa

**Quality Control Testing:** Antibody Reactive Against Recombinant Protein.



Western Blot detection against Immunogen (36.74 KDa) .

**Storage Buffer:** In 1x PBS, pH 7.4

**Storage Instruction:** Store at -20°C or lower. Aliquot to avoid repeated freezing and thawing.

**MSDS:** [Download](#)

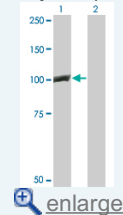
**Datasheet:** [Download](#)

### Applications

Western Blot (Transfected lysate)

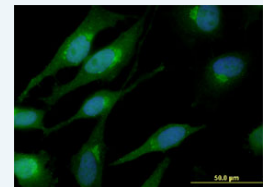
### Application Image

Western Blot (Transfected lysate)

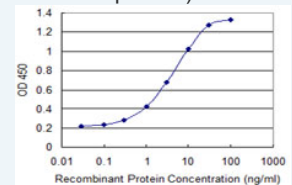


Western Blot (Recombinant protein)

Immunofluorescence



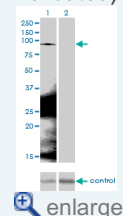
Sandwich ELISA (Recombinant protein)



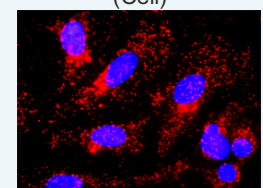
[enlarge](#)

ELISA

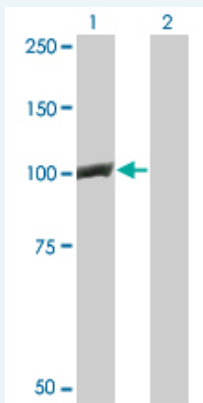
RNAi Knockdown (Antibody validated)



*In situ* Proximity Ligation Assay (Cell)



*In situ* Proximity Ligation Assay (Cell)



Western Blot analysis of CTNNB1 expression in transfected 293T cell line by CTNNB1 monoclonal antibody (M02), clone 1C9.

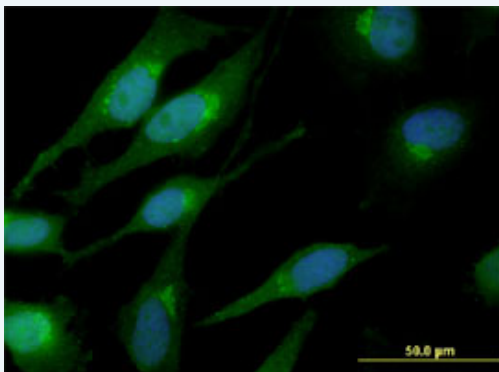
Lane 1: CTNNB1 transfected lysate(85.5 KDa).  
Lane 2: Non-transfected lysate.

[Protocol Download](#)

### Western Blot (Recombinant protein)

[Protocol Download](#)

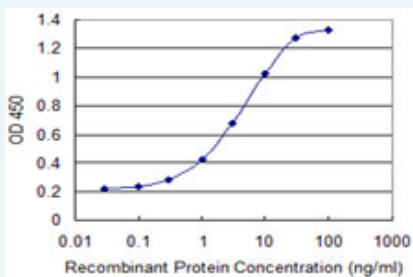
### Immunofluorescence



Immunofluorescence of monoclonal antibody to CTNNB1 on HeLa cell. [antibody concentration 10 ug/ml]

[Protocol Download](#)

### Sandwich ELISA (Recombinant protein)

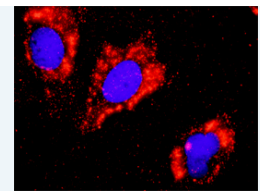


Detection limit for recombinant GST tagged CTNNB1 is 0.1 ng/ml as a capture antibody.

[Protocol Download](#)

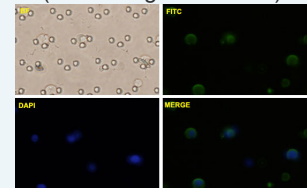
### ELISA

### RNAi Knockdown (Antibody validated)

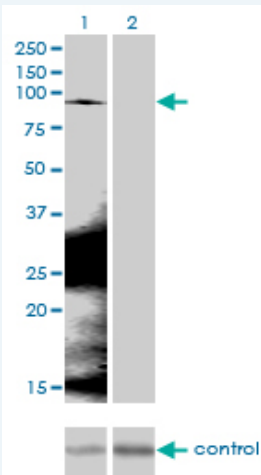


[enlarge](#)

Immunofluorescence  
(Circulating Tumor Cell)



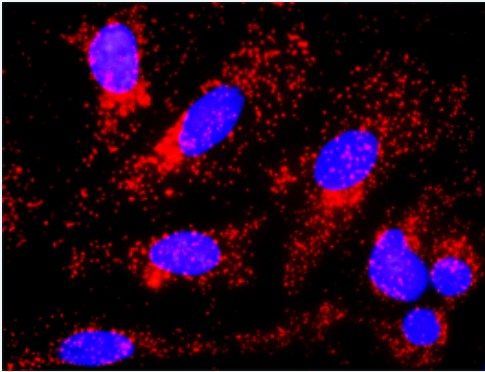
[enlarge](#)



Western blot analysis of CTNNB1 over-expressed 293 cell line, cotransfected with CTNNB1 Validated Chimera RNAi ( Cat # H00001499-R01V ) (Lane 2) or non-transfected control (Lane 1). Blot probed with CTNNB1 monoclonal antibody (M02), clone 1C9 (Cat # H00001499-M02 ). GAPDH ( 36.1 kDa ) used as specificity and loading control.

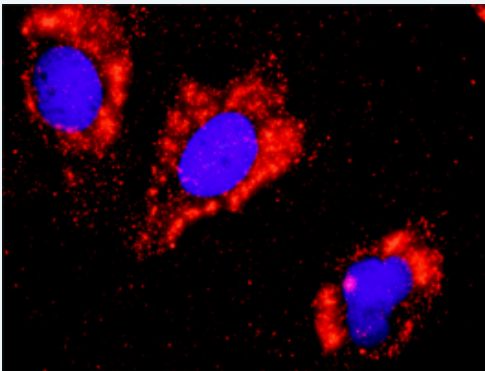
 [Protocol Download](#)

#### ***In situ* Proximity Ligation Assay (Cell)**



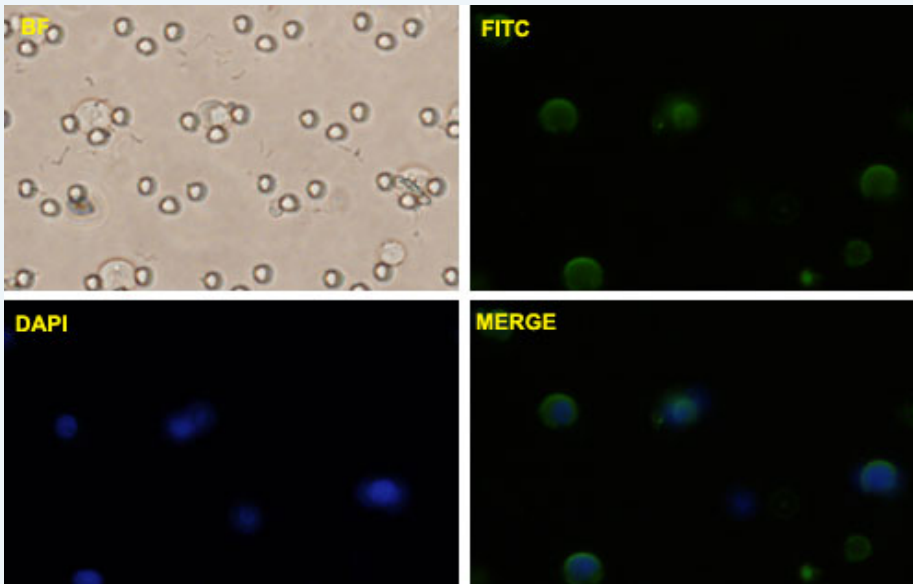
Proximity Ligation Analysis of protein-protein interactions between GSK3B and CTNNB1. HeLa cells were stained with anti-GSK3B rabbit purified polyclonal 1:1200 and anti-CTNNB1 mouse monoclonal antibody 1:50. Each red dot represents the detection of protein-protein interaction complex, and nuclei were counterstained with DAPI (blue).

#### ***In situ* Proximity Ligation Assay (Cell)**



Proximity Ligation Analysis of protein-protein interactions between FLT1 and CTNNB1. Huh7 cells were stained with anti-FLT1 rabbit purified polyclonal 1:1200 and anti-CTNNB1 mouse monoclonal antibody 1:50. Each red dot represents the detection of protein-protein interaction complex, and nuclei were counterstained with DAPI (blue).

#### **Immunofluorescence (Circulating Tumor Cell)**



PC-3 MM2 cells were stained with CTNNB1-FITC labeled monoclonal antibody (Green). The cell nucleus were counterstained with DAPI (Blue).

### Gene Information

Entrez GeneID: [1499](#)

GeneBank Accession#: [NM\\_001904](#)

Protein Accession#: [AAH58926](#)

Gene Name: CTNNB1

Gene Alias: CTNNB, DKFZp686D02253, FLJ25606, FLJ37923

Gene Description: catenin (cadherin-associated protein), beta 1, 88kDa

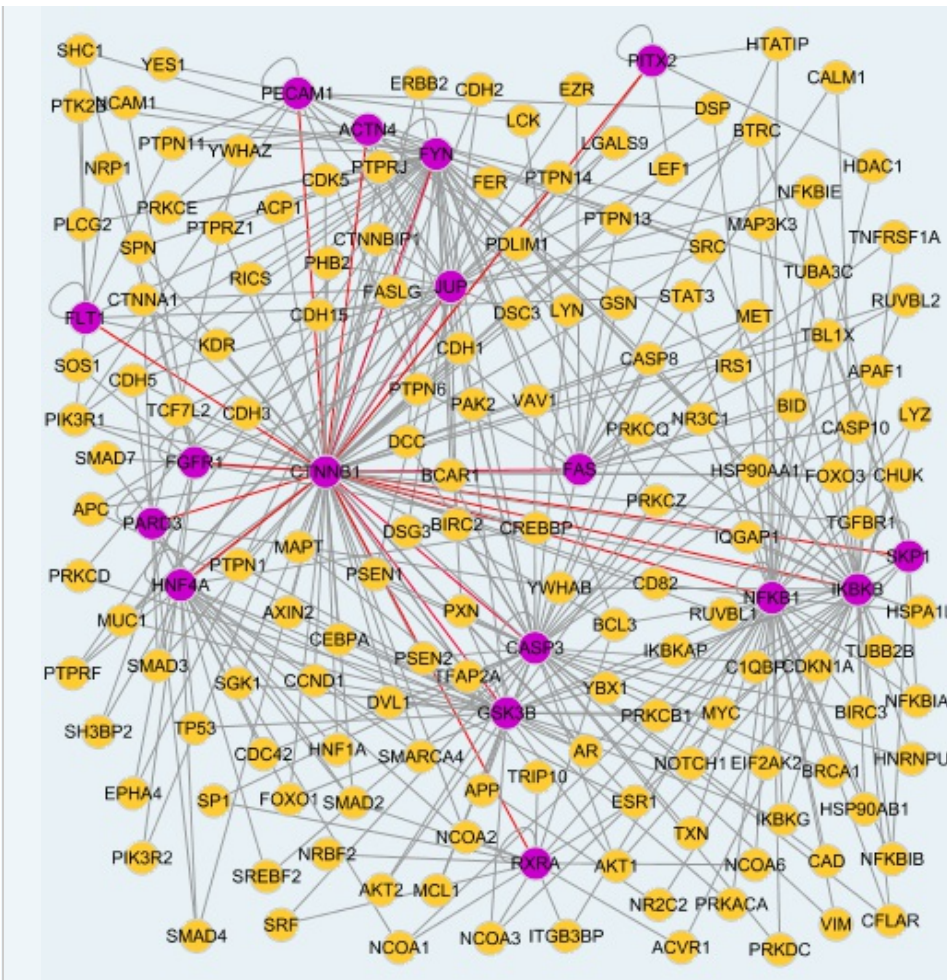
Omim ID: [114550](#), [116806](#), [132600](#), [155255](#)

Gene Ontology: [Hyperlink](#)

**Gene Summary:** Beta-catenin is an adherens junction protein. Adherens junctions (AJs; also called the zonula adherens) are critical for the establishment and maintenance of epithelial layers, such as those lining organ surfaces. AJs mediate adhesion between cells, communicate a signal that neighboring cells are present, and anchor the actin cytoskeleton. In serving these roles, AJs regulate normal cell growth and behavior. At several stages of embryogenesis, wound healing, and tumor cell metastasis, cells form and leave epithelia. This process, which involves the disruption and reestablishment of epithelial cell-cell contacts, may be regulated by the disassembly and assembly of AJs. AJs may also function in the transmission of the 'contact inhibition' signal, which instructs cells to stop dividing once an epithelial sheet is complete. [supplied by OMIM]

Other Designations: OTTHUMP00000165222, OTTHUMP00000165223, catenin (cadherin-associated protein), beta 1 (88kD), catenin beta-1

### Interactome



### Gene Pathway

[Adherens junction](#)
[Arrhythmogenic right ventricular cardiomyopathy \(ARVC\)](#)  
[Basal cell carcinoma](#)
[Colorectal cancer](#)
[Endometrial cancer](#)
[Focal adhesion](#)  
[Leukocyte transendothelial migration](#)
[Melanogenesis](#)  
[Pathogenic Escherichia coli infection - EHEC Pathways in cancer](#)
[Prostate cancer](#)  
[Thyroid cancer](#)
[Tight junction](#)
[Wnt signaling pathway](#)

### Related Disease

[Adenoma](#)
[Adrenal Cortex Neoplasms](#)
[Alzheimer Disease](#)
[Alzheimer disease](#)
[Birth Weight](#)  
[Breast cancer](#)
[Breast Neoplasms](#)
[Carcinoma, Ductal, Breast](#)
[Carcinoma, Endometrioid](#)  
[Carcinoma, Hepatocellular](#)
[Cardiovascular Diseases](#)
[Cell Transformation, Neoplastic](#)  
[Chromosome Aberrations](#)
[Chromosome Deletion](#)
[Cleft Lip](#)
[Cleft Palate](#)
[Cognition](#)  
[Colon cancer](#)
[Colorectal Neoplasms](#)

... see more

服務條款 | 隱私權政策 | 著作及商標 | 網站地圖

©2016 亞諾法生技股份有限公司 Abnova Corporation. 版權所有.