



# SZABO SCANDIC

Part of Europa Biosite

## Produktinformation



Forschungsprodukte & Biochemikalien



Zellkultur & Verbrauchsmaterial



Diagnostik & molekulare Diagnostik



Laborgeräte & Service

Weitere Information auf den folgenden Seiten!  
See the following pages for more information!



### Lieferung & Zahlungsart

siehe unsere [Liefer- und Versandbedingungen](#)

### Zuschläge

- Mindermengenzuschlag
- Trockeneiszuschlag
- Gefahrgutzuschlag
- Expressversand

### SZABO-SCANDIC HandelsgmbH

Quellenstraße 110, A-1100 Wien

T. +43(0)1 489 3961-0

F. +43(0)1 489 3961-7

[mail@szabo-scandic.com](mailto:mail@szabo-scandic.com)

[www.szabo-scandic.com](http://www.szabo-scandic.com)

[linkedin.com/company/szaboscandic](https://www.linkedin.com/company/szaboscandic) 

# CTNND1 purified MaxPab rabbit polyclonal antibody (D01P) MaxPab®

Catalog # : H00001500-D01P

規格 : [ 100 ug ]

[List All](#)

## Specification

**Product Description:** Rabbit polyclonal antibody raised against a full-length human CTNND1 protein.

**Immunogen:** CTNND1 (AAH10501.1, 1 a.a. ~ 610 a.a) full-length human protein.

**Sequence:**  
 MIGEEVPSDQYYWAPLAQHERGSLASLDSLKGGPPPPNWRQPELPEVI  
 AMLGFRLDAVKSNAAAAYLQHLCYRNDKVKTDVRKLGIPVLVGLLDHPKK  
 EVHLGACGALKNISFGRDQDNKIAIKNCDGVPALVRLLRKARDMDLTEVIT  
 GTLWNLSSHDSIKMEIVDHALHALTDEVIIPHSGWEREPNEDCKPRHIEWE  
 SVLTNTAGCLRNVSSERSEARRKLRECDGLVDALIFVQAEIGQKDSK  
 LVENCVLLRNLSYQVHREIPQAERYQEAAPNVANNTGPHAASCFGAKK  
 GKGGKPIEDPANDTVDFPKRTSPARGYELLFQPEVVRIYISLLKESKTPAIL  
 EASAGAIQNL CAGRWTYGRYIRSALRQEKALSAIADLLTNEHERVVKAAS  
 GALRNLAVDARNKELIGKHAIPNLVKNLPGGQQNSSWNFSEDTVISILNTIN  
 EVIAENLEAAKKLRETQGIEKLVLINKSGNRSEKEVRAAALVLTWGYKEL  
 RKPLEKEGWKKSDFQVNLNNASRSQSSHSYDDSTLPLIDRNQKSDKKPD  
 REEIQMSNMGSNTKSLDNNYSTPNERGDHNKTLDRSGDLGDMEPLKGT  
 TPLMQKI

**Host:** Rabbit

**Reactivity:** Human

**Quality Control Testing:** Antibody reactive against mammalian transfected lysate.

**Storage Buffer:** In 1x PBS, pH 7.4

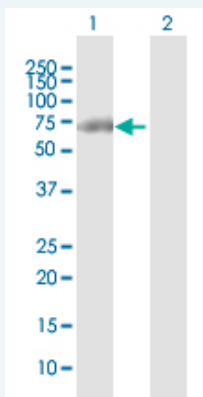
**Storage Instruction:** Store at -20°C or lower. Aliquot to avoid repeated freezing and thawing.

**MSDS:** [Download](#)

**Datasheet:** [Download](#)

## Applications

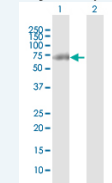
### Western Blot (Transfected lysate)



Western Blot analysis of CTNND1 expression in transfected 293T cell line ([H00001500-T01](#)) by CTNND1 MaxPab polyclonal antibody.

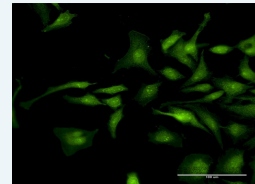
## Application Image

### Western Blot (Transfected lysate)



[enlarge](#)

### Immunofluorescence

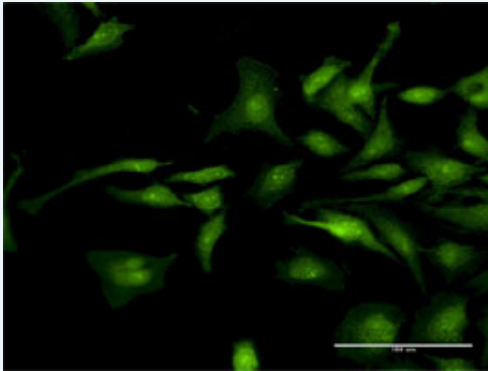



[enlarge](#)

Lane 1: CTNND1 transfected lysate(67.10 KDa).  
Lane 2: Non-transfected lysate.

 [Protocol Download](#)

### Immunofluorescence



 [enlarge this image](#)

Immunofluorescence of purified MaxPab antibody to CTNND1 on HeLa cell. [antibody concentration 30 ug/ml]

 [Protocol Download](#)

### Gene Information

Entrez GeneID: [1500](#)

GeneBank Accession#: [BC010501.1](#)

Protein Accession#: [AAH10501.1](#)

Gene Name: CTNND1

Gene Alias: CAS,CTNND,KIAA0384,P120CAS,P120CTN,p120

Gene Description: catenin (cadherin-associated protein), delta 1

Omim ID: [601045](#)

Gene Ontology: [Hyperlink](#)

**Gene Summary:** This gene encodes a member of the Armadillo protein family, which function in adhesion between cells and signal transduction. Multiple translation initiation codons and alternative splicing result in many different isoforms being translated. Not all of the full-length natures of the described transcript variants have been determined. [provided by RefSeq]

Other Designations: catenin, delta 1

### Gene Pathway

[Adherens junction](#) [Leukocyte transendothelial migration](#)