



# SZABO SCANDIC

Part of Europa Biosite

## Produktinformation



Forschungsprodukte & Biochemikalien



Zellkultur & Verbrauchsmaterial



Diagnostik & molekulare Diagnostik



Laborgeräte & Service

Weitere Information auf den folgenden Seiten!  
See the following pages for more information!



### Lieferung & Zahlungsart

siehe unsere [Liefer- und Versandbedingungen](#)

### Zuschläge

- Mindermengenzuschlag
- Trockeneiszuschlag
- Gefahrgutzuschlag
- Expressversand

### SZABO-SCANDIC HandelsgmbH

Quellenstraße 110, A-1100 Wien

T. +43(0)1 489 3961-0

F. +43(0)1 489 3961-7

[mail@szabo-scandic.com](mailto:mail@szabo-scandic.com)

[www.szabo-scandic.com](http://www.szabo-scandic.com)

[linkedin.com/company/szaboscandic](https://www.linkedin.com/company/szaboscandic) 



**CTRB1 purified MaxPab mouse polyclonal antibody (B01P)** MaxPab®

Catalog # : H00001504-B01P

規格 : [ 50 ug ]

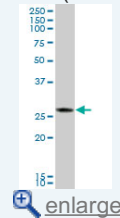
List All

**Specification**

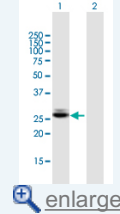
<b>Product Description:</b>	Mouse polyclonal antibody raised against a full-length human CTRB1 protein.
<b>Immunogen:</b>	CTRB1 (AAH05385, 1 a.a. ~ 263 a.a) full-length human protein.
<b>Sequence:</b>	MAFLWLLSCWALLGTTFGCGVPAIHPVLSGLSRVNGEDAVPGSWPWQ VSLQDKTGFHFCCGGLISEDWVWTAHCGVRTSDVWVAGEFDQGSDEE NIQVLKIAKVFKNPKFSILTVNNDITLLKLATPARFSQTVSAVCLPSADDDF PAGTLCATTGWGKTKYNANKTPDKLQQAALPLLSNAECKKSWGRRITD VMICAGASGVSSCMGDSGGPLVCQKDGAWTLVGIVSWGSDTCSTSSP GVYARVTKLIPWVQKILAAAN
<b>Host:</b>	Mouse
<b>Reactivity:</b>	Human
<b>Quality Control Testing:</b>	Antibody reactive against mammalian transfected lysate.
<b>Storage Buffer:</b>	In 1x PBS, pH 7.4
<b>Storage Instruction:</b>	Store at -20°C or lower. Aliquot to avoid repeated freezing and thawing.
<b>MSDS:</b>	 <a href="#">Download</a>
<b>Datasheet:</b>	 <a href="#">Download</a>

**Application Image**

Western Blot (Tissue lysate)

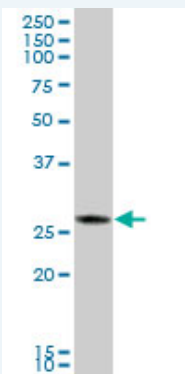


Western Blot (Transfected lysate)



**Applications**

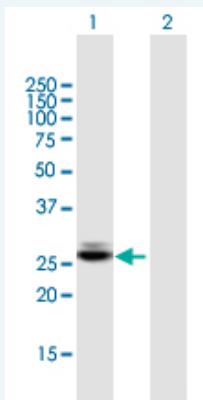
Western Blot (Tissue lysate)



CTRB1 MaxPab polyclonal antibody. Western Blot analysis of CTRB1 expression in human pancreas.


 [Protocol Download](#)

Western Blot (Transfected lysate)



Western Blot analysis of CTRB1 expression in transfected 293T cell line ([H00001504-T01](#)) by CTRB1 MaxPab polyclonal antibody.

Lane 1: CTRB1 transfected lysate(28.93 KDa).  
Lane 2: Non-transfected lysate.

 [Protocol Download](#)

### Gene Information

Entrez GeneID: [1504](#)

GeneBank [BC005385.1](#)  
Accession#:

Protein [AAH05385](#)  
Accession#:

Gene Name: CTRB1

Gene Alias: CTRB,FLJ42412,MGC88037

Gene [chymotrypsinogen B1](#)  
Description:

Omim ID: [118890](#)

Gene Ontology: [Hyperlink](#)

**Gene Summary:** Alpha-chymotrypsin (EC 3.4.21.1) is one of a family of serine proteases secreted into the gastrointestinal tract as the inactive precursor chymotrypsinogen. The zymogen is activated by proteolytic cleavage by trypsin (PRSS1; MIM 276000).[supplied by OMIM]

Other -  
Designations:

### Related Disease

[Genetic Predisposition to Disease](#)