



SZABO SCANDIC

Part of Europa Biosite

Produktinformation



Forschungsprodukte & Biochemikalien



Zellkultur & Verbrauchsmaterial



Diagnostik & molekulare Diagnostik



Laborgeräte & Service

Weitere Information auf den folgenden Seiten!
See the following pages for more information!



Lieferung & Zahlungsart

siehe unsere [Liefer- und Versandbedingungen](#)

Zuschläge

- Mindermengenzuschlag
- Trockeneiszuschlag
- Gefahrgutzuschlag
- Expressversand

SZABO-SCANDIC HandelsgmbH

Quellenstraße 110, A-1100 Wien

T. +43(0)1 489 3961-0

F. +43(0)1 489 3961-7

mail@szabo-scandic.com

www.szabo-scandic.com

[linkedin.com/company/szaboscandic](https://www.linkedin.com/company/szaboscandic) 



CTRB1 purified MaxPab mouse polyclonal antibody (B02P) MaxPab®

Catalog # : H00001504-B02P

規格 : [50 ug]

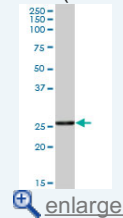
List All

Specification

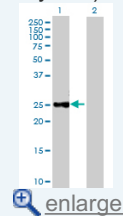
Product Description:	Mouse polyclonal antibody raised against a full-length human CTRB1 protein.
Immunogen:	CTRB1 (AAH05385.1, 1 a.a. ~ 263 a.a) full-length human protein.
Sequence:	MAFLWLLSCWALLGTTFGCGVPAIHPVLSGLSRVNGEDAVPGSWPWQ VSLQDKTGFHFCCGSLISEDWVWTAHCGVRTSDVWVAGEFDQGSDEE NIQVLKIAKVFKNPKFSILTVNNDITLLKLATPARFSQTVSAVCLPSADDDF PAGTLCATTGWGKTKYNANKTPDKLQQAALPLLSNAECKKSWGRRITD VMICAGASGVSSCMGDSGGPLVCQKDGAWTLVGIVSWGSDTCSTSSP GVYARVTKLIPWVQKILAAAN
Host:	Mouse
Reactivity:	Human
Quality Control Testing:	Antibody reactive against mammalian transfected lysate.
Storage Buffer:	In 1x PBS, pH 7.4
Storage Instruction:	Store at -20°C or lower. Aliquot to avoid repeated freezing and thawing.
MSDS:	 Download
Datasheet:	 Download

Application Image

Western Blot (Tissue lysate)

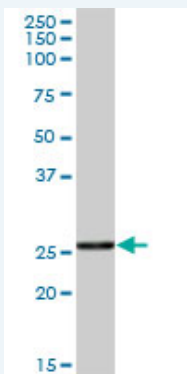


Western Blot (Transfected lysate)



Applications

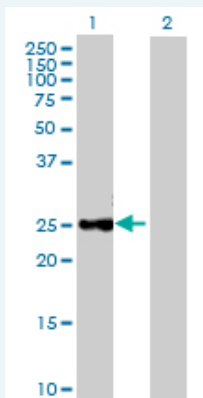
Western Blot (Tissue lysate)



CTRB1 MaxPab polyclonal antibody. Western Blot analysis of CTRB1 expression in human pancreas.

 [Protocol Download](#)


Western Blot (Transfected lysate)



Western Blot analysis of CTRB1 expression in transfected 293T cell line ([H00001504-T02](#)) by CTRB1 MaxPab polyclonal antibody.

Lane 1: CTRB1 transfected lysate(28.93 KDa).

Lane 2: Non-transfected lysate.

 [Protocol Download](#)

Gene Information

Entrez GeneID: [1504](#)

GeneBank [NM_001906.3](#)

Accession#:

Protein [AAH05385.1](#)

Accession#:

Gene Name: CTRB1

Gene Alias: CTRB,FLJ42412,MGC88037

Gene chymotrypsinogen B1

Description:

Omim ID: [118890](#)

Gene Ontology: [Hyperlink](#)

Gene Summary: Alpha-chymotrypsin (EC 3.4.21.1) is one of a family of serine proteases secreted into the gastrointestinal tract as the inactive precursor chymotrypsinogen. The zymogen is activated by proteolytic cleavage by trypsin (PRSS1; MIM 276000).[supplied by OMIM]

Other -
Designations:

Related Disease

[Genetic Predisposition to Disease](#)

[服務條款](#) | [隱私權政策](#) | [著作及商標](#) | [網站地圖](#)

©2016 亞諾法生技股份有限公司 Abnova Corporation. 版權所有.