



SZABO SCANDIC

Part of Europa Biosite

Produktinformation



Forschungsprodukte & Biochemikalien



Zellkultur & Verbrauchsmaterial



Diagnostik & molekulare Diagnostik



Laborgeräte & Service

Weitere Information auf den folgenden Seiten!
See the following pages for more information!



Lieferung & Zahlungsart

siehe unsere [Liefer- und Versandbedingungen](#)

Zuschläge

- Mindermengenzuschlag
- Trockeneiszuschlag
- Gefahrgutzuschlag
- Expressversand

SZABO-SCANDIC HandelsgmbH

Quellenstraße 110, A-1100 Wien

T. +43(0)1 489 3961-0

F. +43(0)1 489 3961-7

mail@szabo-scandic.com

www.szabo-scandic.com

[linkedin.com/company/szaboscandic](https://www.linkedin.com/company/szaboscandic) 

CTRB1 monoclonal antibody (M02), clone 3C8

Catalog # : H00001504-M02

規格 : [100 ug]

[List All](#)

Specification

Product Description:	Mouse monoclonal antibody raised against a partial recombinant CTRB1.
Immunogen:	CTRB1 (NP_001897, 101 a.a. ~ 200 a.a) partial recombinant protein with GST tag. MW of the GST tag alone is 26 KDa.
Sequence:	LKIAKVFKNPKFSILTVNNDITLLKLATPARFSQTVSAVCLPSADDDFPAG TLCATTGWGKTKYNANKTPDKLQQAALPLLSNAECKKSWGRRITDVMIC
Host:	Mouse
Reactivity:	Human
Isotype:	IgG2a Kappa

Quality Control Testing: Antibody Reactive Against Recombinant Protein.



Western Blot detection against Immunogen (36.74 KDa) .

Storage Buffer: In 1x PBS, pH 7.4

Storage Instruction: Store at -20°C or lower. Aliquot to avoid repeated freezing and thawing.

MSDS: [Download](#)

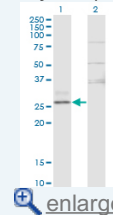
Datasheet: [Download](#)

Applications

Western Blot (Transfected lysate)

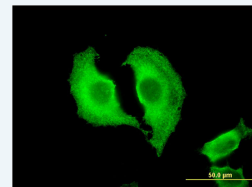
Application Image

Western Blot (Transfected lysate)

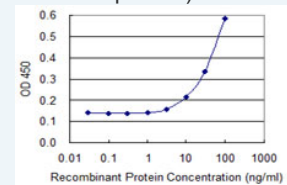


Western Blot (Recombinant protein)

Immunofluorescence

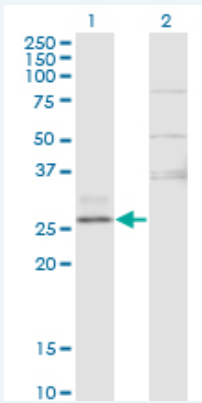


Sandwich ELISA (Recombinant protein)



[enlarge](#)

ELISA



Western Blot analysis of CTRB1 expression in transfected 293T cell line by CTRB1 monoclonal antibody (M02), clone 3C8.

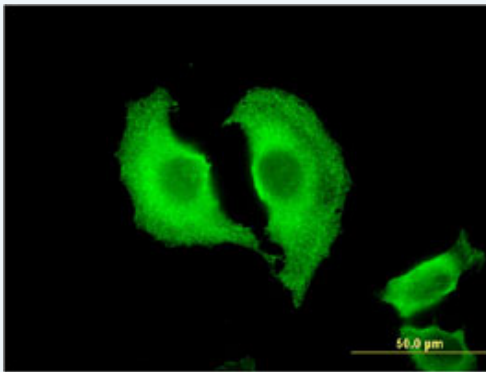
Lane 1: CTRB1 transfected lysate (Predicted MW: 27.9 KDa).
Lane 2: Non-transfected lysate.

[Protocol Download](#)

Western Blot (Recombinant protein)

[Protocol Download](#)

Immunofluorescence

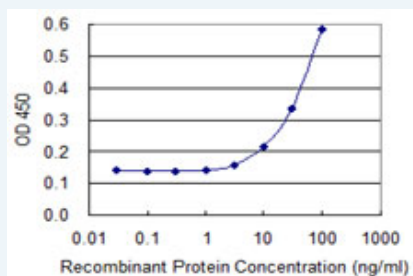


[enlarge this image](#)

Immunofluorescence of monoclonal antibody to CTRB1 on HeLa cell . [antibody concentration 10 ug/ml]

[Protocol Download](#)

Sandwich ELISA (Recombinant protein)



Detection limit for recombinant GST tagged CTRB1 is 3 ng/ml as a capture antibody.

[Protocol Download](#)

ELISA

Gene Information

Entrez GeneID: [1504](#)

GeneBank [NM_001906](#)

Accession#:

Protein [NP_001897](#)

Accession#:

Gene Name: CTRB1

Gene Alias: CTRB,FLJ42412,MGC88037

Gene Description: chymotrypsinogen B1

Omim ID: [118890](#)

Gene Ontology: [Hyperlink](#)

Gene Summary: Alpha-chymotrypsin (EC 3.4.21.1) is one of a family of serine proteases secreted into the gastrointestinal tract as the inactive precursor chymotrypsinogen. The zymogen is activated by proteolytic cleavage by trypsin (PRSS1; MIM 276000).[supplied by OMIM]

Other Designations: -

Related Disease

[Genetic Predisposition to Disease](#)

[服務條款](#) | [隱私權政策](#) | [著作及商標](#) | [網站地圖](#)

©2016 亞諾法生技股份有限公司 Abnova Corporation. 版權所有.