



SZABO SCANDIC

Part of Europa Biosite

Produktinformation



Forschungsprodukte & Biochemikalien



Zellkultur & Verbrauchsmaterial



Diagnostik & molekulare Diagnostik



Laborgeräte & Service

Weitere Information auf den folgenden Seiten!
See the following pages for more information!



Lieferung & Zahlungsart

siehe unsere [Liefer- und Versandbedingungen](#)

Zuschläge

- Mindermengenzuschlag
- Trockeneiszuschlag
- Gefahrgutzuschlag
- Expressversand

SZABO-SCANDIC HandelsgmbH

Quellenstraße 110, A-1100 Wien

T. +43(0)1 489 3961-0

F. +43(0)1 489 3961-7

mail@szabo-scandic.com

www.szabo-scandic.com

[linkedin.com/company/szaboscandic](https://www.linkedin.com/company/szaboscandic) 

CTSB purified MaxPab mouse polyclonal antibody (B01P) MaxPab®

Catalog # : H00001508-B01P

規格 : [50 ug]

[List All](#)

Specification

Product Description: Mouse polyclonal antibody raised against a full-length human CTSB protein.

Immunogen: CTSB (NP_001899.1, 1 a.a. ~ 339 a.a) full-length human protein.

Sequence:
 MWQLWASLCCLLVLANARSRPSFHPLSDELVNYVNRNTTWQAGHNFY
 NVDMSYLKRLCGTFLGGPKPPQRVMFTEDLKLPAFDAREQWPQCPTI
 KEIRDQGSCGSCWAFGAVEAISDRICHTNAHVSVEVSAEDLLTCCGSMC
 GDGCNGGYPAEAWNFWTRKGLVSGGLYESHVGCPRYSIPPCEHHVNG
 SRPPCTGEGDTPKCSKICEPGYSPTYKQDKHYGNSYSVSNSEKDIMAEI
 YKNGPVEGAFSVYSDFLLYKSGVYQHVTGEMMGGHAIRILGWGVENGT
 PYWLANSWNTDWGDNGFFKILRGQDHCIESEVWAGIPRTDQYWEKI

Host: Mouse

Reactivity: Human

Quality Control Testing: Antibody reactive against mammalian transfected lysate.

Storage Buffer: In 1x PBS, pH 7.4

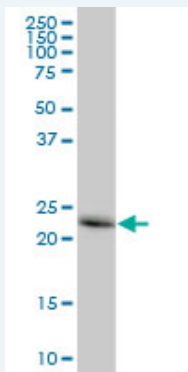
Storage Instruction: Store at -20°C or lower. Aliquot to avoid repeated freezing and thawing.

MSDS: [Download](#)

Datasheet: [Download](#)

Applications

Western Blot (Tissue lysate)



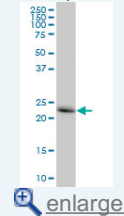
CTSB MaxPab polyclonal antibody. Western Blot analysis of CTSB expression in human liver.

[Protocol Download](#)

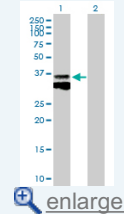
Western Blot (Transfected lysate)

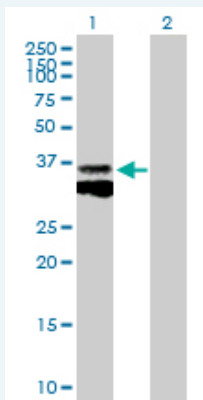
Application Image

Western Blot (Tissue lysate)



Western Blot (Transfected lysate)





Western Blot analysis of CTSB expression in transfected 293T cell line (H00001508-T01) by CTSB MaxPab polyclonal antibody.

Lane 1: CTSB transfected lysate(37.29 KDa).
Lane 2: Non-transfected lysate.

 Protocol Download

Gene Information

Entrez GeneID: [1508](#)

GeneBank Accession#: [NM_001908.3](#)

Protein Accession#: [NP_001899.1](#)

Gene Name: CTSB

Gene Alias: APPS,CPSB

Gene Description: cathepsin B

Omim ID: [116810](#)

Gene Ontology: [Hyperlink](#)

Gene Summary: The protein encoded by this gene is a lysosomal cysteine proteinase composed of a dimer of disulfide-linked heavy and light chains, both produced from a single protein precursor. It is also known as amyloid precursor protein secretase and is involved in the proteolytic processing of amyloid precursor protein (APP). Incomplete proteolytic processing of APP has been suggested to be a causative factor in Alzheimer disease, the most common cause of dementia. Overexpression of the encoded protein, which is a member of the peptidase C1 family, has been associated with esophageal adenocarcinoma and other tumors. At least five transcript variants encoding the same protein have been found for this gene. [provided by RefSeq]

Other Designations: APP secretase,OTTHUMP00000116009,amyloid precursor protein secretase,cathepsin B1,cysteine protease,preprocathepsin B

Gene Pathway

[Antigen processing and presentation](#) [Lysosome](#)

Related Disease

[Adenocarcinoma](#) [Calcinosis](#) [Cardiovascular Diseases](#) [Diabetes Mellitus, Type 2](#) [Edema](#) [Genetic Predisposition to Disease](#) [Kidney Failure, Chronic](#) [Pancreatitis](#) [Pancreatitis, Chronic](#) [Prostatic Neoplasms](#) [Urinary Bladder Neoplasms](#)

