



SZABO SCANDIC

Part of Europa Biosite

Produktinformation



Forschungsprodukte & Biochemikalien



Zellkultur & Verbrauchsmaterial



Diagnostik & molekulare Diagnostik



Laborgeräte & Service

Weitere Information auf den folgenden Seiten!
See the following pages for more information!



Lieferung & Zahlungsart

siehe unsere [Liefer- und Versandbedingungen](#)

Zuschläge

- Mindermengenzuschlag
- Trockeneiszuschlag
- Gefahrgutzuschlag
- Expressversand

SZABO-SCANDIC HandelsgmbH

Quellenstraße 110, A-1100 Wien

T. +43(0)1 489 3961-0

F. +43(0)1 489 3961-7

mail@szabo-scandic.com

www.szabo-scandic.com

[linkedin.com/company/szaboscandic](https://www.linkedin.com/company/szaboscandic) 

CTSB 293T Cell Transient Overexpression Lysate(Denatured)

Catalog # : H00001508-T01

規格 : [100 uL]

List All

Specification

Transfected Cell Line: 293T

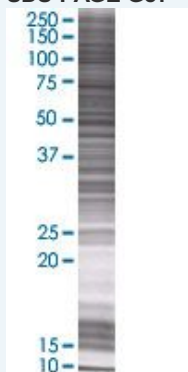
Plasmid: pCMV-CTSB full-length

Host: Human

Theoretical MW (kDa): 37.4

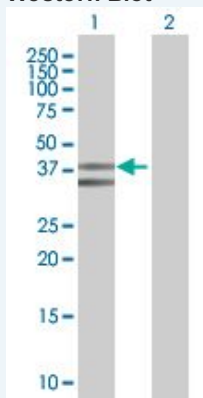
Quality Control Testing: Transient overexpression cell lysate was tested with Anti-CTSB antibody (H00001508-B01) by Western Blots.

SDS-PAGE Gel



CTSB transfected lysate.

Western Blot



Lane 1: CTSB transfected lysate (37.4 KDa)

Lane 2: Non-transfected lysate.

Storage Buffer: 1X Sample Buffer (50 mM Tris-HCl, 2% SDS, 10% glycerol, 300 mM 2-mercaptoethanol, 0.01% Bromophenol blue)

Storage Instruction: Store at -80°C. Aliquot to avoid repeated freezing and thawing.

MSDS:  [Download](#)

Applications

Western Blot

Gene Information

Entrez GeneID: [1508](#)

GeneBank Accession#: [NM_001908.3](#)

Protein Accession#: [NP_001899.1](#)

Gene Name: CTSB

Gene Alias: APPS,CPSB

Gene Description: cathepsin B

Omim ID: [116810](#)

Gene Ontology: [Hyperlink](#)

Gene Summary: The protein encoded by this gene is a lysosomal cysteine proteinase composed of a dimer of disulfide-linked heavy and light chains, both produced from a single protein precursor. It is also known as amyloid precursor protein secretase and is involved in the proteolytic processing of amyloid precursor protein (APP). Incomplete proteolytic processing of APP has been suggested to be a causative factor in Alzheimer disease, the most common cause of dementia. Overexpression of the encoded protein, which is a member of the peptidase C1 family, has been associated with esophageal adenocarcinoma and other tumors. At least five transcript variants encoding the same protein have been found for this gene. [provided by RefSeq]

Other Designations: APP secretase,OTTHUMP00000116009,amyloid precursor protein secretase,cathepsin B1,cysteine protease,preprocathepsin B

Gene Pathway

[Antigen processing and presentation](#) [Lysosome](#)

Related Disease

[Adenocarcinoma](#) [Calcinosis](#) [Cardiovascular Diseases](#) [Diabetes Mellitus, Type 2](#) [Edema](#) [Genetic Predisposition to Disease](#) [Kidney Failure, Chronic](#) [Pancreatitis](#) [Pancreatitis, Chronic](#) [Prostatic Neoplasms](#) [Urinary Bladder Neoplasms](#)