



SZABO SCANDIC

Part of Europa Biosite

Produktinformation



Forschungsprodukte & Biochemikalien



Zellkultur & Verbrauchsmaterial



Diagnostik & molekulare Diagnostik



Laborgeräte & Service

Weitere Information auf den folgenden Seiten!
See the following pages for more information!



Lieferung & Zahlungsart

siehe unsere [Liefer- und Versandbedingungen](#)

Zuschläge

- Mindermengenzuschlag
- Trockeneiszuschlag
- Gefahrgutzuschlag
- Expressversand

SZABO-SCANDIC HandelsgmbH

Quellenstraße 110, A-1100 Wien

T. +43(0)1 489 3961-0

F. +43(0)1 489 3961-7

mail@szabo-scandic.com

www.szabo-scandic.com

[linkedin.com/company/szaboscandic](https://www.linkedin.com/company/szaboscandic) 

CTSD polyclonal antibody (A01)

Catalog # : H00001509-A01

規格 : [50 uL]

List All

Specification

Product Description: Mouse polyclonal antibody raised against a full-length recombinant CTSD.

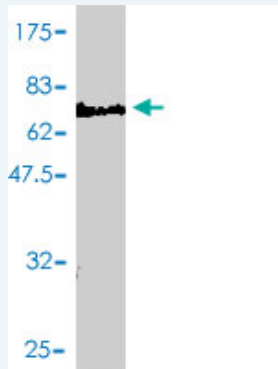
Immunogen: CTSD (AAH16320, 26 a.a. ~ 412 a.a) full-length recombinant protein with GST tag.

Sequence:
 LHKFTSIRRTMSEVGGSVEDLIAKGPVSKYSQAVPAVTEGPIPEVLKNYM
 DAQYYGEIGIGTPPQCFTVVFDTGSSNLWVPSIHCKLLDIACWIHHKYN
 KSSTYVKNGTSFDIHYGSGSLSGYLSQDTVSVPCQSASSASALGGVKVE
 RQVFGKATKQPGITFIAAKFDGILGMAYPRISVNNVLPVFDNLMQQKLV
 QNFSFYLSRDPDAQPGGELMLGGTDSKYYKGSLSYLVNTRKAYWQVH
 LDQVEVASGLTLCKEGCEAVDTGTSMLMGPVDEVRELQKAIGAVPLIQG
 EYMIPCEKVSTLPAILKLGKGYKLSPEYTLKVSQAGKTLCLSGFMGM
 DIPPSGPLWILGDVFIGRYYTVFDRDNNRVGFAEAARL

Host: Mouse

Reactivity: Human

Quality Control Testing: Antibody Reactive Against Recombinant Protein.



Western Blot detection against Immunogen (71.43 KDa) .

Storage Buffer: 50 % glycerol

Storage Instruction: Store at -20°C or lower. Aliquot to avoid repeated freezing and thawing.

MSDS: [Download](#)

Datasheet: [Download](#)

Applications

Western Blot (Recombinant protein)

[Protocol Download](#)

ELISA

Gene Information

Application Image

Western Blot (Recombinant protein)

ELISA

Entrez GeneID: [1509](#)

GeneBank [BC016320](#)
Accession#:

Protein [AAH16320](#)
Accession#:

Gene Name: CTSD

Gene Alias: CLN10,CPSD,MGC2311

Gene [cathepsin D](#)
Description:

Omim ID: [116840](#), [610127](#)

Gene Ontology: [Hyperlink](#)

Gene Summary: This gene encodes a lysosomal aspartyl protease composed of a dimer of disulfide-linked heavy and light chains, both produced from a single protein precursor. This proteinase, which is a member of the peptidase C1 family, has a specificity similar to but narrower than that of pepsin A. Transcription of this gene is initiated from several sites, including one which is a start site for an estrogen-regulated transcript. Mutations in this gene are involved in the pathogenesis of several diseases, including breast cancer and possibly Alzheimer disease. [provided by RefSeq]

Other Designations: lysosomal aspartyl peptidase,lysosomal aspartyl protease

Gene Pathway

[Lysosome](#)

Related Disease

[Alzheimer Disease](#) [Alzheimer disease](#) [Breast Neoplasms](#) [Cardiovascular Diseases](#)
[Chronic Disease](#) [Cognition](#) [Cognition Disorders](#) [Creutzfeldt-Jakob Syndrome](#) [Dementia](#)
[Dementia, Multi-Infarct](#) [Depressive Disorder](#) [Diabetes Complications](#)
[Diabetes Mellitus, Type 2](#) [Edema](#) [Genetic Predisposition to Disease](#) [Memory](#)
[Mental Processes](#) [Metabolic Syndrome X](#) [Neoplasms](#)

... see more

[服務條款](#) | [隱私權政策](#) | [著作及商標](#) | [網站地圖](#)

©2016 亞諾法生技股份有限公司 Abnova Corporation. 版權所有.