



SZABO SCANDIC

Part of Europa Biosite

Produktinformation



Forschungsprodukte & Biochemikalien



Zellkultur & Verbrauchsmaterial



Diagnostik & molekulare Diagnostik



Laborgeräte & Service

Weitere Information auf den folgenden Seiten!
See the following pages for more information!



Lieferung & Zahlungsart

siehe unsere [Liefer- und Versandbedingungen](#)

Zuschläge

- Mindermengenzuschlag
- Trockeneiszuschlag
- Gefahrgutzuschlag
- Expressversand

SZABO-SCANDIC HandelsgmbH

Quellenstraße 110, A-1100 Wien

T. +43(0)1 489 3961-0

F. +43(0)1 489 3961-7

mail@szabo-scandic.com

www.szabo-scandic.com

[linkedin.com/company/szaboscandic](https://www.linkedin.com/company/szaboscandic) 

CTSD (Human) Matched Antibody Pair

Catalog # : H00001509-AP61

規格 : [1 Set]

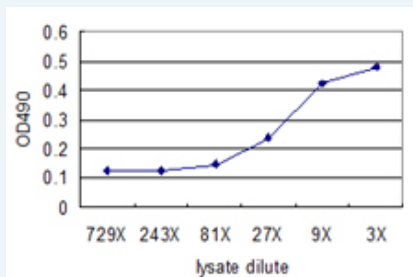
[List All](#)

Specification

Product Description: This antibody pair set comes with matched antibody pair to detect and quantify protein level of human CTSD.

Reactivity: Human

Quality Control Testing: Standard curve using CTSD 293T overexpression lysate (non-denatured) as an analyte.



Sandwich ELISA detection sensitivity ranging from approximately 27x to 3x dilution of the CTSD 293T overexpression lysate (non-denatured).

Supplied Product: Antibody pair set content:
 1. Capture antibody: mouse monoclonal anti-CTSD, IgG1 Kappa (100 ug)
 2. Detection antibody: rabbit MaxPab® affinity purified polyclonal anti-CTSD (50 ug)
 *Reagents are sufficient for at least 3-5 x 96 well plates using recommended protocols.

Storage Instruction: Store reagents of the antibody pair set at -20°C or lower. Please aliquot to avoid repeated freeze thaw cycle. Reagents should be returned to -20°C storage immediately after use.

MSDS:  [Download](#)

Applications

ELISA Pair (Transfected lysate)

 [Protocol Download](#)

Gene Information

Entrez GeneID: [1509](#)

Gene Name: CTSD

Gene Alias: CLN10,CPSD,MGC2311

Gene Description: cathepsin D

Omim ID: [116840](#), [610127](#)

Gene Ontology: [Hyperlink](#)

Application Image

ELISA Pair (Transfected lysate)

Gene Summary: This gene encodes a lysosomal aspartyl protease composed of a dimer of disulfide-linked heavy and light chains, both produced from a single protein precursor. This proteinase, which is a member of the peptidase C1 family, has a specificity similar to but narrower than that of pepsin A. Transcription of this gene is initiated from several sites, including one which is a start site for an estrogen-regulated transcript. Mutations in this gene are involved in the pathogenesis of several diseases, including breast cancer and possibly Alzheimer disease. [provided by RefSeq]

Other Designations: lysosomal aspartyl peptidase, lysosomal aspartyl protease

Gene Pathway

[Lysosome](#)

Related Disease

[Alzheimer Disease](#) [Alzheimer disease](#) [Breast Neoplasms](#) [Cardiovascular Diseases](#) [Chronic Disease](#) [Cognition](#) [Cognition Disorders](#) [Creutzfeldt-Jakob Syndrome](#) [Dementia](#) [Dementia, Multi-Infarct](#) [Depressive Disorder](#) [Diabetes Complications](#) [Diabetes Mellitus, Type 2](#) [Edema](#) [Genetic Predisposition to Disease](#) [Memory](#) [Mental Processes](#) [Metabolic Syndrome X](#) [Neoplasms](#)

... see more

[服務條款](#) | [隱私權政策](#) | [著作及商標](#) | [網站地圖](#)

©2016 亞諾法生技股份有限公司 Abnova Corporation. 版權所有.