



SZABO SCANDIC

Part of Europa Biosite

Produktinformation



Forschungsprodukte & Biochemikalien



Zellkultur & Verbrauchsmaterial



Diagnostik & molekulare Diagnostik



Laborgeräte & Service

Weitere Information auf den folgenden Seiten!
See the following pages for more information!



Lieferung & Zahlungsart

siehe unsere [Liefer- und Versandbedingungen](#)

Zuschläge

- Mindermengenzuschlag
- Trockeneiszuschlag
- Gefahrgutzuschlag
- Expressversand

SZABO-SCANDIC HandelsgmbH

Quellenstraße 110, A-1100 Wien

T. +43(0)1 489 3961-0

F. +43(0)1 489 3961-7

mail@szabo-scandic.com

www.szabo-scandic.com

[linkedin.com/company/szaboscandic](https://www.linkedin.com/company/szaboscandic) 

CTSD purified MaxPab rabbit polyclonal antibody (D01P) MaxPab®

Catalog # : H00001509-D01P

規格 : [100 ug]

List All

Specification

Product Description: Rabbit polyclonal antibody raised against a full-length human CTSD protein.

Immunogen: CTSD (AAH16320.1, 1 a.a. ~ 412 a.a) full-length human protein.

Sequence:
 MQPSSLLPLALCLLAAPASALVRIPLHKFTSIRRTMSEVGGSVEDLIAKGP
 VSKYSQAVPAVTEGPIPEVLKNYMDAQYYGEIGITPPQCFWVFDTGSS
 NLWVPSIHCKLLDIACWIHHKYNDSKSSTYVKNGTSFDIHYGSGLSGYLS
 QDTVSVPCQSASSASALGGVKVERQVFGEATKQPGITFIAAKFDGILGM
 AYPRISVNNVLPVFDNLMQQKLVQNIFFSYLSRDPDAQGGELMLGGT
 DSKYYKGSLSYLNVTRKAYWQVHLDQVEVASGLTLCKEGCEAMDTGTS
 LMVGPVDEVRELQKAIGAVPLIQGEYMIPCEKVSTLPAITLKLGGKGYKLS
 PEDYTLKVSQAGKTLCLSGFMGMDIPPPSGPLWILGDVFIGRYTVFDR
 DNNRVGFAEAARL

Host: Rabbit

Reactivity: Human, Mouse

Quality Control Testing: Antibody reactive against mammalian transfected lysate.

Storage Buffer: In 1x PBS, pH 7.4

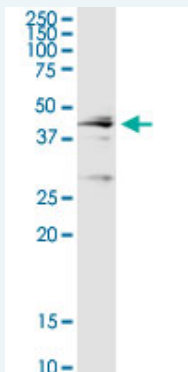
Storage Instruction: Store at -20°C or lower. Aliquot to avoid repeated freezing and thawing.

MSDS:  [Download](#)


Datasheet:  [Download](#)

Applications

Western Blot (Tissue lysate)



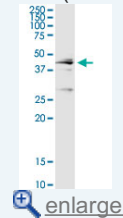
CTSD MaxPab rabbit polyclonal antibody. Western Blot analysis of CTSD expression in human kidney.

 [Protocol Download](#)

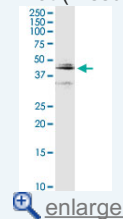
Western Blot (Tissue lysate)

Application Image

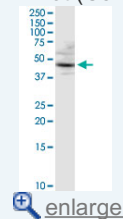
Western Blot (Tissue lysate)



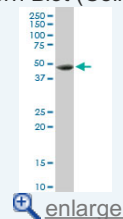
Western Blot (Tissue lysate)



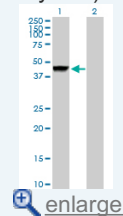
Western Blot (Cell lysate)

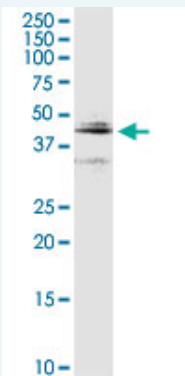


Western Blot (Cell lysate)



Western Blot (Transfected lysate)

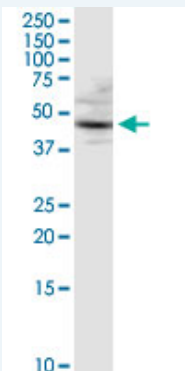




CTSD MaxPab rabbit polyclonal antibody. Western Blot analysis of CTSD expression in mouse brain.

 [Protocol Download](#)

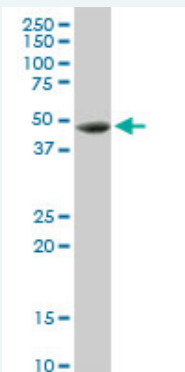
Western Blot (Cell lysate)



CTSD MaxPab rabbit polyclonal antibody. Western Blot analysis of CTSD expression in IMR-32.

 [Protocol Download](#)

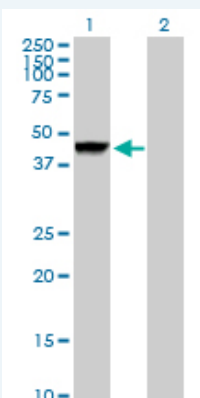
Western Blot (Cell lysate)



CTSD MaxPab rabbit polyclonal antibody. Western Blot analysis of CTSD expression in A-431.

 [Protocol Download](#)

Western Blot (Transfected lysate)



Western Blot analysis of CTSD expression in transfected 293T cell line (H00001509-T01) by CTSD MaxPab polyclonal antibody.

Lane 1: CTSD transfected lysate(44.60 KDa).
Lane 2: Non-transfected lysate.

 [Protocol Download](#)

Gene Information

Entrez GeneID: [1509](#)

**GeneBank
Accession#:** [NM_001909](#)

**Protein
Accession#:** [AAH16320.1](#)

Gene Name: CTSD

Gene Alias: CLN10,CPSD,MGC2311

**Gene
Description:** cathepsin D

Omim ID: [116840](#), [610127](#)

Gene Ontology: [Hyperlink](#)

Gene Summary: This gene encodes a lysosomal aspartyl protease composed of a dimer of disulfide-linked heavy and light chains, both produced from a single protein precursor. This proteinase, which is a member of the peptidase C1 family, has a specificity similar to but narrower than that of pepsin A. Transcription of this gene is initiated from several sites, including one which is a start site for an estrogen-regulated transcript. Mutations in this gene are involved in the pathogenesis of several diseases, including breast cancer and possibly Alzheimer disease. [provided by RefSeq]

**Other
Designations:** lysosomal aspartyl peptidase,lysosomal aspartyl protease

Gene Pathway

[Lysosome](#)

Related Disease

[Alzheimer Disease](#) [Alzheimer disease](#) [Breast Neoplasms](#) [Cardiovascular Diseases](#)
[Chronic Disease](#) [Cognition](#) [Cognition Disorders](#) [Creutzfeldt-Jakob Syndrome](#) [Dementia](#)
[Dementia, Multi-Infarct](#) [Depressive Disorder](#) [Diabetes Complications](#)
[Diabetes Mellitus, Type 2](#) [Edema](#) [Genetic Predisposition to Disease](#) [Memory](#)
[Mental Processes](#) [Metabolic Syndrome X](#) [Neoplasms](#)

... see more