



SZABO SCANDIC

Part of Europa Biosite

Produktinformation



Forschungsprodukte & Biochemikalien



Zellkultur & Verbrauchsmaterial



Diagnostik & molekulare Diagnostik



Laborgeräte & Service

Weitere Information auf den folgenden Seiten!
See the following pages for more information!



Lieferung & Zahlungsart

siehe unsere [Liefer- und Versandbedingungen](#)

Zuschläge

- Mindermengenzuschlag
- Trockeneiszuschlag
- Gefahrgutzuschlag
- Expressversand

SZABO-SCANDIC HandelsgmbH

Quellenstraße 110, A-1100 Wien

T. +43(0)1 489 3961-0

F. +43(0)1 489 3961-7

mail@szabo-scandic.com

www.szabo-scandic.com

[linkedin.com/company/szaboscandic](https://www.linkedin.com/company/szaboscandic) 

CTSD 293T Cell Transient Overexpression Lysate(Denatured)

Catalog # : H00001509-T01

規格 : [100 uL]

List All

Specification

Transfected Cell Line: 293T

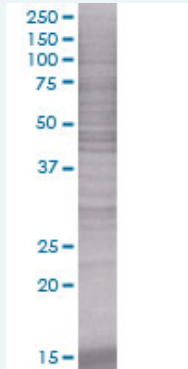
Plasmid: pCMV-CTSD full-length

Host: Human

Theoretical MW (kDa): 44.6

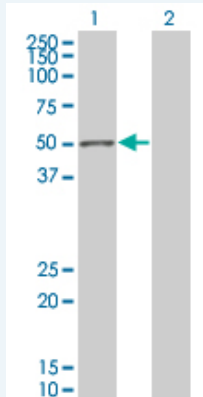
Quality Control Testing: Transient overexpression cell lysate was tested with Anti-CTSD antibody ([H00001509-B01](#)) by Western Blots.

SDS-PAGE Gel



CTSD transfected lysate

Western Blot



Lane 1: CTSD transfected lysate (44.6 KDa).

Lane 2: Non-transfected lysate.

Storage Buffer: 1X Sample Buffer (50 mM Tris-HCl, 2% SDS, 10% glycerol, 300 mM 2-mercaptoethanol, 0.01% Bromophenol blue)

Storage Instruction: Store at -80°C. Aliquot to avoid repeated freezing and thawing.

MSDS:  [Download](#)

Applications

Western Blot

Gene Information

Entrez GeneID: [1509](#)

GeneBank Accession#: [NM_001909](#)

Protein Accession#: [NP_001900](#)

Gene Name: CTSD

Gene Alias: CLN10,CPSD,MGC2311

Gene Description: cathepsin D

Omim ID: [116840](#), [610127](#)

Gene Ontology: [Hyperlink](#)

Gene Summary: This gene encodes a lysosomal aspartyl protease composed of a dimer of disulfide-linked heavy and light chains, both produced from a single protein precursor. This proteinase, which is a member of the peptidase C1 family, has a specificity similar to but narrower than that of pepsin A. Transcription of this gene is initiated from several sites, including one which is a start site for an estrogen-regulated transcript. Mutations in this gene are involved in the pathogenesis of several diseases, including breast cancer and possibly Alzheimer disease. [provided by RefSeq]

Other Designations: lysosomal aspartyl peptidase,lysosomal aspartyl protease

Gene Pathway

[Lysosome](#)

Related Disease

[Alzheimer Disease](#) [Alzheimer disease](#) [Breast Neoplasms](#) [Cardiovascular Diseases](#) [Chronic Disease](#) [Cognition](#) [Cognition Disorders](#) [Creutzfeldt-Jakob Syndrome](#) [Dementia](#) [Dementia, Multi-Infarct](#) [Depressive Disorder](#) [Diabetes Complications](#) [Diabetes Mellitus, Type 2](#) [Edema](#) [Genetic Predisposition to Disease](#) [Memory](#) [Mental Processes](#) [Metabolic Syndrome X](#) [Neoplasms](#)

... see more