



SZABO SCANDIC

Part of Europa Biosite

Produktinformation



Forschungsprodukte & Biochemikalien



Zellkultur & Verbrauchsmaterial



Diagnostik & molekulare Diagnostik



Laborgeräte & Service

Weitere Information auf den folgenden Seiten!
See the following pages for more information!



Lieferung & Zahlungsart

siehe unsere [Liefer- und Versandbedingungen](#)

Zuschläge

- Mindermengenzuschlag
- Trockeneiszuschlag
- Gefahrgutzuschlag
- Expressversand

SZABO-SCANDIC HandelsgmbH

Quellenstraße 110, A-1100 Wien

T. +43(0)1 489 3961-0

F. +43(0)1 489 3961-7

mail@szabo-scandic.com

www.szabo-scandic.com

[linkedin.com/company/szaboscandic](https://www.linkedin.com/company/szaboscandic) 

CTSE MaxPab mouse polyclonal antibody (B01) MaxPab®

Catalog # : H00001510-B01

規格 : [50 uL]

[List All](#)

Specification

Product Description: Mouse polyclonal antibody raised against a full-length human CTSE protein.

Immunogen: CTSE (AAH42537, 18 a.a. ~ 396 a.a) full-length human protein.

Sequence:
 QGSLHRVPLRRHPTLKKKLRRARSQLSEFWKSHNLDMIQFTESCSMDQS
 AKEPLINYLDMEYFGTISIGSPPQNFTVIFDTGSSNLWVPSVYCTSPACKT
 HSRFQPSQSSTYSQPGQSFISIYGTGSLSGIIGADQVSVEGLTVVGQQF
 GESVTEPGQTLVDAEFDGILGLGYPSLAVGGVTPVFDNMMAQNLVDLP
 MFSVYMSSNPEGGAGSELIFGGYDHSFSGSLNWWPVTKQAYWQIALD
 NIQVGGTVMFCSEGCQAIVDTGTLITGPSDKIKQLQNAIGAAPVDGEYA
 VECANLNVMPDVTFTINGVPYTLSPYATLLDFVDGMQFCSSGFQGLDI
 HPPAGPLWILGDVFIHQFYVDFDRGNRNVGLAPAVP

Host: Mouse

Reactivity: Human

Quality Control Testing: Antibody reactive against mammalian transfected lysate.

Storage Buffer: No additive

Storage Instruction: Store at -20°C or lower. Aliquot to avoid repeated freezing and thawing.

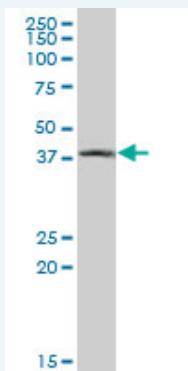
Note: For IHC and IF applications, antibody purification with Protein A will be needed prior to use.

MSDS:  [Download](#)


Datasheet:  [Download](#)

Applications

Western Blot (Tissue lysate)

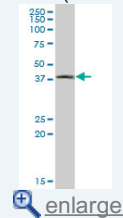


CTSE MaxPab polyclonal antibody. Western Blot analysis of CTSE expression in human stomach.

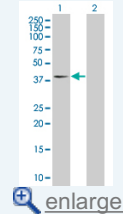
 [Protocol Download](#)

Application Image

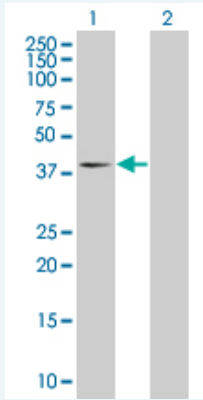
Western Blot (Tissue lysate)



Western Blot (Transfected lysate)




Western Blot (Transfected lysate)



Western Blot analysis of CTSE expression in transfected 293T cell line ([H00001510-T01](#)) by CTSE MaxPab polyclonal antibody.

Lane 1: CTSE transfected lysate(43.67 KDa).

Lane 2: Non-transfected lysate.

 [Protocol Download](#)

Gene Information

Entrez GeneID: [1510](#)

GeneBank [BC042537](#)

Accession#:

Protein [AAH42537](#)

Accession#:

Gene Name: CTSE

Gene Alias: CATE

Gene [cathepsin E](#)

Description:

Omim ID: [116890](#)

Gene Ontology: [Hyperlink](#)

Gene Summary: The protein encoded by this gene is a gastric aspartyl protease that functions as a disulfide-linked homodimer. This protease, which is a member of the peptidase C1 family, has a specificity similar to that of pepsin A and cathepsin D. It is an intracellular proteinase that does not appear to be involved in the digestion of dietary protein and is found in highest concentration in the surface of epithelial mucus-producing cells of the stomach. It is the first aspartic proteinase expressed in the fetal stomach and is found in more than half of gastric cancers. It appears, therefore, to be an oncofetal antigen. Transcript variants utilizing alternative polyadenylation signals and two transcript variants encoding different isoforms exist for this gene. [provided by RefSeq]

Other [OTTHUMP00000034345,OTTHUMP00000034346,erythrocyte](#)

Designations: [membrane aspartic proteinase,slow-moving proteinase](#)

Gene Pathway

[Lysosome](#)