



# SZABO SCANDIC

Part of Europa Biosite

## Produktinformation



Forschungsprodukte & Biochemikalien



Zellkultur & Verbrauchsmaterial



Diagnostik & molekulare Diagnostik



Laborgeräte & Service

Weitere Information auf den folgenden Seiten!  
See the following pages for more information!



### Lieferung & Zahlungsart

siehe unsere [Liefer- und Versandbedingungen](#)

### Zuschläge

- Mindermengenzuschlag
- Trockeneiszuschlag
- Gefahrgutzuschlag
- Expressversand

### SZABO-SCANDIC HandelsgmbH

Quellenstraße 110, A-1100 Wien

T. +43(0)1 489 3961-0

F. +43(0)1 489 3961-7

[mail@szabo-scandic.com](mailto:mail@szabo-scandic.com)

[www.szabo-scandic.com](http://www.szabo-scandic.com)

[linkedin.com/company/szaboscandic](https://www.linkedin.com/company/szaboscandic) 

## CTSE purified MaxPab mouse polyclonal antibody (B01P) MaxPab®

Catalog # : H00001510-B01P

規格 : [ 50 ug ]

List All

### Specification

**Product Description:** Mouse polyclonal antibody raised against a full-length human CTSE protein.

**Immunogen:** CTSE (AAH42537, 18 a.a. ~ 396 a.a) full-length human protein.

**Sequence:**  
 QGSLHRVPLRRHPTLKKKLRRSQLSEFWKSHNLDMIQFTESCSMDQS  
 AKEPLINYLDMEYFGTISIGSPPQNFTVIFDTGSSNLWVPSVYCTSPACKT  
 HSRFQPSQSSTYSQPGQSFISIYGTGSLSGIIGADQVSVEGLTVVGQQF  
 GESVTEPGQTLVDAEFDGILGLGYPSLAVGGVTPVFDNMMAQNLVDLP  
 MFSVYMSSNPEGGAGSELIFGGYDHSFSGSLNWWPVTKQAYWQIALD  
 NIQVGGTVMFCSEGCQAIVDTGTLITGPSDKIKQLQNAIGAAPVDGEYA  
 VECANLNVMPDVTFTINGVPYTLSPYATLLDFVDGMQFCSSGFQGLDI  
 HPPAGPLWILGDVFIHQFYVFDNRGNNRVGLAPAVP

**Host:** Mouse

**Reactivity:** Human

**Quality Control Testing:** Antibody reactive against mammalian transfected lysate.

**Storage Buffer:** In 1x PBS, pH 7.4

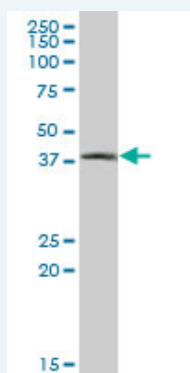
**Storage Instruction:** Store at -20°C or lower. Aliquot to avoid repeated freezing and thawing.

**MSDS:**  [Download](#)

**Datasheet:**  [Download](#)

### Applications

#### Western Blot (Tissue lysate)



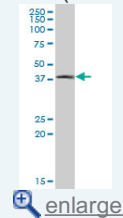
CTSE MaxPab polyclonal antibody. Western Blot analysis of CTSE expression in human stomach.

 [Protocol Download](#)

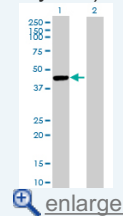
#### Western Blot (Transfected lysate)

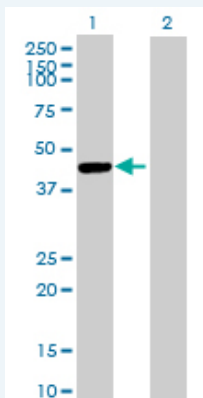
### Application Image

#### Western Blot (Tissue lysate)



#### Western Blot (Transfected lysate)






Western Blot analysis of CTSE expression in transfected 293T cell line (H00001510-T01) by CTSE MaxPab polyclonal antibody.

Lane 1: CTSE transfected lysate(43.67 KDa).

Lane 2: Non-transfected lysate.

 [Protocol Download](#)

## Gene Information

**Entrez GeneID:** [1510](#)

**GeneBank** [BC042537](#)

**Accession#:**

**Protein** =

**Accession#:**

**Gene Name:** CTSE

**Gene Alias:** CATE

**Gene** cathepsin E

**Description:**

**Omim ID:** [116890](#)

**Gene Ontology:** [Hyperlink](#)

**Gene Summary:** The protein encoded by this gene is a gastric aspartyl protease that functions as a disulfide-linked homodimer. This protease, which is a member of the peptidase C1 family, has a specificity similar to that of pepsin A and cathepsin D. It is an intracellular proteinase that does not appear to be involved in the digestion of dietary protein and is found in highest concentration in the surface of epithelial mucus-producing cells of the stomach. It is the first aspartic proteinase expressed in the fetal stomach and is found in more than half of gastric cancers. It appears, therefore, to be an oncofetal antigen. Transcript variants utilizing alternative polyadenylation signals and two transcript variants encoding different isoforms exist for this gene. [provided by RefSeq]

**Other** OTTHUMP00000034345,OTTHUMP00000034346,erythrocyte

**Designations:** membrane aspartic proteinase,slow-moving proteinase

## Gene Pathway

[Lysosome](#)