



# SZABO SCANDIC

Part of Europa Biosite

## Produktinformation



Forschungsprodukte & Biochemikalien



Zellkultur & Verbrauchsmaterial



Diagnostik & molekulare Diagnostik



Laborgeräte & Service

Weitere Information auf den folgenden Seiten!  
See the following pages for more information!



### Lieferung & Zahlungsart

siehe unsere [Liefer- und Versandbedingungen](#)

### Zuschläge

- Mindermengenzuschlag
- Trockeneiszuschlag
- Gefahrgutzuschlag
- Expressversand

### SZABO-SCANDIC HandelsgmbH

Quellenstraße 110, A-1100 Wien

T. +43(0)1 489 3961-0

F. +43(0)1 489 3961-7

[mail@szabo-scandic.com](mailto:mail@szabo-scandic.com)

[www.szabo-scandic.com](http://www.szabo-scandic.com)

[linkedin.com/company/szaboscandic](https://www.linkedin.com/company/szaboscandic) 



**CTSG purified MaxPab rabbit polyclonal antibody (D01P)** MaxPab®

Catalog # : H00001511-D01P

規格 : [ 100 ug ]

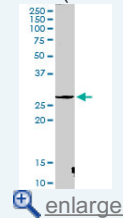
List All

**Specification**

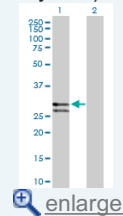
<b>Product Description:</b>	Rabbit polyclonal antibody raised against a full-length human CTSG protein.
<b>Immunogen:</b>	CTSG (NP_001902.1, 1 a.a. ~ 255 a.a) full-length human protein.
<b>Sequence:</b>	MQPLLLLLAFLLPTGAEAGEIIGGRESRPHSRPYMAYLQIQSPAGQSRCG GFLVREDFVLTAAHCWGSNINVTLGAHNIQRRENTQQHITARRAIRHPQY NQRTIQNDIMLLQLSRRVRRNRNPNVALPRAQEGLRPGTLCTVAGWG RVSMRRGDTLREVQLRVQRDRQLRIFGSYDPRRQICVGDRRERKAA FKGDSGGPLLNNVAHGIVSYGKSSGVPPEVFRVSSFLPWRTTMRSF KLLDQMETPL
<b>Host:</b>	Rabbit
<b>Reactivity:</b>	Human, Mouse
<b>Quality Control Testing:</b>	Antibody reactive against mammalian transfected lysate.
<b>Storage Buffer:</b>	In 1x PBS, pH 7.4
<b>Storage Instruction:</b>	Store at -20°C or lower. Aliquot to avoid repeated freezing and thawing.
<b>MSDS:</b>	 <a href="#">Download</a>
<b>Datasheet:</b>	 <a href="#">Download</a>

**Application Image**

Western Blot (Tissue lysate)

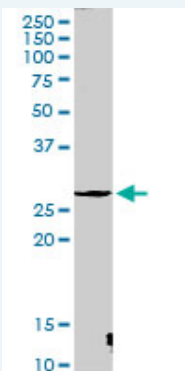


Western Blot (Transfected lysate)



**Applications**

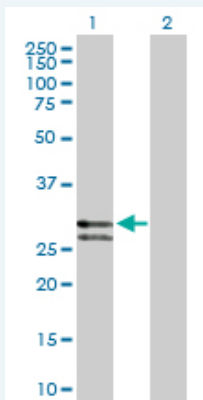
Western Blot (Tissue lysate)



CTSG MaxPab rabbit polyclonal antibody. Western Blot analysis of CTSG expression in mouse liver.

 [Protocol Download](#)

Western Blot (Transfected lysate)



Western Blot analysis of CTSG expression in transfected 293T cell line ([H00001511-T01](#)) by CTSG MaxPab polyclonal antibody.

Lane 1: CTSG transfected lysate(28.80 KDa).  
Lane 2: Non-transfected lysate.

 [Protocol Download](#)

## Gene Information

**Entrez GeneID:** [1511](#)

**GeneBank** [NM\\_001911.2](#)

**Accession#:**

**Protein** [NP\\_001902.1](#)

**Accession#:**

**Gene Name:** CTSG

**Gene Alias:** CG,MGC23078

**Gene** cathepsin G

**Description:**

**Omim ID:** [116830](#)

**Gene Ontology:** [Hyperlink](#)

**Gene Summary:** The protein encoded by this gene, a member of the peptidase S1 protein family, is found in azurophilic granules of neutrophilic polymorphonuclear leukocytes. The encoded protease has a specificity similar to that of chymotrypsin C, and may participate in the killing and digestion of engulfed pathogens, and in connective tissue remodeling at sites of inflammation. Transcript variants utilizing alternative polyadenylation signals exist for this gene. [provided by RefSeq]

**Other** -

**Designations:**

## Gene Pathway

[Lysosome](#) [Neuroactive ligand-receptor interaction](#) [Renin-angiotensin system](#)  
[Systemic lupus erythematosus](#)

## Related Disease

[Alzheimer Disease](#) [Alzheimer disease](#) [Brain Infarction](#) [Cardiovascular Diseases](#)  
[Diabetes Mellitus, Type 2](#) [Edema](#) [Genetic Predisposition to Disease](#) [HIV Infections](#)  
[Kidney Failure, Chronic](#) [Metabolic Syndrome X](#) [Myocardial Infarction](#)  
[Renal Insufficiency](#) [Chronic Sepsis](#) [Werner syndrome](#)

