



SZABO SCANDIC

Part of Europa Biosite

Produktinformation



Forschungsprodukte & Biochemikalien



Zellkultur & Verbrauchsmaterial



Diagnostik & molekulare Diagnostik



Laborgeräte & Service

Weitere Information auf den folgenden Seiten!
See the following pages for more information!



Lieferung & Zahlungsart

siehe unsere [Liefer- und Versandbedingungen](#)

Zuschläge

- Mindermengenzuschlag
- Trockeneiszuschlag
- Gefahrgutzuschlag
- Expressversand

SZABO-SCANDIC HandelsgmbH

Quellenstraße 110, A-1100 Wien

T. +43(0)1 489 3961-0

F. +43(0)1 489 3961-7

mail@szabo-scandic.com

www.szabo-scandic.com

[linkedin.com/company/szaboscandic](https://www.linkedin.com/company/szaboscandic) 

CTSG (Human) IP-WB Antibody Pair

Catalog # : H00001511-PW2

規格 : [1 Set]

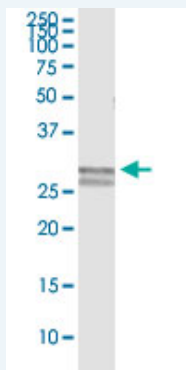
List All

Specification

Product Description: This IP-WB antibody pair set comes with one antibody for immunoprecipitation and another to detect the precipitated protein in western blot.

Reactivity: Human

Quality Control Testing: Immunoprecipitation-Western Blot (IP-WB)



Immunoprecipitation of CTSG transfected lysate using rabbit polyclonal anti-CTSG and Protein A Magnetic Bead (U0007), and immunoblotted with mouse purified polyclonal anti-CTSG.

Supplied Product: Antibody pair set content:
1. Antibody pair for IP: rabbit polyclonal anti-CTSG (300 ul)
2. Antibody pair for WB: mouse purified polyclonal anti-CTSG (50 ug)

Storage Instruction: Store reagents of the antibody pair set at -20°C or lower. Please aliquot to avoid repeated freeze thaw cycle. Reagents should be returned to -20°C storage immediately after use.

Applications

Immunoprecipitation-Western Blot

 [Protocol Download](#)

Gene Information

Entrez GeneID: [1511](#)

Gene Name: CTSG

Gene Alias: CG,MGC23078

Gene Description: cathepsin G

Omim ID: [116830](#)

Gene Ontology: [Hyperlink](#)

Gene Summary: The protein encoded by this gene, a member of the peptidase S1

protein family, is found in azurophil granules of neutrophilic polymorphonuclear leukocytes. The encoded protease has a specificity similar to that of chymotrypsin C, and may participate in the killing and digestion of engulfed pathogens, and in connective tissue remodeling at sites of inflammation. Transcript variants utilizing alternative polyadenylation signals exist for this gene. [provided by RefSeq

Other Designations: -

Gene Pathway

[Lysosome](#) [Neuroactive ligand-receptor interaction](#) [Renin-angiotensin system](#)
[Systemic lupus erythematosus](#)

Related Disease

[Alzheimer Disease](#) [Alzheimer disease](#) [Brain Infarction](#) [Cardiovascular Diseases](#)
[Diabetes Mellitus, Type 2](#) [Edema](#) [Genetic Predisposition to Disease](#) [HIV Infections](#)
[Kidney Failure, Chronic](#) [Metabolic Syndrome X](#) [Myocardial Infarction](#)
[Renal Insufficiency, Chronic](#) [Sepsis](#) [Werner syndrome](#)

[服務條款](#) | [隱私權政策](#) | [著作及商標](#) | [網站地圖](#)

©2016 亞諾法生技股份有限公司 Abnova Corporation. 版權所有.