



# SZABO SCANDIC

Part of Europa Biosite

## Produktinformation



Forschungsprodukte & Biochemikalien



Zellkultur & Verbrauchsmaterial



Diagnostik & molekulare Diagnostik



Laborgeräte & Service

Weitere Information auf den folgenden Seiten!  
See the following pages for more information!



### Lieferung & Zahlungsart

siehe unsere [Liefer- und Versandbedingungen](#)

### Zuschläge

- Mindermengenzuschlag
- Trockeneiszuschlag
- Gefahrgutzuschlag
- Expressversand

### SZABO-SCANDIC HandelsgmbH

Quellenstraße 110, A-1100 Wien

T. +43(0)1 489 3961-0

F. +43(0)1 489 3961-7

[mail@szabo-scandic.com](mailto:mail@szabo-scandic.com)

[www.szabo-scandic.com](http://www.szabo-scandic.com)

[linkedin.com/company/szaboscandic](https://www.linkedin.com/company/szaboscandic) 

## CTSG 293T Cell Transient Overexpression Lysate(Denatured)

Catalog # : H00001511-T01

規格 : [ 100 uL ]

[List All](#)

### Specification

**Transfected Cell Line:** 293T

**Plasmid:** pCMV-CTSG full-length

**Host:** Human

**Theoretical MW (kDa):** 28.16

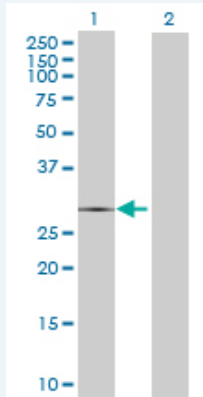
**Quality Control Testing:** Transient overexpression cell lysate was tested with Anti-CTSG antibody (H00001511-B01) by Western Blots.

#### SDS-PAGE Gel



CTSG transfected lysate.

#### Western Blot



Lane 1: CTSG transfected lysate ( 28.16 KDa)

Lane 2: Non-transfected lysate.

**Storage Buffer:** 1X Sample Buffer (50 mM Tris-HCl, 2% SDS, 10% glycerol, 300 mM 2-mercaptoethanol, 0.01% Bromophenol blue)

**Storage Instruction:** Store at -80°C. Aliquot to avoid repeated freezing and thawing.

**MSDS:**  [Download](#)

### Applications

## Western Blot

### Gene Information

Entrez GeneID: [1511](#)

GeneBank Accession#: [NM\\_001911.2](#)

Protein Accession#: [NP\\_001902.1](#)

Gene Name: CTSG

Gene Alias: CG,MGC23078

Gene Description: cathepsin G

Omim ID: [116830](#)

Gene Ontology: [Hyperlink](#)

**Gene Summary:** The protein encoded by this gene, a member of the peptidase S1 protein family, is found in azurophil granules of neutrophilic polymorphonuclear leukocytes. The encoded protease has a specificity similar to that of chymotrypsin C, and may participate in the killing and digestion of engulfed pathogens, and in connective tissue remodeling at sites of inflammation. Transcript variants utilizing alternative polyadenylation signals exist for this gene. [provided by RefSeq]

Other Designations: -

### Gene Pathway

[Lysosome](#) [Neuroactive ligand-receptor interaction](#) [Renin-angiotensin system](#)  
[Systemic lupus erythematosus](#)

### Related Disease

[Alzheimer Disease](#) [Alzheimer disease](#) [Brain Infarction](#) [Cardiovascular Diseases](#)  
[Diabetes Mellitus, Type 2](#) [Edema](#) [Genetic Predisposition to Disease](#) [HIV Infections](#)  
[Kidney Failure, Chronic](#) [Metabolic Syndrome X](#) [Myocardial Infarction](#)  
[Renal Insufficiency, Chronic](#) [Sepsis](#) [Werner syndrome](#)

[服務條款](#) | [隱私權政策](#) | [著作及商標](#) | [網站地圖](#)

©2016 亞諾法生技股份有限公司 Abnova Corporation. 版權所有.