



SZABO SCANDIC

Part of Europa Biosite

Produktinformation



Forschungsprodukte & Biochemikalien



Zellkultur & Verbrauchsmaterial



Diagnostik & molekulare Diagnostik



Laborgeräte & Service

Weitere Information auf den folgenden Seiten!
See the following pages for more information!



Lieferung & Zahlungsart

siehe unsere [Liefer- und Versandbedingungen](#)

Zuschläge

- Mindermengenzuschlag
- Trockeneiszuschlag
- Gefahrgutzuschlag
- Expressversand

SZABO-SCANDIC HandelsgmbH

Quellenstraße 110, A-1100 Wien

T. +43(0)1 489 3961-0

F. +43(0)1 489 3961-7

mail@szabo-scandic.com

www.szabo-scandic.com

[linkedin.com/company/szaboscandic](https://www.linkedin.com/company/szaboscandic) 

CTSH purified MaxPab mouse polyclonal antibody (B01P) MaxPab®

Catalog # : H00001512-B01P

規格 : [50 ug]

[List All](#)

Specification

Product Description: Mouse polyclonal antibody raised against a full-length human CTSH protein.

Immunogen: CTSH (AAH02479, 1 a.a. ~ 335 a.a) full-length human protein.

Sequence:
 MWATLPLL CAGAWLLGVPVCGAAELSVNSLEKFFHKSWMSKHRKTYST
 EEYHRLQTFASNWRKINAHNNGNHTFKMALNQFSDMSFAEIKHKYLWS
 EPQNCSATKSNYLRGTGPYPPSVDWRKKGNFVSPVKNQGACGSCWTF
 STTGALESAIAIATGKMLSLAEQQLVDCAQDFNNHGCQGGGLPSQAFEYIL
 YNKGIMGEDTYPYQGKDG YCKFQPGKAIGFVKD VANITYDEEAMVEAVA
 LYNPVSF AFEVTQDFMMYRTGIYSSTSCHKTPDKVNHAVLAVGYGEKNGI
 PYWIVKNSWGPQWGMNGYFLIERGKNMCGLAACASYPIPLV

Host: Mouse

Reactivity: Human

Quality Control Testing: Antibody reactive against mammalian transfected lysate.

Storage Buffer: In 1x PBS, pH 7.4

Storage Instruction: Store at -20°C or lower. Aliquot to avoid repeated freezing and thawing.

MSDS: [Download](#)

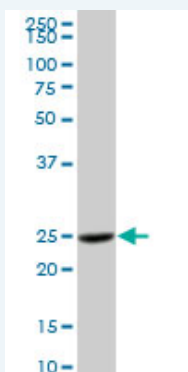
Datasheet: [Download](#)

Publication Reference

1. The Expression and Activity of Cathepsins D, H and K in Asthmatic Airways. Faiz A, Tjin G, Harkness L, Weckmann M, Bao S, Black JL, Oliver BG, Burgess JK. *PLoS One*. 2013;8(3):e57245. doi: 10.1371/journal.pone.0057245

Applications

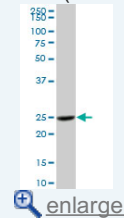
Western Blot (Tissue lysate)



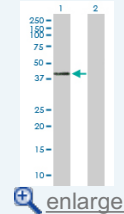
CTSH MaxPab polyclonal antibody. Western Blot analysis of CTSH expression in human placenta.

Application Image

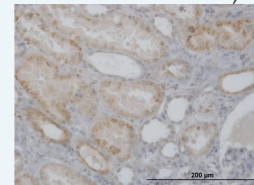
Western Blot (Tissue lysate)



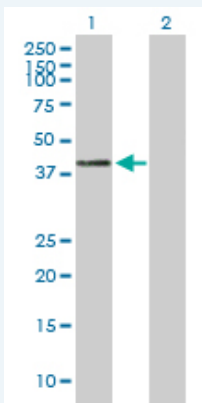
Western Blot (Transfected lysate)



Immunohistochemistry (Formalin/PFA-fixed paraffin-embedded sections)



Western Blot (Transfected lysate)

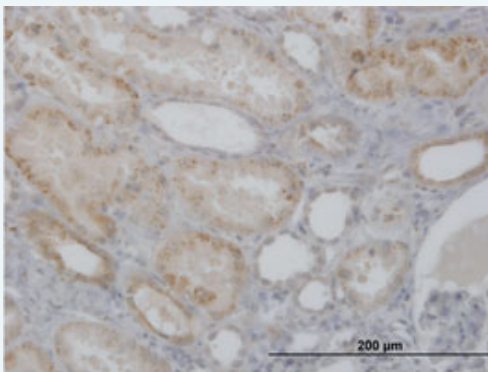



Western Blot analysis of CTSH expression in transfected 293T cell line ([H00001512-T01](#)) by CTSH MaxPab polyclonal antibody.

Lane 1: CTSH transfected lysate(36.96 KDa).

Lane 2: Non-transfected lysate.

Immunohistochemistry (Formalin/PFA-fixed paraffin-embedded sections)



 enlarge this image

Immunoperoxidase of purified MaxPab antibody to CTSH on formalin-fixed paraffin-embedded human kidney. [antibody concentration 3 ug/ml]

Gene Information

Entrez GeneID: [1512](#)

GeneBank [BC002479](#)
Accession#:

Protein [AAH02479](#)
Accession#:

Gene Name: CTSH

Gene Alias: ACC-4,ACC-5,CPSB,DKFZp686B24257,MGC1519,minichain

Gene Description: cathepsin H

Omim ID: [116820](#)

Gene Ontology: [Hyperlink](#)

Gene Summary: The protein encoded by this gene is a lysosomal cysteine proteinase important in the overall degradation of lysosomal proteins. It is composed of a dimer of disulfide-linked heavy and light chains, both produced from a single protein precursor. The encoded protein, which

belongs to the peptidase C1 protein family, can act both as an aminopeptidase and as an endopeptidase. Increased expression of this gene has been correlated with malignant progression of prostate tumors. Two transcript variants encoding different isoforms have been found for this gene. [provided by RefSeq]

Other Designations: N-benzoylarginine-beta-naphthylamide hydrolase,aleurain,cathepsin B3,cathepsin BA

Gene Pathway

[Lysosome](#)

Related Disease

[Alzheimer Disease](#) [Alzheimer disease](#) [Carcinoma](#) [Cardiovascular Diseases](#) [Celiac Disease](#) [Cognition](#) [Diabetes Mellitus, Type 1](#) [Diabetes Mellitus, Type 2](#) [Edema](#) [Genetic Predisposition to Disease](#) [Lung Neoplasms](#) [Prostatic Neoplasms](#) [Pulmonary Disease, Chronic Obstructive](#) [Urinary Bladder Neoplasms](#) [Werner syndrome](#)

[服務條款](#) | [隱私權政策](#) | [著作及商標](#) | [網站地圖](#)

©2016 亞諾法生技股份有限公司 Abnova Corporation. 版權所有.