



SZABO SCANDIC

Part of Europa Biosite

Produktinformation



Forschungsprodukte & Biochemikalien



Zellkultur & Verbrauchsmaterial



Diagnostik & molekulare Diagnostik



Laborgeräte & Service

Weitere Information auf den folgenden Seiten!
See the following pages for more information!



Lieferung & Zahlungsart

siehe unsere [Liefer- und Versandbedingungen](#)

Zuschläge

- Mindermengenzuschlag
- Trockeneiszuschlag
- Gefahrgutzuschlag
- Expressversand

SZABO-SCANDIC HandelsgmbH

Quellenstraße 110, A-1100 Wien

T. +43(0)1 489 3961-0

F. +43(0)1 489 3961-7

mail@szabo-scandic.com

www.szabo-scandic.com

[linkedin.com/company/szaboscandic](https://www.linkedin.com/company/szaboscandic) 

CTSH MaxPab mouse polyclonal antibody (B02) MaxPab®

Catalog # : H00001512-B02

規格 : [50 uL]

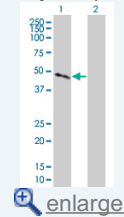
[List All](#)

Specification

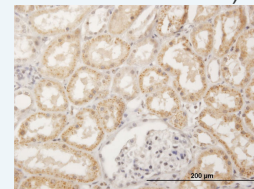
Product Description:	Mouse polyclonal antibody raised against a full-length human CTSH protein.
Immunogen:	CTSH (NP_004381.2, 1 a.a. ~ 335 a.a) full-length human protein.
Sequence:	MWATLPLL CAGAWLLGVPVCGAAELCVNSLEKFHFKSWMSKHRKTYST EEYHRLQTFASNWRKINAHNNGNHTFKMALNQFSDMSFAEIKHKYLWS EPQNC SATKSNYLRGTGPYPPSVDWRKKGNFVSPVKNQGACGSCWTF STTGALES AIAIATGKMLSLAEQQLV DCAQDFNNHGCQGG LPSQAF EYIL YNK GIMG EDTYPYQ GKDG YCKFQPGKAIGFVKD VANITYDEEAMVEAVA LYNPVSFAFEVTQDFMMYRTGIYSST SCHKTPDKVNHAVLAVGYGEKNGI PYWIVKNSWGPQWGMNGYFLIERGKNMCGLAACASYPIPLV
Host:	Mouse
Reactivity:	Human
Quality Control Testing:	Antibody reactive against mammalian transfected lysate.
Storage Buffer:	No additive
Storage Instruction:	Store at -20°C or lower. Aliquot to avoid repeated freezing and thawing.
Note:	For IHC and IF applications, antibody purification with Protein A will be needed prior to use.
MSDS:	Download
Datasheet:	Download

Application Image

Western Blot (Transfected lysate)

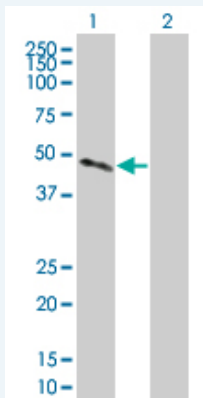


Immunohistochemistry (Formalin/PFA-fixed paraffin-embedded sections)



Applications

Western Blot (Transfected lysate)

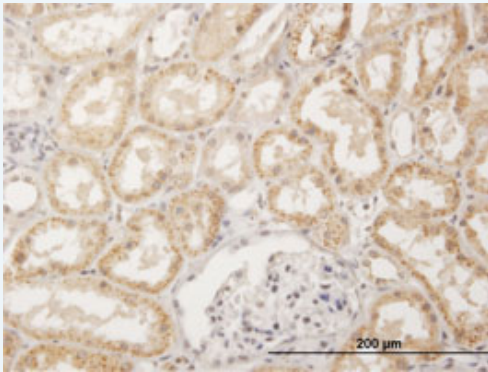


Western Blot analysis of CTSH expression in transfected 293T cell line (H00001512-T02) by CTSH MaxPab polyclonal antibody.

Lane 1: CTSH transfected lysate(36.85 KDa).

Lane 2: Non-transfected lysate.

Immunohistochemistry (Formalin/PFA-fixed paraffin-embedded sections)



 enlarge this image

Immunoperoxidase of purified MaxPab antibody to CTSH on formalin-fixed paraffin-embedded human kidney. [antibody concentration 3 ug/ml]

Gene Information

Entrez GeneID: [1512](#)

GeneBank Accession#: [NM_004390.2](#)

Protein Accession#: [NP_004381.2](#)

Gene Name: CTSH

Gene Alias: ACC-4,ACC-5,CPSB,DKFZp686B24257,MGC1519,minichain

Gene Description: cathepsin H

Omim ID: [116820](#)

Gene Ontology: [Hyperlink](#)

Gene Summary: The protein encoded by this gene is a lysosomal cysteine proteinase important in the overall degradation of lysosomal proteins. It is composed of a dimer of disulfide-linked heavy and light chains, both produced from a single protein precursor. The encoded protein, which belongs to the peptidase C1 protein family, can act both as an aminopeptidase and as an endopeptidase. Increased expression of this gene has been correlated with malignant progression of prostate tumors. Two transcript variants encoding different isoforms have been found for this gene. [provided by RefSeq]

Other Designations: N-benzoylarginine-beta-naphthylamide hydrolase,aleurain,cathepsin B3,cathepsin BA

Gene Pathway

[Lysosome](#)

Related Disease

[Alzheimer Disease](#) [Alzheimer disease](#) [Carcinoma](#) [Cardiovascular Diseases](#) [Celiac Disease](#) [Cognition](#) [Diabetes Mellitus, Type 1](#) [Diabetes Mellitus, Type 2](#) [Edema](#) [Genetic Predisposition to Disease](#) [Lung Neoplasms](#) [Prostatic Neoplasms](#) [Pulmonary Disease, Chronic Obstructive](#) [Urinary Bladder Neoplasms](#) [Werner syndrome](#)

