



# SZABO SCANDIC

Part of Europa Biosite

## Produktinformation



Forschungsprodukte & Biochemikalien



Zellkultur & Verbrauchsmaterial



Diagnostik & molekulare Diagnostik



Laborgeräte & Service

Weitere Information auf den folgenden Seiten!  
See the following pages for more information!



### Lieferung & Zahlungsart

siehe unsere [Liefer- und Versandbedingungen](#)

### Zuschläge

- Mindermengenzuschlag
- Trockeneiszuschlag
- Gefahrgutzuschlag
- Expressversand

### SZABO-SCANDIC HandelsgmbH

Quellenstraße 110, A-1100 Wien

T. +43(0)1 489 3961-0

F. +43(0)1 489 3961-7

[mail@szabo-scandic.com](mailto:mail@szabo-scandic.com)

[www.szabo-scandic.com](http://www.szabo-scandic.com)

[linkedin.com/company/szaboscandic](https://www.linkedin.com/company/szaboscandic) 

## CTSH 293T Cell Transient Overexpression Lysate(Denatured)

Catalog # : H00001512-T01

規格 : [ 100 uL ]

[List All](#)

### Specification

**Transfected Cell Line:** 293T

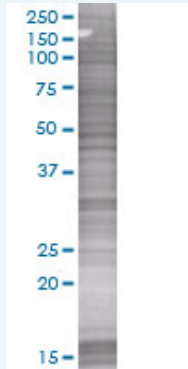
**Plasmid:** pCMV-CTSH full-length

**Host:** Human

**Theoretical MW (kDa):** 36.96

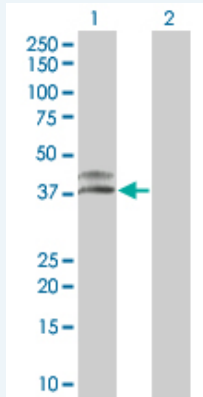
**Quality Control Testing:** Transient overexpression cell lysate was tested with Anti-CTSH antibody (H00001512-B01) by Western Blots.

#### SDS-PAGE Gel



CTSH transfected lysate

#### Western Blot



Lane 1: CTSH transfected lysate ( 36.96 KDa).

Lane 2: Non-transfected lysate.

**Storage Buffer:** 1X Sample Buffer (50 mM Tris-HCl, 2% SDS, 10% glycerol, 300 mM 2-mercaptoethanol, 0.01% Bromophenol blue)

**Storage Instruction:** Store at -80°C. Aliquot to avoid repeated freezing and thawing.

**MSDS:**  [Download](#)

### Applications

## Western Blot

### Gene Information

Entrez GeneID: [1512](#)

GeneBank [BC002479](#)  
Accession#:

Protein [AAH02479](#)  
Accession#:

Gene Name: CTSH

Gene Alias: ACC-4,ACC-5,CPSB,DKFZp686B24257,MGC1519,minichain

Gene Description: cathepsin H

Omim ID: [116820](#)

Gene Ontology: [Hyperlink](#)

**Gene Summary:** The protein encoded by this gene is a lysosomal cysteine proteinase important in the overall degradation of lysosomal proteins. It is composed of a dimer of disulfide-linked heavy and light chains, both produced from a single protein precursor. The encoded protein, which belongs to the peptidase C1 protein family, can act both as an aminopeptidase and as an endopeptidase. Increased expression of this gene has been correlated with malignant progression of prostate tumors. Two transcript variants encoding different isoforms have been found for this gene. [provided by RefSeq]

Other Designations: N-benzoylarginine-beta-naphthylamide hydrolase,aleurain,cathepsin B3,cathepsin BA

### Gene Pathway

[Lysosome](#)

### Related Disease

[Alzheimer Disease](#) [Alzheimer disease](#) [Carcinoma](#) [Cardiovascular Diseases](#) [Celiac Disease](#) [Cognition](#) [Diabetes Mellitus, Type 1](#) [Diabetes Mellitus, Type 2](#) [Edema](#) [Genetic Predisposition to Disease](#) [Lung Neoplasms](#) [Prostatic Neoplasms](#) [Pulmonary Disease, Chronic Obstructive](#) [Urinary Bladder Neoplasms](#) [Werner syndrome](#)

[服務條款](#) | [隱私權政策](#) | [著作及商標](#) | [網站地圖](#)

©2016 亞諾法生技股份有限公司 Abnova Corporation. 版權所有.