



# SZABO SCANDIC

Part of Europa Biosite

## Produktinformation



Forschungsprodukte & Biochemikalien



Zellkultur & Verbrauchsmaterial



Diagnostik & molekulare Diagnostik



Laborgeräte & Service

Weitere Information auf den folgenden Seiten!  
See the following pages for more information!



### Lieferung & Zahlungsart

siehe unsere [Liefer- und Versandbedingungen](#)

### Zuschläge

- Mindermengenzuschlag
- Trockeneiszuschlag
- Gefahrgutzuschlag
- Expressversand

### SZABO-SCANDIC HandelsgmbH

Quellenstraße 110, A-1100 Wien

T. +43(0)1 489 3961-0

F. +43(0)1 489 3961-7

[mail@szabo-scandic.com](mailto:mail@szabo-scandic.com)

[www.szabo-scandic.com](http://www.szabo-scandic.com)

[linkedin.com/company/szaboscandic](https://www.linkedin.com/company/szaboscandic)

## CTSL1 purified MaxPab mouse polyclonal antibody (B01P) MaxPab®

Catalog # : H00001514-B01P

規格 : [ 50 ug ]

[List All](#)

### Specification

**Product Description:** Mouse polyclonal antibody raised against a full-length human CTSL1 protein.

**Immunogen:** CTSL1 (NP\_001903.1, 1 a.a. ~ 333 a.a) full-length human protein.

**Sequence:**  
 MNPTLILAAFCLGIASATLTFDHSLEAQWTKWKAMHNRLYGMNEEGWR  
 RAVWEKNMKMIELHNQEYREGKHSFTMAMNAFGDMTSEEFQRQVMNGF  
 QNRKPRKGKVFQEPLFYEA PRSVDWREKGYVTPVKNQGQCGSCWAFS  
 ATGALEGQMFRKTGRLISLSEQLLVDCSGPQGNEGCGGLMDYAFQY  
 VQDNGGLDSEESYPYEATEESCKYNPKYSVANDTGFVDIPKQEKALMKA  
 VATVGPISVAIDAGHESFLFYKEGIYFEPDCSSEDMDHGVLVVG YGFEST  
 ESDN NKYWL VKNSWGEEWGMGGYVKMAKDRRNHCGIASAASYPTV

**Host:** Mouse

**Reactivity:** Human

**Quality Control Testing:** Antibody reactive against mammalian transfected lysate.

**Storage Buffer:** In 1x PBS, pH 7.4

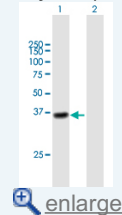
**Storage Instruction:** Store at -20°C or lower. Aliquot to avoid repeated freezing and thawing.

**MSDS:** [Download](#)

**Datasheet:** [Download](#)

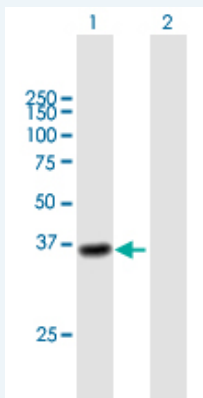
### Application Image

Western Blot (Transfected lysate)



### Applications

Western Blot (Transfected lysate)



Western Blot analysis of CTSL1 expression in transfected 293T cell line (H00135250-T02) by CTSL1 MaxPab polyclonal antibody.

Lane 1: CTSL1 transfected lysate(37.6 KDa).

Lane 2: Non-transfected lysate.

[Protocol Download](#)

## Gene Information

---

**Entrez GeneID:** [1514](#)

---

**GeneBank  
Accession#:** [NM\\_001912.2](#)

---

**Protein  
Accession#:** [NP\\_001903.1](#)

---

**Gene Name:** CTSL1

---

**Gene Alias:** CATL,CTSL,FLJ31037,MEP

---

**Gene  
Description:** cathepsin L1

---

**Omim ID:** [116880](#)

---

**Gene Ontology:** [Hyperlink](#)

---

**Gene Summary:** The protein encoded by this gene is a lysosomal cysteine proteinase that plays a major role in intracellular protein catabolism. Its substrates include collagen and elastin, as well as alpha-1 protease inhibitor, a major controlling element of neutrophil elastase activity. The encoded protein has been implicated in several pathologic processes, including myofibril necrosis in myopathies and in myocardial ischemia, and in the renal tubular response to proteinuria. This protein, which is a member of the peptidase C1 family, is a dimer composed of disulfide-linked heavy and light chains, both produced from a single protein precursor. At least two transcript variants encoding the same protein have been found for this gene. [provided by RefSeq]

---

**Other  
Designations:** OTTHUMP00000021601,OTTHUMP00000021602,OTTHUMP00000063566,cathepsin L,major excreted protein

---

## Gene Pathway

---

[Antigen processing and presentation](#) [Lysosome](#)