



SZABO SCANDIC

Part of Europa Biosite

Produktinformation



Forschungsprodukte & Biochemikalien



Zellkultur & Verbrauchsmaterial



Diagnostik & molekulare Diagnostik



Laborgeräte & Service

Weitere Information auf den folgenden Seiten!
See the following pages for more information!



Lieferung & Zahlungsart

siehe unsere [Liefer- und Versandbedingungen](#)

Zuschläge

- Mindermengenzuschlag
- Trockeneiszuschlag
- Gefahrgutzuschlag
- Expressversand

SZABO-SCANDIC HandelsgmbH

Quellenstraße 110, A-1100 Wien

T. +43(0)1 489 3961-0

F. +43(0)1 489 3961-7

mail@szabo-scandic.com

www.szabo-scandic.com

[linkedin.com/company/szaboscandic](https://www.linkedin.com/company/szaboscandic) 

CTSL1 purified MaxPab rabbit polyclonal antibody (D01P) MaxPab®

Catalog # : H00001514-D01P

規格 : [100 ug]

[List All](#)

Specification

Product Description: Rabbit polyclonal antibody raised against a full-length human CTSL1 protein.

Immunogen: CTSL1 (NP_001903.1, 1 a.a. ~ 333 a.a) full-length human protein.

Sequence:
 MNPTLILAAFCLGIASATLTFDHSLEAQWTKWKAMHNRLYGMNEEGWR
 RAVWEKNMKMIELHNQEYREGKHSFTMAMNAFGDMTSEEFQVMNGF
 QNRKPRKGKVFQEPLFYEAPRSVDWREKGYVTPVKNQGCQCGSCWAFS
 ATGALEGQMFRKTGRLISLSEQLNVDCSGPQGNEGCNGGLMDYAFQY
 VQDNGGLDSEESYPYEATEESCKYNPKYSVANDTGFVDIPKQEKALMKA
 VATVGPISVAIDAGHESFLFYKEGIYFEPDCSSEDMDHGVLVVGYGFFEST
 ESDNKNKYWLKNSWGEEWGMGGYVKMAKDRRNHCGIASAASYPTV

Host: Rabbit

Reactivity: Human, Mouse

Quality Control Testing: Antibody reactive against mammalian transfected lysate.

Storage Buffer: In 1x PBS, pH 7.4

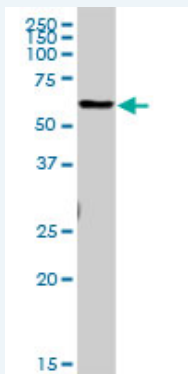
Storage Instruction: Store at -20°C or lower. Aliquot to avoid repeated freezing and thawing.

MSDS:  [Download](#)

Datasheet:  [Download](#)

Applications

Western Blot (Tissue lysate)



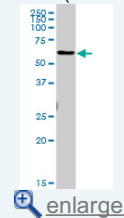
CTSL1 MaxPab rabbit polyclonal antibody. Western Blot analysis of CTSL1 expression in mouse spleen.

 [Protocol Download](#)

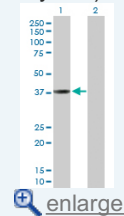
Western Blot (Transfected lysate)

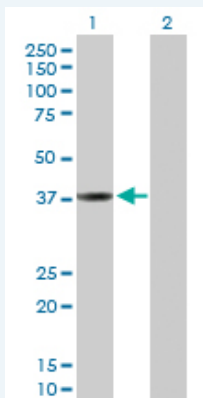
Application Image

Western Blot (Tissue lysate)




Western Blot (Transfected lysate)





Western Blot analysis of CTSL1 expression in transfected 293T cell line ([H00001514-T02](#)) by CTSL1 MaxPab polyclonal antibody.

Lane 1: CTSL1 transfected lysate(37.60 KDa).
Lane 2: Non-transfected lysate.

 [Protocol Download](#)

Gene Information

Entrez GeneID: [1514](#)

GeneBank Accession#: [NM_001912.2](#)

Protein Accession#: [NP_001903.1](#)

Gene Name: CTSL1

Gene Alias: CATL,CTSL,FLJ31037,MEP

Gene Description: cathepsin L1

Omim ID: [116880](#)

Gene Ontology: [Hyperlink](#)

Gene Summary: The protein encoded by this gene is a lysosomal cysteine proteinase that plays a major role in intracellular protein catabolism. Its substrates include collagen and elastin, as well as alpha-1 protease inhibitor, a major controlling element of neutrophil elastase activity. The encoded protein has been implicated in several pathologic processes, including myofibril necrosis in myopathies and in myocardial ischemia, and in the renal tubular response to proteinuria. This protein, which is a member of the peptidase C1 family, is a dimer composed of disulfide-linked heavy and light chains, both produced from a single protein precursor. At least two transcript variants encoding the same protein have been found for this gene. [provided by RefSeq]

Other Designations: OTTHUMP00000021601,OTTHUMP00000021602,OTTHUMP00000063566,cathepsin L,major excreted protein

Gene Pathway

[Antigen processing and presentation](#) [Lysosome](#)