



SZABO SCANDIC

Part of Europa Biosite

Produktinformation



Forschungsprodukte & Biochemikalien



Zellkultur & Verbrauchsmaterial



Diagnostik & molekulare Diagnostik



Laborgeräte & Service

Weitere Information auf den folgenden Seiten!
See the following pages for more information!



Lieferung & Zahlungsart

siehe unsere [Liefer- und Versandbedingungen](#)

Zuschläge

- Mindermengenzuschlag
- Trockeneiszuschlag
- Gefahrgutzuschlag
- Expressversand

SZABO-SCANDIC HandelsgmbH

Quellenstraße 110, A-1100 Wien

T. +43(0)1 489 3961-0

F. +43(0)1 489 3961-7

mail@szabo-scandic.com

www.szabo-scandic.com

[linkedin.com/company/szaboscandic](https://www.linkedin.com/company/szaboscandic) 

CTSL 293T Cell Transient Overexpression Lysate(Denatured)

Catalog # : H00001514-T02

規格 : [100 uL]

[List All](#)

Specification

Transfected Cell Line: 293T

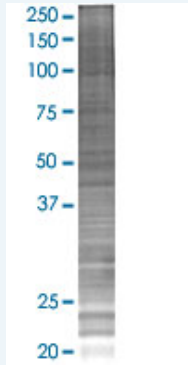
Plasmid: pCMV-CTSL full-length

Host: Human

Theoretical MW (kDa): 37.6

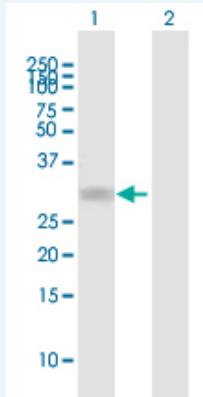
Quality Control Testing: Transient overexpression cell lysate was tested with Anti-CTSL antibody (H00001514-D01P) by Western Blots.

SDS-PAGE Gel



CTSL1 transfected lysate.

Western Blot



Lane 1: CTSL1 transfected lysate (37.60 KDa)

Lane 2: Non-transfected lysate.

Storage Buffer: 1X Sample Buffer (50 mM Tris-HCl, 2% SDS, 10% glycerol, 300 mM 2-mercaptoethanol, 0.01% Bromophenol blue)

Storage Instruction: Store at -80°C. Aliquot to avoid repeated freezing and thawing.

MSDS:  [Download](#)

Applications

Western Blot

Gene Information

Entrez GeneID: [1514](#)

GeneBank Accession#: [NM_001912.2](#)

Protein Accession#: [NP_001903.1](#)

Gene Name: CTSL1

Gene Alias: CATL,CTSL,FLJ31037,MEP

Gene Description: cathepsin L1

Omim ID: [116880](#)

Gene Ontology: [Hyperlink](#)

Gene Summary: The protein encoded by this gene is a lysosomal cysteine proteinase that plays a major role in intracellular protein catabolism. Its substrates include collagen and elastin, as well as alpha-1 protease inhibitor, a major controlling element of neutrophil elastase activity. The encoded protein has been implicated in several pathologic processes, including myofibril necrosis in myopathies and in myocardial ischemia, and in the renal tubular response to proteinuria. This protein, which is a member of the peptidase C1 family, is a dimer composed of disulfide-linked heavy and light chains, both produced from a single protein precursor. At least two transcript variants encoding the same protein have been found for this gene. [provided by RefSeq]

Other Designations: OTTHUMP00000021601,OTTHUMP00000021602,OTTHUMP00000063566,cathepsin L,major excreted protein

Gene Pathway

[Antigen processing and presentation](#) [Lysosome](#)