



SZABO SCANDIC

Part of Europa Biosite

Produktinformation



Forschungsprodukte & Biochemikalien



Zellkultur & Verbrauchsmaterial



Diagnostik & molekulare Diagnostik



Laborgeräte & Service

Weitere Information auf den folgenden Seiten!
See the following pages for more information!



Lieferung & Zahlungsart

siehe unsere [Liefer- und Versandbedingungen](#)

Zuschläge

- Mindermengenzuschlag
- Trockeneiszuschlag
- Gefahrgutzuschlag
- Expressversand

SZABO-SCANDIC HandelsgmbH

Quellenstraße 110, A-1100 Wien

T. +43(0)1 489 3961-0

F. +43(0)1 489 3961-7

mail@szabo-scandic.com

www.szabo-scandic.com

[linkedin.com/company/szaboscandic](https://www.linkedin.com/company/szaboscandic) 

CTSL2 MaxPab mouse polyclonal antibody (B01) MaxPab®

Catalog # : H00001515-B01

規格 : [50 uL]

[List All](#)

Specification

Product Description: Mouse polyclonal antibody raised against a full-length human CTSL2 protein.

Immunogen: CTSL2 (NP_001324, 1 a.a. ~ 334 a.a) full-length human protein.

Sequence:
 MNLSLVLAAFCLGIASAVPKFDQNLDTKWYQWKATHRRLYGANEEGWR
 RAVWEKNMKMIELHNGEYSQGKHGFTMAMNAFGDMTNEEFRQMMGCF
 RNQKFRKGVFREPLFLDLPKSVDWRKKGYVTPVKNQKQCGSCWAFS
 ATGALEGQMFRKTGKLVSLSEQLVDCSRPQGNQGCNGGFMARAFQY
 VKENGLDSEESYPYVAVDEICKYRPENSVANDTGFTVVAPGKEKALMK
 AVATVGPISVAMDAGHSSFQFYKSGIYFEPDCSSKNLDHGVLVVGYGFE
 GANSNNSKYWLKNSWGPEWGSNGYVKIAKDKNNHCGIATAASYPNV

Host: Mouse

Reactivity: Human

Quality Control Testing: Antibody reactive against mammalian transfected lysate.

Storage Buffer: No additive

Storage Instruction: Store at -20°C or lower. Aliquot to avoid repeated freezing and thawing.

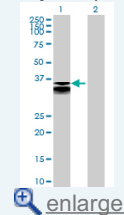
Note: For IHC and IF applications, antibody purification with Protein A will be needed prior to use.


MSDS:  [Download](#)

Datasheet:  [Download](#)

Application Image

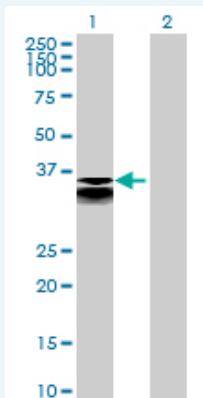
Western Blot (Transfected lysate)



 [enlarge](#)

Applications

Western Blot (Transfected lysate)



Western Blot analysis of CTSL2 expression in transfected 293T cell line ([H00001515-T01](#)) by CTSL2 MaxPab polyclonal antibody.

Lane 1: CTSL2 transfected lysate(36.74 KDa).

Lane 2: Non-transfected lysate.

Gene Information

Entrez GeneID: [1515](#)

**GeneBank
Accession#:** [NM_001333](#)

**Protein
Accession#:** [NP_001324](#)

Gene Name: CTSL2

Gene Alias: CATL2,CTSU,CTSV,MGC125957

**Gene
Description:** cathepsin L2

Omim ID: [603308](#)

Gene Ontology: [Hyperlink](#)

Gene Summary: The protein encoded by this gene, a member of the peptidase C1 family, is a lysosomal cysteine proteinase that may play an important role in corneal physiology. This gene is expressed in colorectal and breast carcinomas but not in normal colon, mammary gland, or peritumoral tissues, suggesting a possible role for this gene in tumor processes. [provided by RefSeq]

**Other
Designations:** OTTHUMP00000021738,cathepsin L2, preproprotein,cathepsin U,cathepsin V

Gene Pathway

[Lysosome](#)

Related Disease

[Diabetes Mellitus, Type 1](#) [Genetic Predisposition to Disease](#) [Myasthenia Gravis](#)