



SZABO SCANDIC

Part of Europa Biosite

Produktinformation



Forschungsprodukte & Biochemikalien



Zellkultur & Verbrauchsmaterial



Diagnostik & molekulare Diagnostik



Laborgeräte & Service

Weitere Information auf den folgenden Seiten!
See the following pages for more information!



Lieferung & Zahlungsart

siehe unsere [Liefer- und Versandbedingungen](#)

Zuschläge

- Mindermengenzuschlag
- Trockeneiszuschlag
- Gefahrgutzuschlag
- Expressversand

SZABO-SCANDIC HandelsgmbH

Quellenstraße 110, A-1100 Wien

T. +43(0)1 489 3961-0

F. +43(0)1 489 3961-7

mail@szabo-scandic.com

www.szabo-scandic.com

[linkedin.com/company/szaboscandic](https://www.linkedin.com/company/szaboscandic) 

CTSL2 293T Cell Transient Overexpression Lysate(Denatured)

Catalog # : H00001515-T01

規格 : [100 uL]

[List All](#)

Specification

Transfected Cell Line: 293T

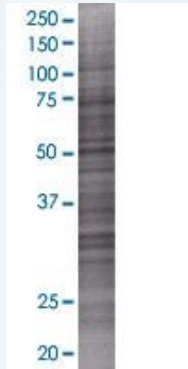
Plasmid: pCMV-CTSL2 full-length

Host: Human

Theoretical MW (kDa): 37.3

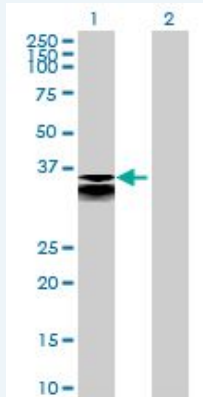
Quality Control Testing: Transient overexpression cell lysate was tested with Anti-CTSL2 antibody ([H00001515-B01](#)) by Western Blots.

SDS-PAGE Gel



CTSL2 transfected lysate.

Western Blot



Lane 1: CTSL2 transfected lysate (37.3 KDa)

Lane 2: Non-transfected lysate.

Storage Buffer: 1X Sample Buffer (50 mM Tris-HCl, 2% SDS, 10% glycerol, 300 mM 2-mercaptoethanol, 0.01% Bromophenol blue)

Storage Instruction: Store at -80°C. Aliquot to avoid repeated freezing and thawing.

MSDS:  [Download](#)

Applications

Western Blot

Gene Information

Entrez GeneID: [1515](#)

GeneBank Accession#: [NM_001333](#)

Protein Accession#: [NP_001324](#)

Gene Name: CTSL2

Gene Alias: CATL2,CTSU,CTSV,MGC125957

Gene Description: cathepsin L2

Omim ID: [603308](#)

Gene Ontology: [Hyperlink](#)

Gene Summary: The protein encoded by this gene, a member of the peptidase C1 family, is a lysosomal cysteine proteinase that may play an important role in corneal physiology. This gene is expressed in colorectal and breast carcinomas but not in normal colon, mammary gland, or peritumoral tissues, suggesting a possible role for this gene in tumor processes. [provided by RefSeq]

Other Designations: OTTHUMP00000021738,cathepsin L2, preproprotein,cathepsin U,cathepsin V

Gene Pathway

[Lysosome](#)

Related Disease

[Diabetes Mellitus, Type 1](#) [Genetic Predisposition to Disease](#) [Myasthenia Gravis](#)