



# SZABO SCANDIC

Part of Europa Biosite

## Produktinformation



Forschungsprodukte & Biochemikalien



Zellkultur & Verbrauchsmaterial



Diagnostik & molekulare Diagnostik



Laborgeräte & Service

Weitere Information auf den folgenden Seiten!  
See the following pages for more information!



### Lieferung & Zahlungsart

siehe unsere [Liefer- und Versandbedingungen](#)

### Zuschläge

- Mindermengenzuschlag
- Trockeneiszuschlag
- Gefahrgutzuschlag
- Expressversand

### SZABO-SCANDIC HandelsgmbH

Quellenstraße 110, A-1100 Wien

T. +43(0)1 489 3961-0

F. +43(0)1 489 3961-7

[mail@szabo-scandic.com](mailto:mail@szabo-scandic.com)

[www.szabo-scandic.com](http://www.szabo-scandic.com)

[linkedin.com/company/szaboscandic](https://www.linkedin.com/company/szaboscandic) 

## CTSS MaxPab mouse polyclonal antibody (B01) MaxPab®

Catalog # : H00001520-B01

規格 : [ 50 uL ]

[List All](#)

### Specification

**Product Description:** Mouse polyclonal antibody raised against a full-length human CTSS protein.

**Immunogen:** CTSS (AAH02642, 1 a.a. ~ 331 a.a) full-length human protein.

**Sequence:**  
 MKRLVCVLLVCSSAVAQLHKDPTLDHHWHLWKKTYGKQYKEKNEEAVR  
 RLIWEKNLKFMVMLHNLEHSMGMHSYDLGMNHLGDMTSEEVMMLMSSLR  
 VPSQWQRNITYKSNPNWILPDSVDWREKGCVTEVKYQGSCGACWAFSA  
 VGALEAQLKLKTGKLVLSAQNLVDCSTEKYGKNGCNGGFMTTAFQYII  
 DNKGIDSDASYPYKAMDQKCQYDSKYRAATCSKYTELPGREDVLKEAV  
 ANKGPVSVGVGDARHPSFFLYRSGVYVEPSCTQNVNHGVLVVGYGDLNG  
 KEYWLVKNSWGHNFGEEGYIRMARNKGNHCGIASFPSYPEI

**Host:** Mouse

**Reactivity:** Human

**Quality Control Testing:** Antibody reactive against mammalian transfected lysate.

**Storage Buffer:** No additive

**Storage Instruction:** Store at -20°C or lower. Aliquot to avoid repeated freezing and thawing.

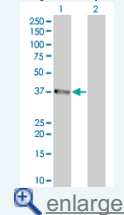
**Note:** For IHC and IF applications, antibody purification with Protein A will be needed prior to use.

**MSDS:**  [Download](#)

**Datasheet:**  [Download](#)

### Application Image

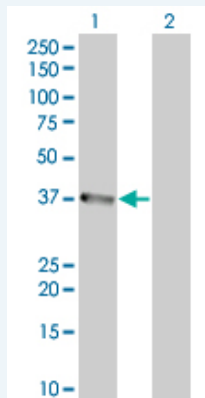
Western Blot (Transfected lysate)



 [enlarge](#)

### Applications

Western Blot (Transfected lysate)



Western Blot analysis of CTSS expression in transfected 293T cell line ([H00001520-T01](#)) by CTSS MaxPab polyclonal antibody.

Lane 1: CTSS transfected lysate(36.52 KDa).

Lane 2: Non-transfected lysate.

## Gene Information

---

**Entrez GeneID:** [1520](#)

**GeneBank  
Accession#:** [BC002642](#)

**Protein  
Accession#:** [AAH02642](#)

**Gene Name:** CTSS

**Gene Alias:** MGC3886

**Gene  
Description:** cathepsin S

**Omim ID:** [116845](#)

**Gene Ontology:** [Hyperlink](#)

**Gene Summary:** The protein encoded by this gene, a member of the peptidase C1 family, is a lysosomal cysteine proteinase that may participate in the degradation of antigenic proteins to peptides for presentation on MHC class II molecules. The encoded protein can function as an elastase over a broad pH range in alveolar macrophages. Transcript variants utilizing alternative polyadenylation signals exist for this gene. [provided by RefSeq]

**Other  
Designations:** OTTHUMP00000032942

## Gene Pathway

---

[Antigen processing and presentation](#) [Lysosome](#)

## Related Disease

---

[Alzheimer Disease](#) [Alzheimer disease](#) [Asthma](#) [Asthma](#) [Atherosclerosis](#)  
[Cardiovascular Diseases](#) [Cognition](#) [Coronary Disease](#) [Diabetes Mellitus, Type 2](#) [Edema](#)  
[Genetic Predisposition to Disease](#) [Multiple Sclerosis](#)  
[Multiple Sclerosis, Relapsing-Remitting](#) [Obesity](#) [Obesity](#)