



SZABO SCANDIC

Part of Europa Biosite

Produktinformation



Forschungsprodukte & Biochemikalien



Zellkultur & Verbrauchsmaterial



Diagnostik & molekulare Diagnostik



Laborgeräte & Service

Weitere Information auf den folgenden Seiten!
See the following pages for more information!



Lieferung & Zahlungsart

siehe unsere [Liefer- und Versandbedingungen](#)

Zuschläge

- Mindermengenzuschlag
- Trockeneiszuschlag
- Gefahrgutzuschlag
- Expressversand

SZABO-SCANDIC HandelsgmbH

Quellenstraße 110, A-1100 Wien

T. +43(0)1 489 3961-0

F. +43(0)1 489 3961-7

mail@szabo-scandic.com

www.szabo-scandic.com

[linkedin.com/company/szaboscandic](https://www.linkedin.com/company/szaboscandic) 

CTSS purified MaxPab rabbit polyclonal antibody (D01P) MaxPab®

Catalog # : H00001520-D01P

規格 : [100 ug]

[List All](#)

Specification

Product Description: Rabbit polyclonal antibody raised against a full-length human CTSS protein.

Immunogen: CTSS (NP_004070.3, 1 a.a. ~ 331 a.a) full-length human protein.

Sequence:
 MKRLVCVLLVCSSAVAQLHKDPTLDHHWHLWKKTYGKQYKEKNEEAVR
 RLIWEKNLKFVMLHNLEHSMGMHSYDLGMNHLGDMTSEEVMMLMSSLR
 VPSQWQRNITYKSNPNRILPDSVDWREKGCVTQVYKQGGSCGACWAFSA
 VGALEAQLKLKTGKLVLSAQNLVDCSTEKYGKNGCNGGFMATAFYII
 DNKGIDSDASYPYKAMDQKQYDSKYRAATCSKYTELPGREDVLKEAV
 ANKGPVSVGVDARHPSFFLYRSGVYVYEPSCTQNVNHGVLVVGYGDLNG
 KEYWLVKNSWGHNFGEEGYIRMARNKGNHCGIASFPSYPEI

Host: Rabbit

Reactivity: Human

Quality Control Testing: Antibody reactive against mammalian transfected lysate.

Storage Buffer: In 1x PBS, pH 7.4

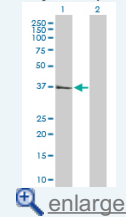
Storage Instruction: Store at -20°C or lower. Aliquot to avoid repeated freezing and thawing.

MSDS:  [Download](#)

Datasheet:  [Download](#)

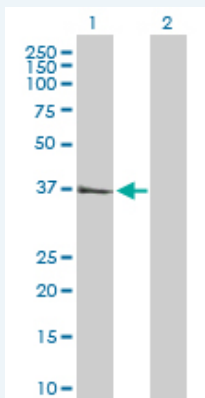
Application Image

Western Blot (Transfected lysate)



Applications

Western Blot (Transfected lysate)



Western Blot analysis of CTSS expression in transfected 293T cell line (H00001520-T03) by CTSS MaxPab polyclonal antibody.

Lane 1: CTSS transfected lysate(37.50 KDa).

Lane 2: Non-transfected lysate.

 [Protocol Download](#)

Gene Information

Entrez GeneID: [1520](#)

**GeneBank
Accession#:** [NM_004079](#)

**Protein
Accession#:** [NP_004070.3](#)

Gene Name: CTSS

Gene Alias: MGC3886

**Gene
Description:** cathepsin S

Omim ID: [116845](#)

Gene Ontology: [Hyperlink](#)

Gene Summary: The protein encoded by this gene, a member of the peptidase C1 family, is a lysosomal cysteine proteinase that may participate in the degradation of antigenic proteins to peptides for presentation on MHC class II molecules. The encoded protein can function as an elastase over a broad pH range in alveolar macrophages. Transcript variants utilizing alternative polyadenylation signals exist for this gene. [provided by RefSeq]

**Other
Designations:** OTTHUMP00000032942

Gene Pathway

[Antigen processing and presentation](#) [Lysosome](#)

Related Disease

[Alzheimer Disease](#) [Alzheimer disease](#) [Asthma](#) [Asthma](#) [Atherosclerosis](#)
[Cardiovascular Diseases](#) [Cognition](#) [Coronary Disease](#) [Diabetes Mellitus, Type 2](#) [Edema](#)
[Genetic Predisposition to Disease](#) [Multiple Sclerosis](#)
[Multiple Sclerosis, Relapsing-Remitting](#) [Obesity](#) [Obesity](#)

[服務條款](#) | [隱私權政策](#) | [著作及商標](#) | [網站地圖](#)

©2016 亞諾法生技股份有限公司 Abnova Corporation. 版權所有.