



SZABO SCANDIC

Part of Europa Biosite

Produktinformation



Forschungsprodukte & Biochemikalien



Zellkultur & Verbrauchsmaterial



Diagnostik & molekulare Diagnostik



Laborgeräte & Service

Weitere Information auf den folgenden Seiten!
See the following pages for more information!



Lieferung & Zahlungsart

siehe unsere [Liefer- und Versandbedingungen](#)

Zuschläge

- Mindermengenzuschlag
- Trockeneiszuschlag
- Gefahrgutzuschlag
- Expressversand

SZABO-SCANDIC HandelsgmbH

Quellenstraße 110, A-1100 Wien

T. +43(0)1 489 3961-0

F. +43(0)1 489 3961-7

mail@szabo-scandic.com

www.szabo-scandic.com

[linkedin.com/company/szaboscandic](https://www.linkedin.com/company/szaboscandic) 

CTSW polyclonal antibody (A01)

Catalog # : H00001521-A01

規格 : [50 uL]

List All

Specification

Product Description: Mouse polyclonal antibody raised against a full-length recombinant CTSW.

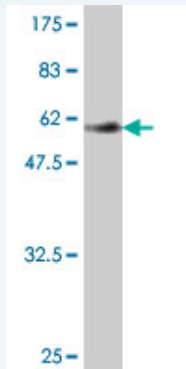
Immunogen: CTSW (AAH48255, 22 a.a. ~ 376 a.a) full-length recombinant protein with GST tag.

Sequence: IRGPLRAQDLGPQPLELKEAFKLFQIQFNRSYLSPEEHAHRLDIFAHNLAQ
AQRLQEEDLGTAIEFGVTPFSDLTEEEFGQLYGYRRAAGGVPSMGREIR
SEEPEESVFPSCDWRKVAGAIPIKDQKNCNCCWAMAAAGNIETLWRISF
WDFVDVSVQELLDCGRGCGDGGCHGGFVWDAFITVLNNSGLASEKDYPF
QGKVRARHRCCHKYQKVAWIQDFIMLQNEHRIAQYLATYGPITVTINMKP
LQLYRKGVIKATPTTCDPQLVDHSVLLVGFSGVKSEEGWAETVSSQSQ
PQPPHPTPYWILKNSWGAQWGEKGYFRLHRGSNTCGITKFPLTARVQK
PDMKPRVSCPP

Host: Mouse

Reactivity: Human

Quality Control Testing: Antibody Reactive Against Recombinant Protein.



Western Blot detection against Immunogen (65.16 KDa) .

Storage Buffer: 50 % glycerol

Storage Instruction: Store at -20°C or lower. Aliquot to avoid repeated freezing and thawing.

MSDS: [Download](#)

Datasheet: [Download](#)

Applications

Western Blot (Recombinant protein)

[Protocol Download](#)

ELISA

Gene Information

Application Image

Western Blot (Recombinant protein)

ELISA

Entrez GeneID: [1521](#)

GeneBank
Accession#: [BC048255](#)

Protein
Accession#: [AAH48255](#)

Gene Name: CTSW

Gene Alias: LYPN

Gene
Description: cathepsin W

Omim ID: [602364](#)

Gene Ontology: [Hyperlink](#)

Gene Summary: The protein encoded by this gene, a member of the peptidase C1 family, is a cysteine proteinase that may have a specific function in the mechanism or regulation of T-cell cytolytic activity. The encoded protein is found associated with the membrane inside the endoplasmic reticulum of natural killer and cytotoxic T-cells. Expression of this gene is up-regulated by interleukin-2. [provided by RefSeq]

Other
Designations: lymphopain

Gene Pathway

[Lysosome](#)

[服務條款](#) | [隱私權政策](#) | [著作及商標](#) | [網站地圖](#)

©2016 亞諾法生技股份有限公司 Abnova Corporation. 版權所有.