



SZABO SCANDIC

Part of Europa Biosite

Produktinformation



Forschungsprodukte & Biochemikalien



Zellkultur & Verbrauchsmaterial



Diagnostik & molekulare Diagnostik



Laborgeräte & Service

Weitere Information auf den folgenden Seiten!
See the following pages for more information!



Lieferung & Zahlungsart

siehe unsere [Liefer- und Versandbedingungen](#)

Zuschläge

- Mindermengenzuschlag
- Trockeneiszuschlag
- Gefahrgutzuschlag
- Expressversand

SZABO-SCANDIC HandelsgmbH

Quellenstraße 110, A-1100 Wien

T. +43(0)1 489 3961-0

F. +43(0)1 489 3961-7

mail@szabo-scandic.com

www.szabo-scandic.com

[linkedin.com/company/szaboscandic](https://www.linkedin.com/company/szaboscandic) 

CTSW monoclonal antibody (M01), clone 4A8

Catalog # : H00001521-M01

規格 : [100 ug]

[List All](#)

Specification

Product Description: Mouse monoclonal antibody raised against a full length recombinant CTSW.

Immunogen: CTSW (AAH48255, 22 a.a. ~ 376 a.a) full-length recombinant protein with GST tag. MW of the GST tag alone is 26 KDa.

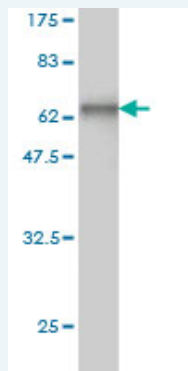
Sequence:
 IRGPLRAQDLGPQPLELKEAFKLFQIQFNRSYLSPEEHAHRLDIFAHNLAQ
 AQRLQEEDLGTAIEFGVTPFSDLTEEEFGQLYGYRRAAGGVPSMGREIR
 SEEPEESVPFSCDWRKVAGAIPIKDQKNCNCWAMAAAGNIETLWRISF
 WDFVDVSVQELLDCGRCDGCHGGFVWDAFITVLNNSGLASEKDYPF
 QGKVRARHRCHPKQYQKVAWIQDFIMLQNEHRIAQYLATYGPITVTINMKP
 LQLYRKGVIKATPTTCDPQLVDHSVLLVGFSGSVKSEGIWAETVSSQSQ
 PQPPHPTPYWILKNSWGAQWGEKGYFRLHRGSNTCGITKFPLTARVQK
 PDMKPRVSCPP

Host: Mouse

Reactivity: Human

Isotype: IgG2a Kappa

Quality Control Testing: Antibody Reactive Against Recombinant Protein.



Western Blot detection against Immunogen (64.79 KDa) .

Storage Buffer: In 1x PBS, pH 7.4

Storage Instruction: Store at -20°C or lower. Aliquot to avoid repeated freezing and thawing.

MSDS: [Download](#)

Datasheet: [Download](#)

Applications

Western Blot (Recombinant protein)

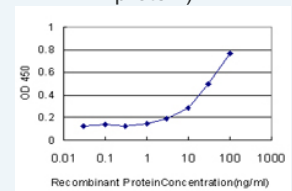
[Protocol Download](#)

Sandwich ELISA (Recombinant protein)

Application Image

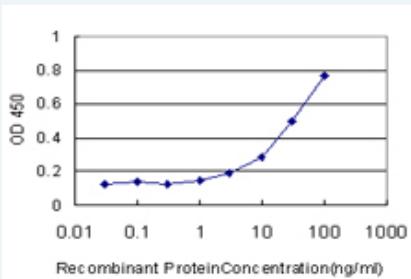
Western Blot (Recombinant protein)

Sandwich ELISA (Recombinant protein)



[enlarge](#)

ELISA



Detection limit for recombinant GST tagged CTSW is approximately 3ng/ml as a capture antibody.

 [Protocol Download](#)

ELISA

Gene Information

Entrez GeneID: [1521](#)

GeneBank [BC048255](#)

Accession#:

Protein [AAH48255](#)

Accession#:

Gene Name: CTSW

Gene Alias: LYPN

Gene Description: cathepsin W

Omim ID: [602364](#)

Gene Ontology: [Hyperlink](#)

Gene Summary: The protein encoded by this gene, a member of the peptidase C1 family, is a cysteine proteinase that may have a specific function in the mechanism or regulation of T-cell cytolytic activity. The encoded protein is found associated with the membrane inside the endoplasmic reticulum of natural killer and cytotoxic T-cells. Expression of this gene is up-regulated by interleukin-2. [provided by RefSeq]

Other Designations: lymphopain

Designations:

Gene Pathway

[Lysosome](#)