



SZABO SCANDIC

Part of Europa Biosite

Produktinformation



Forschungsprodukte & Biochemikalien



Zellkultur & Verbrauchsmaterial



Diagnostik & molekulare Diagnostik



Laborgeräte & Service

Weitere Information auf den folgenden Seiten!
See the following pages for more information!



Lieferung & Zahlungsart

siehe unsere [Liefer- und Versandbedingungen](#)

Zuschläge

- Mindermengenzuschlag
- Trockeneiszuschlag
- Gefahrgutzuschlag
- Expressversand

SZABO-SCANDIC HandelsgmbH

Quellenstraße 110, A-1100 Wien

T. +43(0)1 489 3961-0

F. +43(0)1 489 3961-7

mail@szabo-scandic.com

www.szabo-scandic.com

[linkedin.com/company/szaboscandic](https://www.linkedin.com/company/szaboscandic)

CTSZ 293T Cell Transient Overexpression Lysate(Denatured)

Catalog # : H00001522-T02

規格 : [100 uL]

[List All](#)

Specification

Transfected Cell Line: 293T

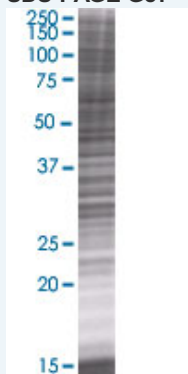
Plasmid: pCMV-CTSZ full-length

Host: Human

Theoretical MW (kDa): 33.44

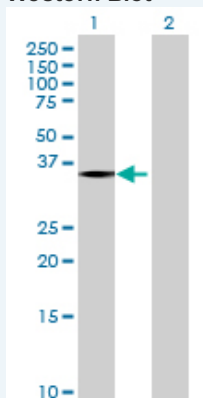
Quality Control Testing: Transient overexpression cell lysate was tested with Anti-CTSZ antibody (H00001522-B02) by Western Blots.

SDS-PAGE Gel



CTSZ transfected lysate.

Western Blot



Lane 1: CTSZ transfected lysate (33.44 KDa)

Lane 2: Non-transfected lysate.

Storage Buffer: 1X Sample Buffer (50 mM Tris-HCl, 2% SDS, 10% glycerol, 300 mM 2-mercaptoethanol, 0.01% Bromophenol blue)

Storage Instruction: Store at -80°C. Aliquot to avoid repeated freezing and thawing.

MSDS:  [Download](#)

Applications

Western Blot

Gene Information

Entrez GeneID: [1522](#)

GeneBank Accession#: [NM_001336.2](#)

Protein Accession#: [NP_001327.2](#)

Gene Name: CTSZ

Gene Alias: CTSX,FLJ17088

Gene Description: cathepsin Z

Omim ID: [603169](#)

Gene Ontology: [Hyperlink](#)

Gene Summary: The protein encoded by this gene is a lysosomal cysteine proteinase and member of the peptidase C1 family. It exhibits both carboxy-monopeptidase and carboxy-dipeptidase activities. The encoded protein has also been known as cathepsin X and cathepsin P. This gene is expressed ubiquitously in cancer cell lines and primary tumors and, like other members of this family, may be involved in tumorigenesis. [provided by RefSeq]

Other Designations: OTTHUMP00000031409,cathepsin X,preprocathepsin P

Gene Pathway

[Lysosome](#)

Related Disease

[Alzheimer Disease](#) [Alzheimer disease](#) [Cognition](#) [Genetic Predisposition to Disease](#)
[Tuberculosis, Pulmonary](#)

[服務條款](#) | [隱私權政策](#) | [著作及商標](#) | [網站地圖](#)

©2016 亞諾法生技股份有限公司 Abnova Corporation. 版權所有.