



# SZABO SCANDIC

Part of Europa Biosite

## Produktinformation



Forschungsprodukte & Biochemikalien



Zellkultur & Verbrauchsmaterial



Diagnostik & molekulare Diagnostik



Laborgeräte & Service

Weitere Information auf den folgenden Seiten!  
See the following pages for more information!



### Lieferung & Zahlungsart

siehe unsere [Liefer- und Versandbedingungen](#)

### Zuschläge

- Mindermengenzuschlag
- Trockeneiszuschlag
- Gefahrgutzuschlag
- Expressversand

### SZABO-SCANDIC HandelsgmbH

Quellenstraße 110, A-1100 Wien

T. +43(0)1 489 3961-0

F. +43(0)1 489 3961-7

[mail@szabo-scandic.com](mailto:mail@szabo-scandic.com)

[www.szabo-scandic.com](http://www.szabo-scandic.com)

[linkedin.com/company/szaboscandic](https://www.linkedin.com/company/szaboscandic) 

## CUTL1 polyclonal antibody (A01)

Catalog # : H00001523-A01

規格 : [ 50 uL ]

List All

### Specification

**Product Description:** Mouse polyclonal antibody raised against a partial recombinant CUTL1.

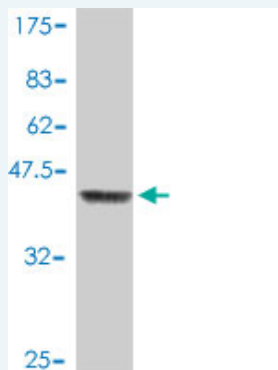
**Immunogen:** CUTL1 (NP\_001904.2, 521 a.a. ~ 620 a.a) partial recombinant protein with GST tag.

**Sequence:** AENRLAQHTLQALQSELDLRLADNIKLFKIKFLQSYPGRGGSGSDDTELRYSSQYEERLDPFSSFSKRERQRKYLSPWDKATLSMGRLVLSNKMAR TI

**Host:** Mouse

**Reactivity:** Human

**Quality Control Testing:** Antibody Reactive Against Recombinant Protein.



Western Blot detection against Immunogen (37.11 kDa) .

**Storage Buffer:** 50 % glycerol

**Storage Instruction:** Store at -20°C or lower. Aliquot to avoid repeated freezing and thawing.

**MSDS:** [Download](#)

**Datasheet:** [Download](#)

### Applications

**Western Blot (Recombinant protein)**

[Protocol Download](#)

**ELISA**

### Gene Information

**Entrez GeneID:** [1523](#)

**GeneBank Accession#:** [NM\\_001913](#)

### Application Image

Western Blot (Recombinant protein)

ELISA

**Protein Accession#:** [NP\\_001904.2](#)

**Gene Name:** CUX1

**Gene Alias:** CASP,CDP,CDP/Cut,CDP1,COY1,CUTL1,CUX,Clox,Cux/CDP,GOLIM6,Nbla10317,p100,p110,p200,p75

**Gene Description:** cut-like homeobox 1

**Omim ID:** [116896](#)

**Gene Ontology:** [Hyperlink](#)

**Gene Summary:** The protein encoded by this gene is a member of the homeodomain family of DNA binding proteins. It may regulate gene expression, morphogenesis, and differentiation and it may also play a role in the cell cycle progression. Several alternatively spliced transcript variants of this gene have been described, but the full-length nature of some of these variants has not been determined. [provided by RefSeq]

**Other Designations:** cut homeobox, cut homolog, cut-like 1, CCAAT displacement protein, golgi integral membrane protein 6, putative protein product of Nbla10317

#### **Related Disease**

[Tobacco Use Disorder](#)