



SZABO SCANDIC

Part of Europa Biosite

Produktinformation



Forschungsprodukte & Biochemikalien



Zellkultur & Verbrauchsmaterial



Diagnostik & molekulare Diagnostik



Laborgeräte & Service

Weitere Information auf den folgenden Seiten!
See the following pages for more information!



Lieferung & Zahlungsart

siehe unsere [Liefer- und Versandbedingungen](#)

Zuschläge

- Mindermengenzuschlag
- Trockeneiszuschlag
- Gefahrgutzuschlag
- Expressversand

SZABO-SCANDIC HandelsgmbH

Quellenstraße 110, A-1100 Wien

T. +43(0)1 489 3961-0

F. +43(0)1 489 3961-7

mail@szabo-scandic.com

www.szabo-scandic.com

[linkedin.com/company/szaboscandic](https://www.linkedin.com/company/szaboscandic) 

CUX1 purified MaxPab rabbit polyclonal antibody (D01P) MaxPab®

Catalog # : H00001523-D01P

規格 : [100 ug]

[List All](#)

Specification

Product Description: Rabbit polyclonal antibody raised against a full-length human CUX1 protein.

Immunogen: CUX1 (AAH25422.1, 1 a.a. ~ 676 a.a) full-length human protein.

Sequence:
 MAANVGSMFQYWKRFDLQQLQRELDATATVLANRQDESEQSRKRLIEQ
 SREFKKNTPEDLRKQVAPLLKSFQGEIDALSKRSKEAEEAFLNVYKRLIDV
 PDPVPALDLGQQQLKLVQRLHDIETENQKLRETLEEYNKEFAEVKNQEV
 TIKALKEKIREYEQTLKNQAETIALEKEQKLQNDFAEKERKLQETQMSTTS
 KLEEAHKVQSLQTALEKTRTELFDLKTKYDEETAKADEIEMIMTDLER
 ANQRAEVAQREAETLREQLSSANHSLQLASQIQKAPDVAIEVLTRSSLEV
 ELAAKEREIAQLVEDVQRLQASLTKLRENSASQISQLEQQLSAKNSTLKQ
 LEEKLGQADYEEVKKELNILKSMFAPSEGAGTQDAAKPLEVLLLEKNR
 SLQSESAALRISNSDLSGRCAELQVRITEAVATATEQRELIARLEQDLSIIQ
 SIQRPDAEGAAEHRLEKIPEPIKEATALFYGPAAPASGALPEGQVDSLLSII
 SSQRERFRARNQELEAENRLAQHTLQALQSELDLADNVKLFKIKIFL
 QSYPGRGSDDDELRYSSQYEERLDPFSSF SKRERQRKYLSPWDK
 ATLSMGRVLVSNKMARTIGFFYTLFLHCLVFLVLYKLAWSESMERDCAT
 FCAKKFADHLHKFHENDNGAAAGDLWQ

Host: Rabbit

Reactivity: Human

Quality Control Testing: Antibody reactive against mammalian transfected lysate.

Storage Buffer: In 1x PBS, pH 7.4

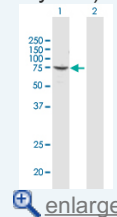
Storage Instruction: Store at -20°C or lower. Aliquot to avoid repeated freezing and thawing.


MSDS:  [Download](#)

Datasheet:  [Download](#)

Application Image

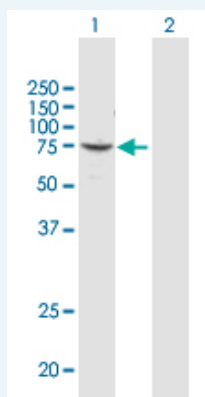
Western Blot (Transfected lysate)



 [enlarge](#)

Applications

Western Blot (Transfected lysate)



Western Blot analysis of CUX1 expression in transfected 293T cell line (H00001523-T01)

by CUX1 MaxPab polyclonal antibody.

Lane 1: CUX1 transfected lysate(77.20 KDa).

Lane 2: Non-transfected lysate.

 [Protocol Download](#)

Gene Information

Entrez GeneID: [1523](#)

GeneBank [BC025422.2](#)

Accession#:

Protein [AAH25422.1](#)

Accession#:

Gene Name: CUX1

Gene Alias: CASP,CDP,CDP/Cut,CDP1,COY1,CUTL1,CUX,Clox,Cux/CDP,GOLIM6,Nbla10317,p100,p110,p200,p75

Gene Description: cut-like homeobox 1

Omim ID: [116896](#)

Gene Ontology: [Hyperlink](#)

Gene Summary: The protein encoded by this gene is a member of the homeodomain family of DNA binding proteins. It may regulate gene expression, morphogenesis, and differentiation and it may also play a role in the cell cycle progression. Several alternatively spliced transcript variants of this gene have been described, but the full-length nature of some of these variants has not been determined. [provided by RefSeq]

Other Designations: cut homeobox, cut homolog, cut-like 1, CCAAT displacement protein, golgi integral membrane protein 6, putative protein product of Nbla10317

Related Disease

[Tobacco Use Disorder](#)

[服務條款](#) | [隱私權政策](#) | [著作及商標](#) | [網站地圖](#)

©2016 亞諾法生技股份有限公司 Abnova Corporation. 版權所有.