



SZABO SCANDIC

Part of Europa Biosite

Produktinformation



Forschungsprodukte & Biochemikalien



Zellkultur & Verbrauchsmaterial



Diagnostik & molekulare Diagnostik



Laborgeräte & Service

Weitere Information auf den folgenden Seiten!
See the following pages for more information!



Lieferung & Zahlungsart

siehe unsere [Liefer- und Versandbedingungen](#)

Zuschläge

- Mindermengenzuschlag
- Trockeneiszuschlag
- Gefahrgutzuschlag
- Expressversand

SZABO-SCANDIC HandelsgmbH

Quellenstraße 110, A-1100 Wien

T. +43(0)1 489 3961-0

F. +43(0)1 489 3961-7

mail@szabo-scandic.com

www.szabo-scandic.com

[linkedin.com/company/szaboscandic](https://www.linkedin.com/company/szaboscandic) 

CXorf2 MaxPab mouse polyclonal antibody (B03) MaxPab®

Catalog # : H00001527-B03

規格 : [50 uL]

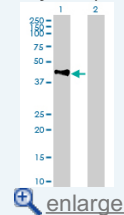
[List All](#)

Specification

Product Description:	Mouse polyclonal antibody raised against a full-length human CXorf2 protein.
Immunogen:	CXorf2 (NP_001577.1, 1 a.a. ~ 410 a.a) full-length human protein.
Sequence:	MVLKAEHTRSPSATLPSNVPSRCRSLSSSEGGPSGSSLADGGGLAHNLQD SVRHRILYLSEQLRVEKASRDGNTVSYLKLVSKADRHQVPHIQQAFKVN QRASATIAQIEHRLHQCHQQLQELEEGCRPEGLLLMAESDPANCEPPSE KALLSEPPPEGGEDGPVNLPHASRPFILSRFQSLQQGTCLLETEDVAQQ QNLLLQKVKAELAAKRFHISLQESYHSLKERSLTDLQLLLESLQEEKCR QALMEEQVNGRLQGQLNEIYNLKHNLACSEERMAYLSYERAKEIWEITET FKSRISKLEMLQQVTQLEAAEHLQSRPPQMLFKFLSPRLSLATVLLVFVS TLCACPSSLISSRLCTCTMLMLIGLVLAQRWRAIPATDWQEWVPSRC RLYSKDSGPPADGP
Host:	Mouse
Reactivity:	Human
Quality Control Testing:	Antibody reactive against mammalian transfected lysate.
Storage Buffer:	No additive
Storage Instruction:	Store at -20°C or lower. Aliquot to avoid repeated freezing and thawing.
Note:	For IHC and IF applications, antibody purification with Protein A will be needed prior to use.
MSDS:	Download
Datasheet:	Download

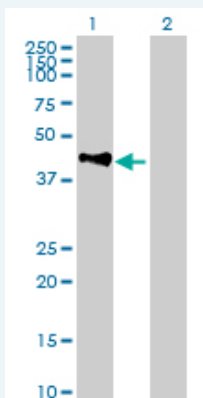
Application Image

Western Blot (Transfected lysate)



Applications

Western Blot (Transfected lysate)



Western Blot analysis of TEX28 expression in transfected 293T cell line (H00001527-T01) by TEX28 MaxPab polyclonal antibody.

Lane 1: CXorf2 transfected lysate(45.1 KDa).
Lane 2: Non-transfected lysate.

 [Protocol Download](#)

Gene Information

Entrez GeneID: [1527](#)

**GeneBank
Accession#:** [NM_001586](#)

**Protein
Accession#:** [NP_001577.1](#)

Gene Name: TEX28

Gene Alias: CXorf2,fTEX

**Gene
Description:** testis expressed 28

Omim ID: [300092](#)

Gene Ontology: [Hyperlink](#)

**Other
Designations:** OTTHUMP00000024239,OTTHUMP00000061688

[服務條款](#) | [隱私權政策](#) | [著作及商標](#) | [網站地圖](#)

©2016 亞諾法生技股份有限公司 Abnova Corporation. 版權所有.