



# SZABO SCANDIC

Part of Europa Biosite

## Produktinformation



Forschungsprodukte & Biochemikalien



Zellkultur & Verbrauchsmaterial



Diagnostik & molekulare Diagnostik



Laborgeräte & Service

Weitere Information auf den folgenden Seiten!  
See the following pages for more information!



### Lieferung & Zahlungsart

siehe unsere [Liefer- und Versandbedingungen](#)

### Zuschläge

- Mindermengenzuschlag
- Trockeneiszuschlag
- Gefahrgutzuschlag
- Expressversand

### SZABO-SCANDIC HandelsgmbH

Quellenstraße 110, A-1100 Wien

T. +43(0)1 489 3961-0

F. +43(0)1 489 3961-7

[mail@szabo-scandic.com](mailto:mail@szabo-scandic.com)

[www.szabo-scandic.com](http://www.szabo-scandic.com)

[linkedin.com/company/szaboscandic](https://www.linkedin.com/company/szaboscandic) 

## TEX28 monoclonal antibody (M05), clone 1A8

Catalog # : H00001527-M05

規格 : [ 100 ug ]

[List All](#)

### Specification

**Product Description:** Mouse monoclonal antibody raised against a full-length recombinant TEX28.

**Immunogen:** TEX28 (AAH26183, 1 a.a. ~ 410 a.a) full-length recombinant protein with GST tag. MW of the GST tag alone is 26 KDa.

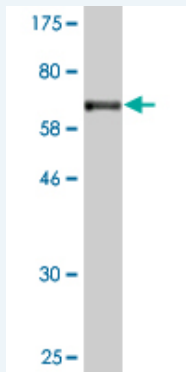
**Sequence:** MVLKAEHTRSPSATLPSNVPSRSLSSSEEDGSPSGPSSLADGGLAHNLQD SVRHRILYLSEQLRVEKASRDGNTVSYLKLVSADRHQVPHIQQAFKVN QRASATIAQIEHRLHQCHQQLQELEEGCRPEGLLLMAESDPANCEPPSE KALLSEPPEPGGEDGPVNLPHASRPFILESRFQSLQQGT CLETEDVAQQ QNLLLQKVKAELAAKRFHISLQESYHSLKERSLTDLQLLLESLQEEKCR QALMEEQVNGRLQGQLNEIYNLKHNLACSEERMAYLSYERAKEIWEITET FKSRIKLEMLQQVTQLEAAEHLQSRPPQMLFKFLSPRLSLATVLLVFVS TLCACPSSLISSRLCTCTMLMLIGLVLAQRWRRAIPATDWQEWVPSRC RLYSKDSGPPADGP

**Host:** Mouse

**Reactivity:** Human

**Isotype:** IgG2a Kappa

**Quality Control Testing:** Antibody Reactive Against Recombinant Protein.



Western Blot detection against Immunogen (70.84 KDa) .

**Storage Buffer:** In 1x PBS, pH 7.4

**Storage Instruction:** Store at -20°C or lower. Aliquot to avoid repeated freezing and thawing.

**MSDS:** [Download](#)

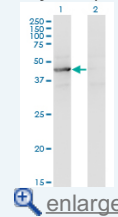
**Datasheet:** [Download](#)

### Applications

**Western Blot (Transfected lysate)**

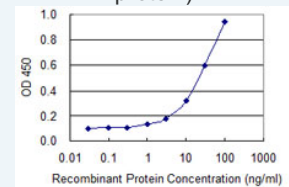
### Application Image

Western Blot (Transfected lysate)



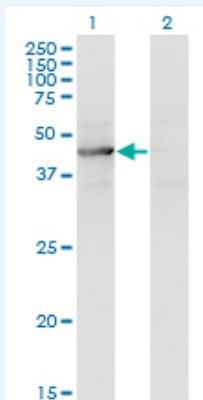
Western Blot (Recombinant protein)

Sandwich ELISA (Recombinant protein)



[enlarge](#)

ELISA



Western Blot analysis of TEX28 expression in transfected 293T cell line by TEX28 monoclonal antibody (M05), clone 1A8.

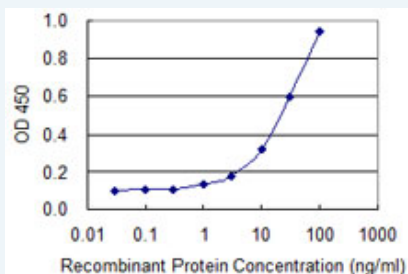
Lane 1: TEX28 transfected lysate (Predicted MW: 46.1 KDa).  
Lane 2: Non-transfected lysate.

[Protocol Download](#)

#### Western Blot (Recombinant protein)

[Protocol Download](#)

#### Sandwich ELISA (Recombinant protein)



Detection limit for recombinant GST tagged TEX28 is 0.3 ng/ml as a capture antibody.

[Protocol Download](#)

#### ELISA

#### Gene Information

Entrez GeneID: [1527](#)

GeneBank [BC026183](#)

Accession#:

Protein [AAH26183](#)

Accession#:

Gene Name: TEX28

Gene Alias: CXorf2,fTEX

Gene Description: testis expressed 28

Description:

Omim ID: [300092](#)

Gene Ontology: [Hyperlink](#)

Other Designations: OTTHUMP00000024239,OTTHUMP00000061688

Designations:

