



# SZABO SCANDIC

Part of Europa Biosite

## Produktinformation



Forschungsprodukte & Biochemikalien



Zellkultur & Verbrauchsmaterial



Diagnostik & molekulare Diagnostik



Laborgeräte & Service

Weitere Information auf den folgenden Seiten!  
See the following pages for more information!



### Lieferung & Zahlungsart

siehe unsere [Liefer- und Versandbedingungen](#)

### Zuschläge

- Mindermengenzuschlag
- Trockeneiszuschlag
- Gefahrgutzuschlag
- Expressversand

### SZABO-SCANDIC HandelsgmbH

Quellenstraße 110, A-1100 Wien

T. +43(0)1 489 3961-0

F. +43(0)1 489 3961-7

[mail@szabo-scandic.com](mailto:mail@szabo-scandic.com)

[www.szabo-scandic.com](http://www.szabo-scandic.com)

[linkedin.com/company/szaboscandic](https://www.linkedin.com/company/szaboscandic) 

**CYC1 purified MaxPab mouse polyclonal antibody (B01P)** MaxPab®

Catalog # : H00001537-B01P

規格 : [ 50 ug ]

[List All](#)

**Specification**

**Product Description:** Mouse polyclonal antibody raised against a full-length human CYC1 protein.

**Immunogen:** CYC1 (NP\_001907.2, 1 a.a. ~ 325 a.a) full-length human protein.

**Sequence:**  
 MAAAAASLRGVVLGPRGAGLPGARARGLLCSARPGQLPLRTPQAVALS  
 SKSGLSRGRKVMLSALGMLAAGGAGLAVALHSAVSASDLELHPPSYPW  
 SHRGLLSSLDHTSIRRGFQVYKQVCASCHSMDFVAYRHLVGVCYTEDEA  
 KELAAEVEVQDGPNEGEMFMRPGKLFDYFPKPYPNSEAAARAANGAL  
 PPDLSYMRARHGGEDYVFSLLTGYCEPPTGVSLREGLYFNPFYFGQAIA  
 MAPPIYTDVLEFDDGTPATMSQIAKDVCTFLRWASEPEHDHRKRMGLKM  
 LMMALLVPLVYTIKRHKWSVLKSRKLAYRPPK

**Host:** Mouse

**Reactivity:** Human

**Quality Control Testing:** Antibody reactive against mammalian transfected lysate.

**Storage Buffer:** In 1x PBS, pH 7.4

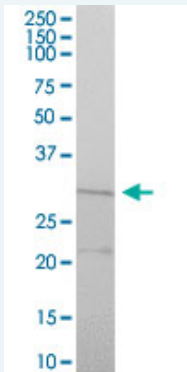
**Storage Instruction:** Store at -20°C or lower. Aliquot to avoid repeated freezing and thawing.

**MSDS:**  [Download](#)

**Datasheet:**  [Download](#)

**Applications**

**Western Blot (Tissue lysate)**



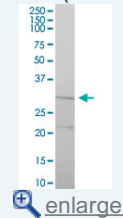
CYC1 MaxPab polyclonal antibody. Western Blot analysis of CYC1 expression in human kidney.


 [Protocol Download](#)

**Western Blot (Transfected lysate)**

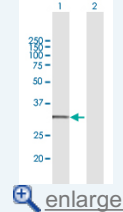
**Application Image**


**Western Blot (Tissue lysate)**



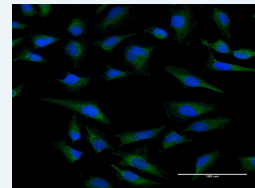
 [enlarge](#)


**Western Blot (Transfected lysate)**

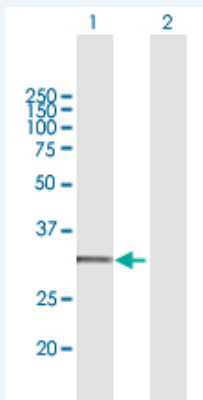


 [enlarge](#)

**Immunofluorescence**




 [enlarge](#)

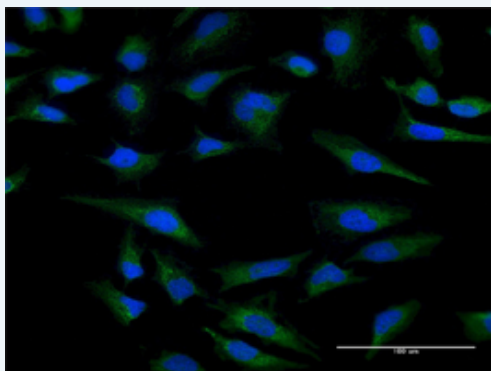



Western Blot analysis of CYC1 expression in transfected 293T cell line ([H00001537-T02](#)) by CYC1 MaxPab polyclonal antibody.

Lane 1: CYC1 transfected lysate(35.40 kDa).  
Lane 2: Non-transfected lysate.


 [Protocol Download](#)

### Immunofluorescence



 [enlarge this image](#)

Immunofluorescence of [purified](#) MaxPab antibody to CYC1 on HeLa cell. [antibody concentration 10 ug/ml]

 [Protocol Download](#)

### Gene Information

**Entrez GeneID:** [1537](#)

**GeneBank** [NM\\_001916](#)  
**Accession#:**

**Protein** [NP\\_001907.2](#)  
**Accession#:**

**Gene Name:** CYC1

**Gene Alias:** UQCR4

**Gene** cytochrome c-1  
**Description:**

**Omim ID:** [123980](#)

**Gene Ontology:** [Hyperlink](#)

**Other** -  
**Designations:**

### Gene Pathway

[Alzheimer's disease](#) [Cardiac muscle contraction](#) [Huntington's disease](#) [Metabolic pathways](#)  
[Oxidative phosphorylation](#) [Parkinson's disease](#)

## Related Disease

[Genetic Predisposition to Disease](#) [Ovarian Neoplasms](#)

---

[服務條款](#) | [隱私權政策](#) | [著作及商標](#) | [網站地圖](#)

©2016 亞諾法生技股份有限公司 Abnova Corporation. 版權所有.