



# SZABO SCANDIC

Part of Europa Biosite

## Produktinformation



Forschungsprodukte & Biochemikalien



Zellkultur & Verbrauchsmaterial



Diagnostik & molekulare Diagnostik



Laborgeräte & Service

Weitere Information auf den folgenden Seiten!  
See the following pages for more information!



### Lieferung & Zahlungsart

siehe unsere [Liefer- und Versandbedingungen](#)

### Zuschläge

- Mindermengenzuschlag
- Trockeneiszuschlag
- Gefahrgutzuschlag
- Expressversand

### SZABO-SCANDIC HandelsgmbH

Quellenstraße 110, A-1100 Wien

T. +43(0)1 489 3961-0

F. +43(0)1 489 3961-7

[mail@szabo-scandic.com](mailto:mail@szabo-scandic.com)

[www.szabo-scandic.com](http://www.szabo-scandic.com)

[linkedin.com/company/szaboscandic](https://www.linkedin.com/company/szaboscandic) 

## CYC1 purified MaxPab rabbit polyclonal antibody (D01P) MaxPab®

Catalog # : H00001537-D01P

規格 : [ 100 ug ]

[List All](#)

### Specification

**Product Description:** Rabbit polyclonal antibody raised against a full-length human CYC1 protein.

**Immunogen:** CYC1 (NP\_001907.2, 1 a.a. ~ 325 a.a) full-length human protein.

**Sequence:**  
 MAAAAASLRGVVLGPRGAGLPGARARGLLCSARPGQLPLRTPQAVALS  
 SKSGLSRGRKVMLSALGMLAAGGAGLAVALHSAVSASDLELHPPSYPW  
 SHRGLLSSLDHTSIRRGFQVYKQVCASCHSMDFVAYRHLVGVCYTEDEA  
 KELAAEVEVQDGPNEGEMFMRPGKLFDYF PKPYPNSEAAARAANNAL  
 PPDLSYMRARHGGEDYVFSLLTGYCEPPTGVSLREGLYFNPFYFGQAIA  
 MAPPIYTDVLEFDDGTPATMSQIAKDVCTFLRWASEPEHDHRKRMGLKM  
 LMMMALLVPLVYTIKRHKWSVLKSRKLAYRPPK

**Host:** Rabbit

**Reactivity:** Human, Mouse

**Quality Control Testing:** Antibody reactive against mammalian transfected lysate.

**Storage Buffer:** In 1x PBS, pH 7.4

**Storage Instruction:** Store at -20°C or lower. Aliquot to avoid repeated freezing and thawing.

**MSDS:** [Download](#)

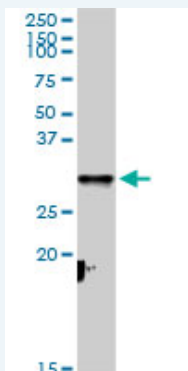
**Datasheet:** [Download](#)

### Publication Reference

1. [Radiation-induced signaling results in mitochondrial impairment in mouse heart at 4 weeks after exposure to x-rays.](#)  
 Barjaktarovic Z, Schmaltz D, Shyla A, Azimzadeh O, Schulz S, Haagen J, Dorr W, Sarioglu H, Schafer A, Atkinson MJ, Zischka H, Tapio S. PLoS One. 2011;6(12):e27811. Epub 2011 Dec 8.

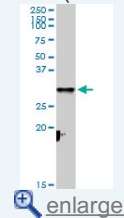
### Applications

#### Western Blot (Tissue lysate)

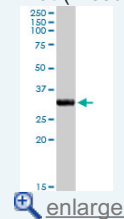


### Application Image

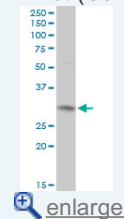
#### Western Blot (Tissue lysate)



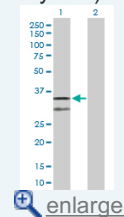
#### Western Blot (Tissue lysate)



#### Western Blot (Cell lysate)



#### Western Blot (Transfected lysate)

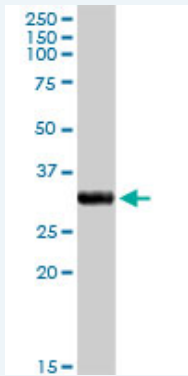


CYC1 MaxPab rabbit polyclonal antibody. Western Blot analysis of CYC1 expression in

human pancreas.

 [Protocol Download](#)

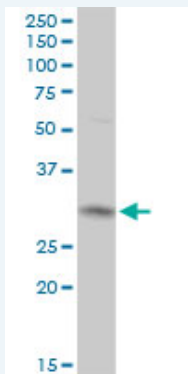
#### Western Blot (Tissue lysate)



CYC1 MaxPab rabbit polyclonal antibody. Western Blot analysis of CYC1 expression in mouse kidney.

 [Protocol Download](#)

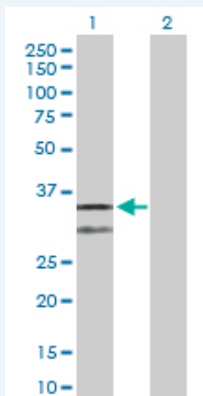
#### Western Blot (Cell lysate)



CYC1 MaxPab rabbit polyclonal antibody. Western Blot analysis of CYC1 expression in A-431.

 [Protocol Download](#)

#### Western Blot (Transfected lysate)



Western Blot analysis of CYC1 expression in transfected 293T cell line ([H00001537-T02](#)) by CYC1 MaxPab polyclonal antibody.

Lane 1: CYC1 transfected lysate(35.40 KDa).

Lane 2: Non-transfected lysate.

 [Protocol Download](#)

#### Gene Information

Entrez GeneID: [1537](#)

GeneBank [NM\\_001916](#)

Accession#:

**Protein** [NP\\_001907.2](#)

**Accession#:**

**Gene Name:** [CYC1](#)

**Gene Alias:** [UQCR4](#)

**Gene** [cytochrome c-1](#)

**Description:**

**Omim ID:** [123980](#)

**Gene Ontology:** [Hyperlink](#)

**Other** -

**Designations:**

### **Gene Pathway**

[Alzheimer's disease](#) [Cardiac muscle contraction](#) [Huntington's disease](#) [Metabolic pathways](#)  
[Oxidative phosphorylation](#) [Parkinson's disease](#)

### **Related Disease**

[Genetic Predisposition to Disease](#) [Ovarian Neoplasms](#)

[服務條款](#) | [隱私權政策](#) | [著作及商標](#) | [網站地圖](#)

©2016 亞諾法生技股份有限公司 Abnova Corporation. 版權所有.