



# SZABO SCANDIC

Part of Europa Biosite

## Produktinformation



Forschungsprodukte & Biochemikalien



Zellkultur & Verbrauchsmaterial



Diagnostik & molekulare Diagnostik



Laborgeräte & Service

Weitere Information auf den folgenden Seiten!  
See the following pages for more information!



### Lieferung & Zahlungsart

siehe unsere [Liefer- und Versandbedingungen](#)

### Zuschläge

- Mindermengenzuschlag
- Trockeneiszuschlag
- Gefahrgutzuschlag
- Expressversand

### SZABO-SCANDIC HandelsgmbH

Quellenstraße 110, A-1100 Wien

T. +43(0)1 489 3961-0

F. +43(0)1 489 3961-7

[mail@szabo-scandic.com](mailto:mail@szabo-scandic.com)

[www.szabo-scandic.com](http://www.szabo-scandic.com)

[linkedin.com/company/szaboscandic](https://www.linkedin.com/company/szaboscandic) 

# CYLC2 MaxPab mouse polyclonal antibody (B01) MaxPab®

Catalog # : H00001539-B01

規格 : [ 50 uL ]

[List All](#)

## Specification

**Product Description:** Mouse polyclonal antibody raised against a full-length human CYLC2 protein.

**Immunogen:** CYLC2 (NP\_001331.1, 1 a.a. ~ 348 a.a) full-length human protein.

**Sequence:**  
 MSLPRFQRVNFGPYDNYIPVSELSKKSQWQQHFALLFPKPQRPQGTGKRR  
 SKPSQIRDNTVSIIDEEQLRGDRRQPLWMYRSLMRISERPSVYLAARRQP  
 LKPTRTVEVDSKAAEIGKKGEDKTTQKDTTDESELKQGKKDSKGGKDI  
 EKGKEEKLDKAKDSKGGKDAEKGKDSATESEDEKGGAKKDNKKDKD  
 SNKGKDSATESEGEKGGTEKDSKGGKDSKGGKDSAIELQAVKADEKDD  
 EDGKDKANKGDESKDAKKDAKEIKKGGKDKKKPSSTSDSKDDVKKESK  
 KDATKDAKKVAKKDEKESADSKKDAKKNKAKDAKKDAKKNKAKKDEKDD  
 AKKGGK

**Host:** Mouse

**Reactivity:** Human

**Quality Control Testing:** Antibody reactive against mammalian transfected lysate.

**Storage Buffer:** No additive

**Storage Instruction:** Store at -20°C or lower. Aliquot to avoid repeated freezing and thawing.

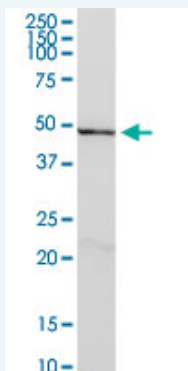
**Note:** For IHC and IF applications, antibody purification with Protein A will be needed prior to use.

**MSDS:** [Download](#)

**Datasheet:** [Download](#)

## Applications

### Western Blot (Tissue lysate)

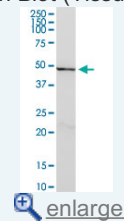


CYLC2 MaxPab polyclonal antibody. Western Blot analysis of CYLC2 expression in human spleen.

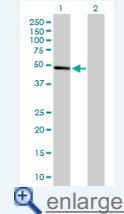
[Protocol Download](#)

## Application Image

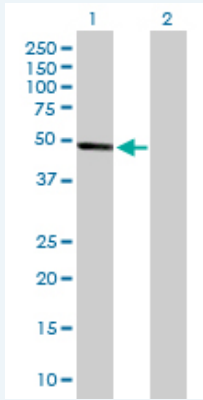
### Western Blot (Tissue lysate)



### Western Blot (Transfected lysate)



### Western Blot (Transfected lysate)



Western Blot analysis of CYLC2 expression in transfected 293T cell line ([H00001539-T02](#)) by CYLC2 MaxPab polyclonal antibody.

Lane 1: CYLC2 transfected lysate(39.10 KDa).

Lane 2: Non-transfected lysate.

 [Protocol Download](#)

### Gene Information

**Entrez GeneID:** [1539](#)

**GeneBank Accession#:** [NM\\_001340.2](#)

**Protein Accession#:** [NP\\_001331.1](#)

**Gene Name:** CYLC2

**Gene Alias:** MGC129591

**Gene Description:** [cylicin, basic protein of sperm head cytoskeleton 2](#)

**Omim ID:** [604035](#)

**Gene Ontology:** [Hyperlink](#)

**Gene Summary:** Cylicin II (CYCL2) is specifically expressed in testis and is part of the cytoskeletal calyx of mammalian sperm heads. Cylicin II may play a role in the morphogenesis of the sperm head. [provided by RefSeq]

**Other Designations:** [cylicin 2](#)

### Related Disease

[Cleft Lip](#) [Cleft Palate](#) [Genetic Predisposition to Disease](#) [Narcolepsy](#) [Tooth Abnormalities](#)

[服務條款](#) | [隱私權政策](#) | [著作及商標](#) | [網站地圖](#)

©2016 亞諾法生技股份有限公司 Abnova Corporation. 版權所有.