



SZABO SCANDIC

Part of Europa Biosite

Produktinformation



Forschungsprodukte & Biochemikalien



Zellkultur & Verbrauchsmaterial



Diagnostik & molekulare Diagnostik



Laborgeräte & Service

Weitere Information auf den folgenden Seiten!
See the following pages for more information!



Lieferung & Zahlungsart

siehe unsere [Liefer- und Versandbedingungen](#)

Zuschläge

- Mindermengenzuschlag
- Trockeneiszuschlag
- Gefahrgutzuschlag
- Expressversand

SZABO-SCANDIC HandelsgmbH

Quellenstraße 110, A-1100 Wien

T. +43(0)1 489 3961-0

F. +43(0)1 489 3961-7

mail@szabo-scandic.com

www.szabo-scandic.com

[linkedin.com/company/szaboscandic](https://www.linkedin.com/company/szaboscandic) 

CYLD monoclonal antibody (M01), clone 2C3

Catalog # : H00001540-M01

規格 : [100 ug]

[List All](#)

Specification

Product Description: Mouse monoclonal antibody raised against a partial recombinant CYLD.

Immunogen: CYLD (AAH12342, 854 a.a. ~ 953 a.a) partial recombinant protein with GST tag. MW of the GST tag alone is 26 KDa.

Sequence: QNMELFAVLCIETSHYVAFVKYKDDSAWLFFDSMADRDGGQNGFNIP
QVTPCPEVGEYKMSLEDLHSLDSRRIQGCARRLLCDAYMCMYQSPTM
SLYK

Host: Mouse

Reactivity: Human

Isotype: IgG2a Kappa

Quality Control Testing: Antibody Reactive Against Recombinant Protein.

Storage Buffer: In 1x PBS, pH 7.4

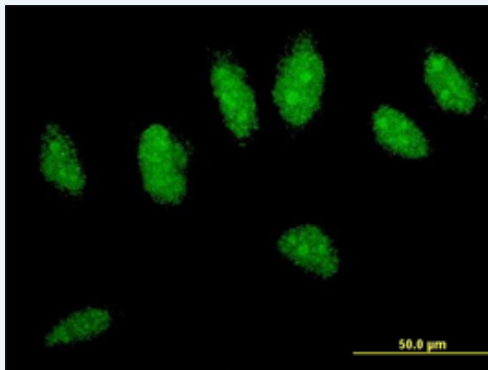
Storage Instruction: Store at -20°C or lower. Aliquot to avoid repeated freezing and thawing.


MSDS:  [Download](#)

Datasheet:  [Download](#)


Applications

Immunofluorescence



 [enlarge this image](#)

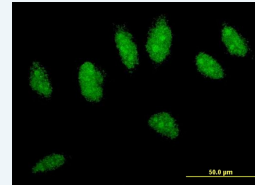
Immunofluorescence of monoclonal antibody to CYLD on HeLa cell . [antibody concentration 10 ug/ml]

 [Protocol Download](#)

Sandwich ELISA (Recombinant protein)

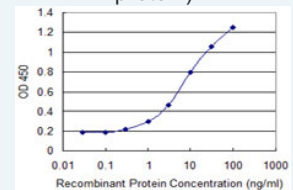
Application Image

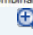
Immunofluorescence



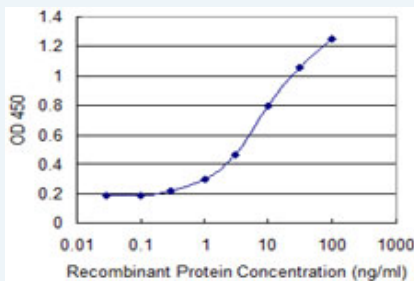
 [enlarge](#)

Sandwich ELISA (Recombinant protein)



 [enlarge](#)

ELISA



Detection limit for recombinant GST tagged CYLD is 0.1 ng/ml as a capture antibody.

 [Protocol Download](#)

ELISA

Gene Information

Entrez GeneID: [1540](#)

GeneBank [BC012342](#)

Accession#:

Protein [AAH12342](#)

Accession#:

Gene Name: CYLD

Gene Alias: CDMT, CYLD1, CYLDI, EAC, FLJ20180, FLJ31664, FLJ78684, HSPC057, KIAA0849, MFT, MFT1, SBS, TEM, USPL2

Gene Description: cylindromatosis (turban tumor syndrome)

Omim ID: [132700](#), [605018](#)

Gene Ontology: [Hyperlink](#)

Gene Summary: This gene encodes a cytoplasmic protein with three cytoskeletal-associated protein-glycine-conserved (CAP-GLY) domains that functions as a deubiquitinating enzyme. Mutations in this gene have been associated with cylindromatosis, multiple familial trichoepithelioma, and Brooke-Spiegler syndrome. Alternate transcriptional splice variants, encoding different isoforms, have been characterized. [provided by RefSeq]

Other Designations: deubiquitinating enzyme CYLD, ubiquitin carboxyl-terminal hydrolase CYLD, ubiquitin specific peptidase like 2, ubiquitin thiolesterase CYLD, ubiquitin-specific-processing protease CYLD

Related Disease

[Cardiovascular Diseases](#) [Diabetes Mellitus, Type 2](#) [Edema](#)