



# SZABO SCANDIC

Part of Europa Biosite

## Produktinformation



Forschungsprodukte & Biochemikalien



Zellkultur & Verbrauchsmaterial



Diagnostik & molekulare Diagnostik



Laborgeräte & Service

Weitere Information auf den folgenden Seiten!  
See the following pages for more information!



### Lieferung & Zahlungsart

siehe unsere [Liefer- und Versandbedingungen](#)

### Zuschläge

- Mindermengenzuschlag
- Trockeneiszuschlag
- Gefahrgutzuschlag
- Expressversand

### SZABO-SCANDIC HandelsgmbH

Quellenstraße 110, A-1100 Wien

T. +43(0)1 489 3961-0

F. +43(0)1 489 3961-7

[mail@szabo-scandic.com](mailto:mail@szabo-scandic.com)

[www.szabo-scandic.com](http://www.szabo-scandic.com)

[linkedin.com/company/szaboscandic](https://www.linkedin.com/company/szaboscandic) 

## CYLD monoclonal antibody (M02), clone 3A9

Catalog # : H00001540-M02

規格 : [ 100 ug ]

[List All](#)

### Specification

**Product Description:** Mouse monoclonal antibody raised against a partial recombinant CYLD.

**Immunogen:** CYLD (AAH12342, 854 a.a. ~ 953 a.a) partial recombinant protein with GST tag. MW of the GST tag alone is 26 KDa.

**Sequence:** QNMELFAVLCIETSHYVAFVKYKDDSAWLFFDSMADRDGGQNGFNIP  
QVTPCPEVGEYKMSLEDLHSLDSRRIQGCARRLLCDAYMCMYQSPTM  
SLYK

**Host:** Mouse

**Reactivity:** Human

**Isotype:** IgG2b Kappa

**Quality Control Testing:** Antibody Reactive Against Recombinant Protein.

**Storage Buffer:** In 1x PBS, pH 7.4

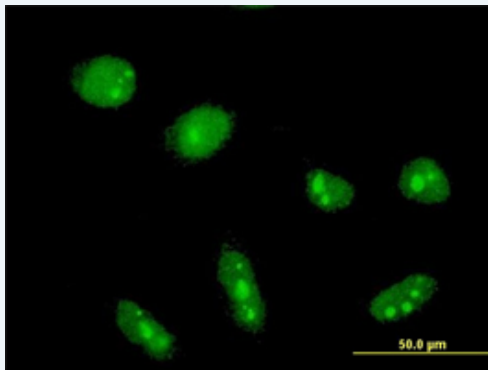
**Storage Instruction:** Store at -20°C or lower. Aliquot to avoid repeated freezing and thawing.


**MSDS:**  [Download](#)

**Datasheet:**  [Download](#)


### Applications

#### Immunofluorescence



 [enlarge this image](#)

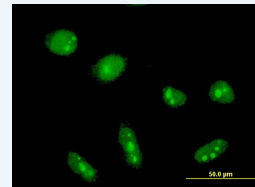
Immunofluorescence of monoclonal antibody to CYLD on HeLa cell . [antibody concentration 10 ug/ml]


 [Protocol Download](#)

#### Sandwich ELISA (Recombinant protein)

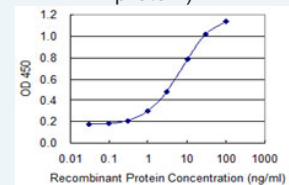
### Application Image

#### Immunofluorescence



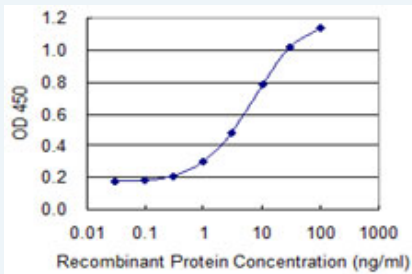
 [enlarge](#)

#### Sandwich ELISA (Recombinant protein)



 [enlarge](#)

ELISA



Detection limit for recombinant GST tagged CYLD is 0.1 ng/ml as a capture antibody.

 [Protocol Download](#)

## ELISA

### Gene Information

**Entrez GeneID:** [1540](#)

**GeneBank** [BC012342](#)

**Accession#:**

**Protein** [AAH12342](#)

**Accession#:**

**Gene Name:** CYLD

**Gene Alias:** CDMT, CYLD1, CYLDI, EAC, FLJ20180, FLJ31664, FLJ78684, HSPC057, KIAA0849, MFT, MFT1, SBS, TEM, USPL2

**Gene Description:** cylindromatosis (turban tumor syndrome)

**Omim ID:** [132700](#), [605018](#)

**Gene Ontology:** [Hyperlink](#)

**Gene Summary:** This gene encodes a cytoplasmic protein with three cytoskeletal-associated protein-glycine-conserved (CAP-GLY) domains that functions as a deubiquitinating enzyme. Mutations in this gene have been associated with cylindromatosis, multiple familial trichoepithelioma, and Brooke-Spiegler syndrome. Alternate transcriptional splice variants, encoding different isoforms, have been characterized. [provided by RefSeq]

**Other Designations:** deubiquitinating enzyme CYLD, ubiquitin carboxyl-terminal hydrolase CYLD, ubiquitin specific peptidase like 2, ubiquitin thiolesterase CYLD, ubiquitin-specific-processing protease CYLD

### Related Disease

[Cardiovascular Diseases](#) [Diabetes Mellitus, Type 2](#) [Edema](#)