



SZABO SCANDIC

Part of Europa Biosite

Produktinformation



Forschungsprodukte & Biochemikalien



Zellkultur & Verbrauchsmaterial



Diagnostik & molekulare Diagnostik



Laborgeräte & Service

Weitere Information auf den folgenden Seiten!
See the following pages for more information!



Lieferung & Zahlungsart

siehe unsere [Liefer- und Versandbedingungen](#)

Zuschläge

- Mindermengenzuschlag
- Trockeneiszuschlag
- Gefahrgutzuschlag
- Expressversand

SZABO-SCANDIC HandelsgmbH

Quellenstraße 110, A-1100 Wien

T. +43(0)1 489 3961-0

F. +43(0)1 489 3961-7

mail@szabo-scandic.com

www.szabo-scandic.com

[linkedin.com/company/szaboscandic](https://www.linkedin.com/company/szaboscandic) 

CYP1A1 purified MaxPab rabbit polyclonal antibody (D01P) MaxPab®

Catalog # : H00001543-D01P

規格 : [100 ug]

[List All](#)

Specification

Product Description: Rabbit polyclonal antibody raised against a full-length human CYP1A1 protein.

Immunogen: CYP1A1 (NP_000490.1, 1 a.a. ~ 512 a.a) full-length human protein.

Sequence:
 MLFPISMSATEFLLASVIFCLVFWIRASRPQVPKGLKNPPGPWGWPLIG
 HMLTLGKNPHLALSRMSQQYGDVLQIRIGSTPVVLSGLDTIRQALVRQG
 DDFKGRPDLYFTLISNGQSMSFSPDSGPWAAARRRLAQNGLKSFASIAS
 DPASSTSCYLEEHVSKEAEVLISLQELMAGPGHFNPYRYVVSVTNVIC
 AICFGRRYDHNHQELLSLVNLNNNFGEVVGSGNPADFIPILRYLPNPSLNA
 FKDLNEKFYSFMQKMKVKEHYKTFEKGHIRDITDSLIEHCQEKL DENANV
 QLSDEKIINVLDFGAGFDTVTTAISWSLMYLVMNPRVQRKIQEELDTVIG
 RRRRPRLSDRSHLPYMEAFILETFRHSSFVPFTIPHSTTRDTSLKGFYIPK
 GRCVFNQWQINHDQKLWVNPSEFLPERFLTPDGAIKVLSEKVIIFGMG
 KRKICIGETIARWEVFLFLAILLQRVEFSVPLGVKVDMTPIYGLTMKHACCE
 HFQMQLRS

Host: Rabbit

Reactivity: Human

Quality Control Testing: Antibody reactive against mammalian transfected lysate.

Storage Buffer: In 1x PBS, pH 7.4

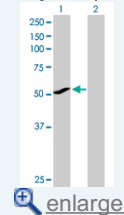
Storage Instruction: Store at -20°C or lower. Aliquot to avoid repeated freezing and thawing.

MSDS: [Download](#)

Datasheet: [Download](#)

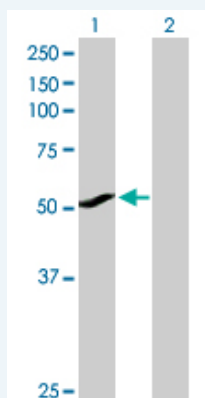
Application Image

Western Blot (Transfected lysate)



Applications

Western Blot (Transfected lysate)



Western Blot analysis of CYP1A1 expression in transfected 293T cell line (H00001543-T02) by CYP1A1 MaxPab polyclonal antibody.

Lane 1: CYP1A1 transfected lysate(58.20 KDa).

Gene Information

Entrez GeneID: [1543](#)

GeneBank Accession#: [NM_000499.2](#)

Protein Accession#: [NP_000490.1](#)

Gene Name: CYP1A1

Gene Alias: AHH,AHRR,CP11,CYP1,P1-450,P450-C,P450DX

Gene Description: cytochrome P450, family 1, subfamily A, polypeptide 1

Omim ID: [108330](#)

Gene Ontology: [Hyperlink](#)

Gene Summary: This gene, CYP1A1, encodes a member of the cytochrome P450 superfamily of enzymes. The cytochrome P450 proteins are monooxygenases which catalyze many reactions involved in drug metabolism and synthesis of cholesterol, steroids and other lipids. This protein localizes to the endoplasmic reticulum and its expression is induced by some polycyclic aromatic hydrocarbons (PAHs), some of which are found in cigarette smoke. The enzyme's endogenous substrate is unknown; however, it is able to metabolize some PAHs to carcinogenic intermediates. The gene has been associated with lung cancer risk. A related family member, CYP1A2, is located approximately 25 kb away from CYP1A1 on chromosome 15. [provided by RefSeq]

Other Designations: aryl hydrocarbon hydroxylase,cytochrome P1-450, dioxin-inducible,cytochrome P450 1A1,cytochrome P450, subfamily I (aromatic compound-inducible), polypeptide 1,flavoprotein-linked monooxygenase,xenobiotic monooxygenase

Gene Pathway

[Metabolism of xenobiotics by cytochrome P450](#) [Retinol metabolism](#) [Tryptophan metabolism](#)

Related Disease

[Abortion, Habitual](#) [Acute Disease](#) [Adenocarcinoma](#) [Adenocarcinoma, Clear Cell](#) [Adenocarcinoma, Mucinous](#) [Adenoma](#) [Adenoma, Liver Cell](#) [Alcoholism](#) [Alcohol-Related Disorders](#) [Alzheimer Disease](#) [Alzheimer disease](#) [Amyotrophic Lateral Sclerosis](#) [Amyotrophic lateral sclerosis](#) [Anemia, Aplastic](#) [Anemia, Iron-Deficiency](#) [Arteriosclerosis](#) [Arthritis, Psoriatic](#) [Arthritis, Reactive](#) [Arthritis, Rheumatoid](#)

... see more