



SZABO SCANDIC

Part of Europa Biosite

Produktinformation



Forschungsprodukte & Biochemikalien



Zellkultur & Verbrauchsmaterial



Diagnostik & molekulare Diagnostik



Laborgeräte & Service

Weitere Information auf den folgenden Seiten!
See the following pages for more information!



Lieferung & Zahlungsart

siehe unsere [Liefer- und Versandbedingungen](#)

Zuschläge

- Mindermengenzuschlag
- Trockeneiszuschlag
- Gefahrgutzuschlag
- Expressversand

SZABO-SCANDIC HandelsgmbH

Quellenstraße 110, A-1100 Wien

T. +43(0)1 489 3961-0

F. +43(0)1 489 3961-7

mail@szabo-scandic.com

www.szabo-scandic.com

[linkedin.com/company/szaboscandic](https://www.linkedin.com/company/szaboscandic) 

CYP1A1 (Human) IP-WB Antibody Pair

Catalog # : H00001543-PW1

規格 : [1 Set]

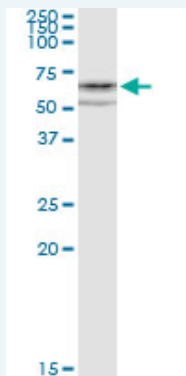
[List All](#)

Specification

Product Description: This IP-WB antibody pair set comes with one antibody for immunoprecipitation and another to detect the precipitated protein in western blot.

Reactivity: Human

Quality Control Testing: Immunoprecipitation-Western Blot (IP-WB)



Immunoprecipitation of CYP1A1 transfected lysate using rabbit polyclonal anti-CYP1A1 and Protein A Magnetic Bead (U0007), and immunoblotted with mouse purified polyclonal anti-CYP1A1.

Supplied Product: Antibody pair set content:
 1. Antibody pair for IP: rabbit polyclonal anti-CYP1A1 (300 ul)
 2. Antibody pair for WB: mouse purified polyclonal anti-CYP1A1 (50 ug)

Storage Instruction: Store reagents of the antibody pair set at -20°C or lower. Please aliquot to avoid repeated freeze thaw cycle. Reagents should be returned to -20°C storage immediately after use.

MSDS:  [Download](#)

Applications

Immunoprecipitation-Western Blot

 [Protocol Download](#)

Gene Information

Entrez GeneID: [1543](#)

Gene Name: CYP1A1

Gene Alias: AHH,AHRR,CP11,CYP1,P1-450,P450-C,P450DX

Gene Description: cytochrome P450, family 1, subfamily A, polypeptide 1

Omim ID: [108330](#)

Gene Ontology: [Hyperlink](#)

Application Image

Immunoprecipitation-Western Blot

Gene Summary: This gene, CYP1A1, encodes a member of the cytochrome P450 superfamily of enzymes. The cytochrome P450 proteins are monooxygenases which catalyze many reactions involved in drug metabolism and synthesis of cholesterol, steroids and other lipids. This protein localizes to the endoplasmic reticulum and its expression is induced by some polycyclic aromatic hydrocarbons (PAHs), some of which are found in cigarette smoke. The enzyme's endogenous substrate is unknown; however, it is able to metabolize some PAHs to carcinogenic intermediates. The gene has been associated with lung cancer risk. A related family member, CYP1A2, is located approximately 25 kb away from CYP1A1 on chromosome 15. [provided by RefSeq]

Other Designations: aryl hydrocarbon hydroxylase, cytochrome P1-450, dioxin-inducible, cytochrome P450 1A1, cytochrome P450, subfamily I (aromatic compound-inducible), polypeptide 1, flavoprotein-linked monooxygenase, xenobiotic monooxygenase

Gene Pathway

[Metabolism of xenobiotics by cytochrome P450](#) [Retinol metabolism](#) [Tryptophan metabolism](#)

Related Disease

[Abortion, Habitual](#) [Acute Disease](#) [Adenocarcinoma](#) [Adenocarcinoma, Clear Cell](#) [Adenocarcinoma, Mucinous](#) [Adenoma](#) [Adenoma, Liver Cell](#) [Alcoholism](#) [Alcohol-Related Disorders](#) [Alzheimer Disease](#) [Alzheimer disease](#) [Amyotrophic Lateral Sclerosis](#) [Amyotrophic lateral sclerosis](#) [Anemia](#) [Aplastic Anemia](#) [Anemia, Iron-Deficiency](#) [Arteriosclerosis](#) [Arthritis](#) [Psoriatic Arthritis](#) [Reactive Arthritis](#) [Rheumatoid](#)

... see more

[服務條款](#) | [隱私權政策](#) | [著作及商標](#) | [網站地圖](#)

©2016 亞諾法生技股份有限公司 Abnova Corporation. 版權所有.