



# SZABO SCANDIC

Part of Europa Biosite

## Produktinformation



Forschungsprodukte & Biochemikalien



Zellkultur & Verbrauchsmaterial



Diagnostik & molekulare Diagnostik



Laborgeräte & Service

Weitere Information auf den folgenden Seiten!  
See the following pages for more information!



### Lieferung & Zahlungsart

siehe unsere [Liefer- und Versandbedingungen](#)

### Zuschläge

- Mindermengenzuschlag
- Trockeneiszuschlag
- Gefahrgutzuschlag
- Expressversand

### SZABO-SCANDIC HandelsgmbH

Quellenstraße 110, A-1100 Wien

T. +43(0)1 489 3961-0

F. +43(0)1 489 3961-7

[mail@szabo-scandic.com](mailto:mail@szabo-scandic.com)

[www.szabo-scandic.com](http://www.szabo-scandic.com)

[linkedin.com/company/szaboscandic](https://www.linkedin.com/company/szaboscandic) 



## CYP1A2 purified MaxPab rabbit polyclonal antibody (D01P) MaxPab®

Catalog # : H00001544-D01P

規格 : [ 100 ug ]

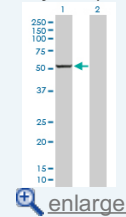
[List All](#)

### Specification

<b>Product Description:</b>	Rabbit polyclonal antibody raised against a full-length human CYP1A2 protein.
<b>Immunogen:</b>	CYP1A2 (AAH67427.1, 1 a.a. ~ 516 a.a) full-length human protein.
<b>Sequence:</b>	MALSQSVPFSAPELLLSAIFCLVFWLKGRLRPRVPKGLKSPPEPWGWP LLGHVLTGKNPHLALSRMSQRYGDVLQIRIDSTPVLVLSRLDTIRQALVR QGDDFKGRPDLYTSTLITDGQSLTFSTDSGPWAAARRRLAQNALNTFSI ASDPASSSSCYLEEHVSKEAKALISRLQELMAGPGHFDYPNQVVVSVANV IGAMCFGQHFPESSDEMLSLVKNTHEFVETASSGNPLDFFPILRYLPNPA LQRFKAFNQRFWFLQKTVQEHYQDFDKNSVRDITGALFKHSKKGPRAS SGNLIPQEKIVNLVNDIFGAGFDTVTTAISWSLMYLVTKPEIQRKIQKELDT VIGRERRPRLSDRPQLPYLEAFILETFRHSSFLPFTIPHSTTRDITLNGFYI PKKCCVFVNQWQVNHDPPELWEDPSEFRPERFLTADGTAINKPLSEKMM LFGMGKRRRCIGEVLAKEIFLFLAILLQQLEFSVPPGVKVDLTPYGLTMK HARCEHVQARLRFSIN
<b>Host:</b>	Rabbit
<b>Reactivity:</b>	Human
<b>Quality Control Testing:</b>	Antibody reactive against mammalian transfected lysate.
<b>Storage Buffer:</b>	In 1x PBS, pH 7.4
<b>Storage Instruction:</b>	Store at -20°C or lower. Aliquot to avoid repeated freezing and thawing.
<b>MSDS:</b>	 <a href="#">Download</a>
<b>Datasheet:</b>	 <a href="#">Download</a>

### Application Image

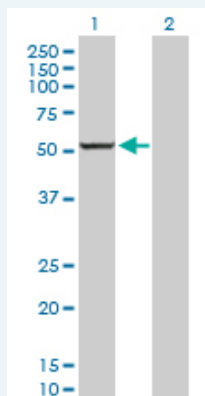
Western Blot (Transfected lysate)



 enlarge

### Applications

#### Western Blot (Transfected lysate)



Western Blot analysis of CYP1A2 expression in transfected 293T cell line (H00001544-T02) by CYP1A2 MaxPab polyclonal antibody.

Lane 1: CYP1A2 transfected lysate(58.50 kDa).

## Gene Information

**Entrez GeneID:** [1544](#)

**GeneBank Accession#:** [BC067427.1](#)

**Protein Accession#:** [AAH67427.1](#)

**Gene Name:** CYP1A2

**Gene Alias:** CP12,P3-450,P450(PA)

**Gene Description:** cytochrome P450, family 1, subfamily A, polypeptide 2

**Omim ID:** [124060](#)

**Gene Ontology:** [Hyperlink](#)

**Gene Summary:** This gene encodes a member of the cytochrome P450 superfamily of enzymes. The cytochrome P450 proteins are monooxygenases which catalyze many reactions involved in drug metabolism and synthesis of cholesterol, steroids and other lipids. The protein encoded by this gene localizes to the endoplasmic reticulum and its expression is induced by some polycyclic aromatic hydrocarbons (PAHs), some of which are found in cigarette smoke. The enzyme's endogenous substrate is unknown; however, it is able to metabolize some PAHs to carcinogenic intermediates. Other xenobiotic substrates for this enzyme include caffeine, aflatoxin B1, and acetaminophen. The transcript from this gene contains four Alu sequences flanked by direct repeats in the 3' untranslated region. [provided by RefSeq]

**Other Designations:** P450 form 4,aryl hydrocarbon hydroxylase,cytochrome P450, subfamily I (aromatic compound-inducible), polypeptide 2,dioxin-inducible P3-450,flavoprotein-linked monooxygenase,microsomal monooxygenase,xenobiotic monooxygenase

## Gene Pathway

[Caffeine metabolism](#) [Drug metabolism - cytochrome P450](#) [Linoleic acid metabolism](#)  
[Metabolic pathways](#) [Metabolism of xenobiotics by cytochrome P450](#) [Retinol metabolism](#)  
[Tryptophan metabolism](#)

## Related Disease

[Abortion, Habitual](#) [Adenocarcinoma](#) [Adenoma](#) [Adenoma, Liver Cell](#)  
[Amyotrophic Lateral Sclerosis](#) [Amyotrophic lateral sclerosis](#) [Arrhythmia](#)  
[Arthritis, Rheumatoid](#) [Asthma](#) [Asthma Attention](#) [Breast cancer](#) [Breast Neoplasms](#)  
[Carcinoma, Hepatocellular](#) [Carcinoma, Pancreatic Ductal](#) [Carcinoma, Renal Cell](#)  
[Carcinoma, Squamous Cell](#) [Carcinoma, Transitional Cell](#) [Cardiovascular Diseases](#)

... see more