



SZABO SCANDIC

Part of Europa Biosite

Produktinformation



Forschungsprodukte & Biochemikalien



Zellkultur & Verbrauchsmaterial



Diagnostik & molekulare Diagnostik



Laborgeräte & Service

Weitere Information auf den folgenden Seiten!
See the following pages for more information!



Lieferung & Zahlungsart

siehe unsere [Liefer- und Versandbedingungen](#)

Zuschläge

- Mindermengenzuschlag
- Trockeneiszuschlag
- Gefahrgutzuschlag
- Expressversand

SZABO-SCANDIC HandelsgmbH

Quellenstraße 110, A-1100 Wien

T. +43(0)1 489 3961-0

F. +43(0)1 489 3961-7

mail@szabo-scandic.com

www.szabo-scandic.com

[linkedin.com/company/szaboscandic](https://www.linkedin.com/company/szaboscandic) 

CYP1A2 monoclonal antibody (M10), clone 3D2

Catalog # : H00001544-M10

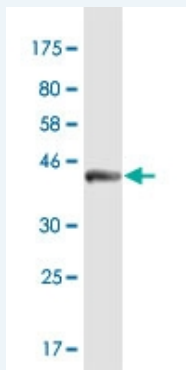
規格 : [100 ug]

[List All](#)

Specification

Product Description:	Mouse monoclonal antibody raised against a partial recombinant CYP1A2.
Immunogen:	CYP1A2 (NP_000752, 211 a.a. ~ 310 a.a) partial recombinant protein with GST tag. MW of the GST tag alone is 26 KDa.
Sequence:	ESSDEMLSLVKNTHFVETASSGNPLDFFPILRYLPNPALQRFKAFNQRF LWFLQKTVQEHYQDFDKNSVRDITGALFKHKKGPRASGNLIPQEKIVNL
Host:	Mouse
Reactivity:	Human
Isotype:	IgG3 Kappa

Quality Control Testing: Antibody Reactive Against Recombinant Protein.



Western Blot detection against Immunogen (36.74 KDa) .

Storage Buffer: In 1x PBS, pH 7.4

Storage Instruction: Store at -20°C or lower. Aliquot to avoid repeated freezing and thawing.

MSDS: [Download](#)

Datasheet: [Download](#)

Applications

Western Blot (Recombinant protein)

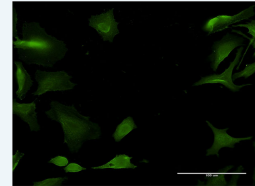
[Protocol Download](#)

Immunofluorescence

Application Image

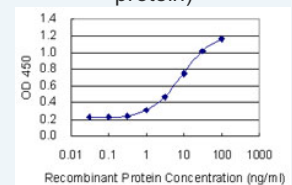
Western Blot (Recombinant protein)

Immunofluorescence



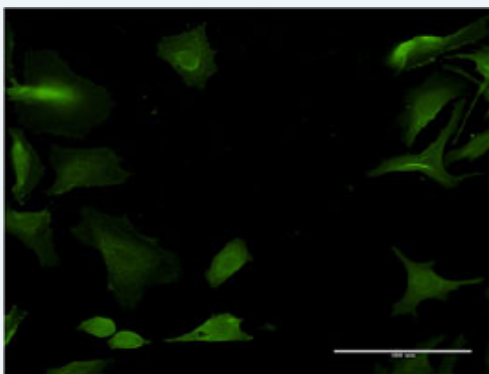
[enlarge](#)

Sandwich ELISA (Recombinant protein)



[enlarge](#)

ELISA

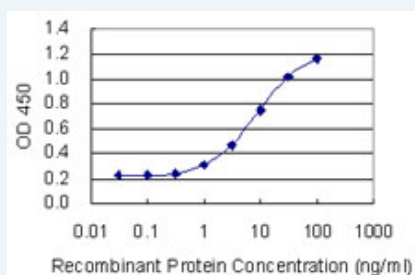


[enlarge this image](#)

Immunofluorescence of monoclonal antibody to CYP1A2 on HeLa cell . [antibody concentration 10 ug/ml]

[Protocol Download](#)

Sandwich ELISA (Recombinant protein)



Detection limit for recombinant GST tagged CYP1A2 is 0.3 ng/ml as a capture antibody.

[Protocol Download](#)

ELISA

Gene Information

Entrez GeneID: [1544](#)

GeneBank [NM_000761](#)
Accession#:

Protein [NP_000752](#)
Accession#:

Gene Name: CYP1A2

Gene Alias: CP12,P3-450,P450(PA)

Gene Description: cytochrome P450, family 1, subfamily A, polypeptide 2

Omim ID: [124060](#)

Gene Ontology: [Hyperlink](#)

Gene Summary: This gene encodes a member of the cytochrome P450 superfamily of enzymes. The cytochrome P450 proteins are monooxygenases which catalyze many reactions involved in drug metabolism and synthesis of cholesterol, steroids and other lipids. The protein encoded by this gene localizes to the endoplasmic reticulum and its expression is induced by some polycyclic aromatic hydrocarbons (PAHs), some of which are found in cigarette smoke. The enzyme's endogenous substrate is unknown; however, it is able to metabolize some PAHs to carcinogenic intermediates. Other xenobiotic substrates for this enzyme include caffeine, aflatoxin B1, and acetaminophen. The transcript from this gene contains four Alu sequences flanked by direct repeats in the 3' untranslated region. [provided by RefSeq]

Other P450 form 4,aryl hydrocarbon hydroxylase,cytochrome P450, subfamily
Designations: I (aromatic compound-inducible), polypeptide 2,dioxin-inducible P3-450,flavoprotein-linked monooxygenase,microsomal monooxygenase,xenobiotic monooxygenase

Gene Pathway

[Caffeine metabolism](#) [Drug metabolism - cytochrome P450](#) [Linoleic acid metabolism](#)
[Metabolic pathways](#) [Metabolism of xenobiotics by cytochrome P450](#) [Retinol metabolism](#)
[Tryptophan metabolism](#)

Related Disease

[Abortion, Habitual](#) [Adenocarcinoma](#) [Adenoma](#) [Adenoma, Liver Cell](#)
[Amyotrophic Lateral Sclerosis](#) [Amyotrophic lateral sclerosis](#) [Arrhythmia](#)
[Arthritis, Rheumatoid](#) [Asthma](#) [Asthma](#) [Attention](#) [Breast cancer](#) [Breast Neoplasms](#)
[Carcinoma, Hepatocellular](#) [Carcinoma, Pancreatic Ductal](#) [Carcinoma, Renal Cell](#)
[Carcinoma, Squamous Cell](#) [Carcinoma, Transitional Cell](#) [Cardiovascular Diseases](#)

... see more

[服務條款](#) | [隱私權政策](#) | [著作及商標](#) | [網站地圖](#)

©2016 亞諾法生技股份有限公司 Abnova Corporation. 版權所有.