



# SZABO SCANDIC

Part of Europa Biosite

## Produktinformation



Forschungsprodukte & Biochemikalien



Zellkultur & Verbrauchsmaterial



Diagnostik & molekulare Diagnostik



Laborgeräte & Service

Weitere Information auf den folgenden Seiten!  
See the following pages for more information!



### Lieferung & Zahlungsart

siehe unsere [Liefer- und Versandbedingungen](#)

### Zuschläge

- Mindermengenzuschlag
- Trockeneiszuschlag
- Gefahrgutzuschlag
- Expressversand

### SZABO-SCANDIC HandelsgmbH

Quellenstraße 110, A-1100 Wien

T. +43(0)1 489 3961-0

F. +43(0)1 489 3961-7

[mail@szabo-scandic.com](mailto:mail@szabo-scandic.com)

[www.szabo-scandic.com](http://www.szabo-scandic.com)

[linkedin.com/company/szaboscandic](https://www.linkedin.com/company/szaboscandic) 

## CYP1A2 293T Cell Transient Overexpression Lysate(Denatured)

Catalog # : H00001544-T02

規格 : [ 100 uL ]

[List All](#)

### Specification

**Transfected Cell Line:** 293T

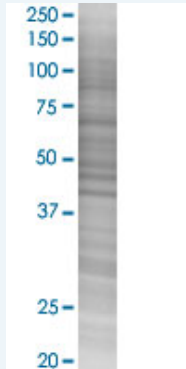
**Plasmid:** pCMV-CYP1A2 full-length

**Host:** Human

**Theoretical MW (kDa):** 58.5

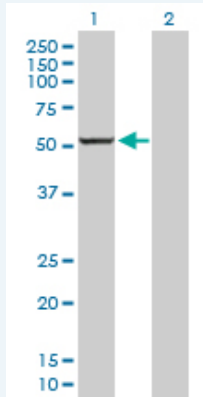
**Quality Control Testing:** Transient overexpression cell lysate was tested with Anti-CYP1A2 antibody ([H00001544-D01P](#)) by Western Blots.

#### SDS-PAGE Gel



CYP1A2 transfected lysate.

#### Western Blot



Lane 1: CYP1A2 transfected lysate ( 58.50 KDa)

Lane 2: Non-transfected lysate.

**Storage Buffer:** 1X Sample Buffer (50 mM Tris-HCl, 2% SDS, 10% glycerol, 300 mM 2-mercaptoethanol, 0.01% Bromophenol blue)

**Storage Instruction:** Store at -80°C. Aliquot to avoid repeated freezing and thawing.

**MSDS:**  [Download](#)

### Applications

### Application Image

Western Blot

## Western Blot

### Gene Information

Entrez GeneID: [1544](#)

GeneBank [BC067427.1](#)  
Accession#:

Protein [AAH67427.1](#)  
Accession#:

Gene Name: CYP1A2

Gene Alias: CP12,P3-450,P450(PA)

Gene Description: cytochrome P450, family 1, subfamily A, polypeptide 2

Omim ID: [124060](#)

Gene Ontology: [Hyperlink](#)

**Gene Summary:** This gene encodes a member of the cytochrome P450 superfamily of enzymes. The cytochrome P450 proteins are monooxygenases which catalyze many reactions involved in drug metabolism and synthesis of cholesterol, steroids and other lipids. The protein encoded by this gene localizes to the endoplasmic reticulum and its expression is induced by some polycyclic aromatic hydrocarbons (PAHs), some of which are found in cigarette smoke. The enzyme's endogenous substrate is unknown; however, it is able to metabolize some PAHs to carcinogenic intermediates. Other xenobiotic substrates for this enzyme include caffeine, aflatoxin B1, and acetaminophen. The transcript from this gene contains four Alu sequences flanked by direct repeats in the 3' untranslated region. [provided by RefSeq]

**Other Designations:** P450 form 4,aryl hydrocarbon hydroxylase,cytochrome P450, subfamily I (aromatic compound-inducible), polypeptide 2,dioxin-inducible P3-450,flavoprotein-linked monooxygenase,microsomal monooxygenase,xenobiotic monooxygenase

### Gene Pathway

[Caffeine metabolism](#) [Drug metabolism - cytochrome P450](#) [Linoleic acid metabolism](#)  
[Metabolic pathways](#) [Metabolism of xenobiotics by cytochrome P450](#) [Retinol metabolism](#)  
[Tryptophan metabolism](#)

### Related Disease

[Abortion, Habitual](#) [Adenocarcinoma](#) [Adenoma](#) [Adenoma, Liver Cell](#)  
[Amyotrophic Lateral Sclerosis](#) [Amyotrophic lateral sclerosis](#) [Arrhythmia](#)  
[Arthritis, Rheumatoid](#) [Asthma](#) [Asthma](#) [Attention](#) [Breast cancer](#) [Breast Neoplasms](#)  
[Carcinoma, Hepatocellular](#) [Carcinoma, Pancreatic Ductal](#) [Carcinoma, Renal Cell](#)  
[Carcinoma, Squamous Cell](#) [Carcinoma, Transitional Cell](#) [Cardiovascular Diseases](#)

... see more