



SZABO SCANDIC

Part of Europa Biosite

Produktinformation



Forschungsprodukte & Biochemikalien



Zellkultur & Verbrauchsmaterial



Diagnostik & molekulare Diagnostik



Laborgeräte & Service

Weitere Information auf den folgenden Seiten!
See the following pages for more information!



Lieferung & Zahlungsart

siehe unsere [Liefer- und Versandbedingungen](#)

Zuschläge

- Mindermengenzuschlag
- Trockeneiszuschlag
- Gefahrgutzuschlag
- Expressversand

SZABO-SCANDIC HandelsgmbH

Quellenstraße 110, A-1100 Wien

T. +43(0)1 489 3961-0

F. +43(0)1 489 3961-7

mail@szabo-scandic.com

www.szabo-scandic.com

[linkedin.com/company/szaboscandic](https://www.linkedin.com/company/szaboscandic) 

CYP2C18 purified MaxPab mouse polyclonal antibody (B01P) MaxPab®

Catalog # : H00001562-B01P

規格 : [50 ug]

[List All](#)

Specification

Product Description: Mouse polyclonal antibody raised against a full-length human CYP2C18 protein.

Immunogen: CYP2C18 (NP_000763.1, 1 a.a. ~ 490 a.a) full-length human protein.

Sequence:
 MDPVALVLCLSLFLLSLWRQSSGRGRLPSPGPTPLPIIGNILQLDVKDM
 SKSLTNFSKVVYGPVFTVYFGLKPIVLHGVEAVKEALIDHGEEFSGRGSF
 PVAEKVNKGLGILFNGKRWKEIRRFCLMLRNFGMGKRSIEDRVQEEA
 RCLVEELRKTNASPCDPTFILGCAPCNVICSVIFHDFRDYKDQRFNLME
 KFNENLRILSSPWIQVCNFPALIDYLPGSHNKIAENFAYIKSYVLERIKEHQ
 ESLDMNSARDFIDCFLIKMEQEKNQSEFTVESLIATVTDMFGAGTETT
 STTLRYGLLLLLKYPEVTAKVQEEIECVVGRNRSRSPCMQDRSHMPYTDV
 VHEIQRYIDLLPTNLPHAVTCDVKFKNYLIPKGTIITSLTSLVHNDKEFPNP
 EMFDPGHFLLDKSGNFKKSDYFMPFSAGKRMCMGEGELARMELFLFTTI
 LQNFNLKSQVDPKIDITPIANAFGRVPPLYQLCFIPV

Host: Mouse

Reactivity: Human

Quality Control Testing: Antibody reactive against mammalian transfected lysate.

Storage Buffer: In 1x PBS, pH 7.4

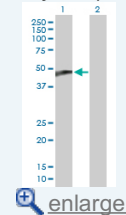
Storage Instruction: Store at -20°C or lower. Aliquot to avoid repeated freezing and thawing.

MSDS:  [Download](#)

Datasheet:  [Download](#)

Application Image

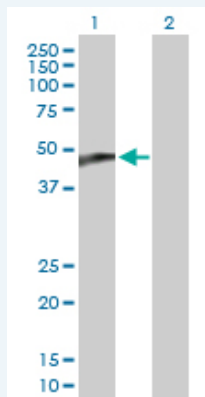
Western Blot (Transfected lysate)



 [enlarge](#)

Applications

Western Blot (Transfected lysate)



Western Blot analysis of CYP2C18 expression in transfected 293T cell line ([H00001562-T01](#)) by CYP2C18 MaxPab polyclonal antibody.

Lane1:CYP2C18 transfected lysate(53.9 KDa).
 Lane2:Non-transfected lysate.

Gene Information

Entrez GeneID: [1562](#)

GeneBank Accession#: [NM_000772.1](#)

Protein Accession#: [NP_000763.1](#)

Gene Name: CYP2C18

Gene Alias: CPCI,CYP2C,CYP2C17,DKFZp686I24235,P450-6B/29C,P450IIC17

Gene Description: cytochrome P450, family 2, subfamily C, polypeptide 18

Omim ID: [601131](#)

Gene Ontology: [Hyperlink](#)

Gene Summary: This gene encodes a member of the cytochrome P450 superfamily of enzymes. The cytochrome P450 proteins are monooxygenases which catalyze many reactions involved in drug metabolism and synthesis of cholesterol, steroids and other lipids. This protein localizes to the endoplasmic reticulum but its specific substrate has not yet been determined. The gene is located within a cluster of cytochrome P450 genes on chromosome 10q24. An additional gene, CYP2C17, was once thought to exist; however, CYP2C17 is now considered an artefact based on a chimera of CYP2C18 and CYP2C19. Alternatively spliced transcript variants encoding different isoforms have been found for this gene. [provided by RefSeq]

Other Designations: (S)-mephenytoin hydroxylase associated cytochrome P450,OTTHUMP00000020131,cytochrome P450 family 2 subfamily C polypeptide 18,cytochrome P450, subfamily IIC (mephenytoin 4-hydroxylase), polypeptide 17,cytochrome P450, subfamily IIC (mephenytoin 4-hydroxyl)

Gene Pathway

[Arachidonic acid metabolism](#) [Drug metabolism - cytochrome P450](#) [Linoleic acid metabolism](#) [Metabolic pathways](#) [Metabolism of xenobiotics by cytochrome P450](#) [Retinol metabolism](#)

Related Disease

[Adenocarcinoma](#) [Alzheimer Disease](#) [Alzheimer disease](#) [Cerebral Amyloid Angiopathy](#) [Coronary Artery Disease](#) [Esophageal Neoplasms](#) [Genetic Predisposition to Disease](#) [Genomic Instability](#) [Kidney Failure, Chronic](#) [Mesothelioma](#) [Neuroblastoma](#) [Pleural Neoplasms](#)