



SZABO SCANDIC

Part of Europa Biosite

Produktinformation



Forschungsprodukte & Biochemikalien



Zellkultur & Verbrauchsmaterial



Diagnostik & molekulare Diagnostik



Laborgeräte & Service

Weitere Information auf den folgenden Seiten!
See the following pages for more information!



Lieferung & Zahlungsart

siehe unsere [Liefer- und Versandbedingungen](#)

Zuschläge

- Mindermengenzuschlag
- Trockeneiszuschlag
- Gefahrgutzuschlag
- Expressversand

SZABO-SCANDIC HandelsgmbH

Quellenstraße 110, A-1100 Wien

T. +43(0)1 489 3961-0

F. +43(0)1 489 3961-7

mail@szabo-scandic.com

www.szabo-scandic.com

[linkedin.com/company/szaboscandic](https://www.linkedin.com/company/szaboscandic) 

CYP2D6 purified MaxPab rabbit polyclonal antibody (D01P) MaxPab®

Catalog # : H00001565-D01P

規格 : [100 ug]

[List All](#)

Specification

Product Description: Rabbit polyclonal antibody raised against a full-length human CYP2D6 protein.

Immunogen: CYP2D6 (AAH75023.1, 1 a.a. ~ 497 a.a) full-length human protein.

Sequence:
 MGLEALVPLAVIVAIFLLLVDLMHRRQRWAARYPPGGLPLPGLGNLLHVD
 FQNTPYCFDQLRRRFQVDFSLQLAWTPVWVNLGLAAVREALVTHGEDT
 ADRPPVPITQILGFGPRSQGVFLARYGPAWREQRRFSVSTLRNLGLGKK
 SLEQWVTEEAACLCAAFANHSRPFRRPNGLLDKAVSNVIASLTCGRRFE
 YDDPRFLRLDLAQEGLKEESGFLREVLNAVPLVLLHIPALAGKVLRFQKA
 FLTQLDELLEHRMTWDPAPPRDLTEAFLAEMEKAKGNPESSFNDENL
 RIVADLF SAGMVTSTT LAWGLLLMILHPDVQRRVQQEIDDVIGQVRRP
 EMGDQAHMPYTTAVIHEVQRF GDIVPLGVTHMTSRDIEVQGFRI PKGTTL
 ITNLSSVLKDEAVWEKPFRRFHPEHFLDAQGHFVKPEAFLPFSAGRRACL
 GEPLARMEFLFFTSLLQHF SFSVPTGQPRPSHHGVFAFLVSPSPYELC
 AVPR

Host: Rabbit

Reactivity: Human

Quality Control Testing: Antibody reactive against mammalian transfected lysate.

Storage Buffer: In 1x PBS, pH 7.4

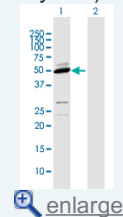
Storage Instruction: Store at -20°C or lower. Aliquot to avoid repeated freezing and thawing.

MSDS: [Download](#)

Datasheet: [Download](#)

Application Image

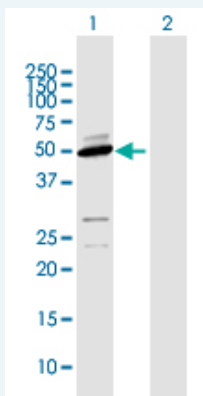
Western Blot (Transfected lysate)



[enlarge](#)

Applications

Western Blot (Transfected lysate)



Western Blot analysis of CYP2D6 expression in transfected 293T cell line (H00001565-T02) by CYP2D6 MaxPab polyclonal antibody.

Lane 1: CYP2D6 transfected lysate(55.80 kDa).

Gene Information

Entrez GeneID: [1565](#)

GeneBank Accession#: [BC075023.2](#)

Protein Accession#: [AAH75023.1](#)

Gene Name: CYP2D6

Gene Alias: CPD6,CYP2D,CYP2D@,CYP2DL1,MGC120389,MGC120390,P450-DB1,P450C2D,P450DB1

Gene Description: cytochrome P450, family 2, subfamily D, polypeptide 6

Omim ID: [124030](#)

Gene Ontology: [Hyperlink](#)

Gene Summary: This gene encodes a member of the cytochrome P450 superfamily of enzymes. The cytochrome P450 proteins are monooxygenases which catalyze many reactions involved in drug metabolism and synthesis of cholesterol, steroids and other lipids. This protein localizes to the endoplasmic reticulum and is known to metabolize as many as 20% of commonly prescribed drugs. Its substrates include debrisoquine, an adrenergic-blocking drug; sparteine and propafenone, both anti-arrhythmic drugs; and amitriptyline, an anti-depressant. The gene is highly polymorphic in the population; certain alleles result in the poor metabolizer phenotype, characterized by a decreased ability to metabolize the enzyme's substrates. The gene is located near two cytochrome P450 pseudogenes on chromosome 22q13.1. Alternatively spliced transcript variants encoding different isoforms have been found for this gene. [provided by RefSeq]

Other Designations: cytochrome P450 2D6,cytochrome P450, subfamily IID (debrisoquine, sparteine, etc., -metabolizing), polypeptide 6,cytochrome P450, subfamily IID (debrisoquine, sparteine, etc., -metabolizing)-like 1,debrisoquine 4-hydroxylase,flavoprotein-linked monooxygen

Gene Pathway

[Biosynthesis of alkaloids derived from shikimate pathway](#)
[Drug metabolism - cytochrome P450](#)

Related Disease

[Abortion](#), [Habitual Acute Disease Adenocarcinoma Adenocarcinoma](#), [Papillary Adenoma Agranulocytosis Akathisia](#), [Drug-Induced Alcohol-Related Disorders Alzheimer Disease Alzheimer disease Amphetamine-Related Disorders Anemia](#), [Sickle Cell Anemia](#), [sickle cell Anxiety Disorders Apnea Arrhythmia Arthritis](#), [Rheumatoid Asthma Asthma](#)

... see more