



# SZABO SCANDIC

Part of Europa Biosite

## Produktinformation



Forschungsprodukte & Biochemikalien



Zellkultur & Verbrauchsmaterial



Diagnostik & molekulare Diagnostik



Laborgeräte & Service

Weitere Information auf den folgenden Seiten!  
See the following pages for more information!



### Lieferung & Zahlungsart

siehe unsere [Liefer- und Versandbedingungen](#)

### Zuschläge

- Mindermengenzuschlag
- Trockeneiszuschlag
- Gefahrgutzuschlag
- Expressversand

### SZABO-SCANDIC HandelsgmbH

Quellenstraße 110, A-1100 Wien

T. +43(0)1 489 3961-0

F. +43(0)1 489 3961-7

[mail@szabo-scandic.com](mailto:mail@szabo-scandic.com)

[www.szabo-scandic.com](http://www.szabo-scandic.com)

[linkedin.com/company/szaboscandic](https://www.linkedin.com/company/szaboscandic) 



## CYP2D6 monoclonal antibody (M07), clone 2C5

產品編號 # : H00001565-M07

規格 : [ 100 ug ]

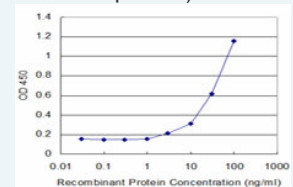
[List All](#)


### Specification

|                                 |  |
|---------------------------------|--|
| <b>Product Description:</b>     | Mouse monoclonal antibody raised against a partial recombinant CYP2D6.   |
| <b>Immunogen:</b>               | CYP2D6 (NP_000097, 91 a.a. ~ 190 a.a) partial recombinant protein with GST tag. MW of the GST tag alone is 26 KDa. |
| <b>Sequence:</b>                | LVTHGEDTADRPPVPITQILGFGPRSQGVFLARYGPAWREQRRFSVSTLRNLGLGKKSLEQWVTEEAACLCAAFANHSRPFRRPNGLLDKAVSNVIASLT               |
| <b>Host:</b>                    | Mouse  |
| <b>Reactivity:</b>              | Human  |
| <b>Isotype:</b>                 | IgG2a Kappa  |
| <b>Quality Control Testing:</b> | Antibody Reactive Against Recombinant Protein.   |
| <b>Storage Buffer:</b>          | In 1x PBS, pH 7.4  |
| <b>Storage Instruction:</b>     | Store at -20°C or lower. Aliquot to avoid repeated freezing and thawing.   |
| <b>MSDS:</b>                    |  <a href="#">Download</a>       |
| <b>Datasheet:</b>               |  <a href="#">Download</a>       |

### Application Image

Sandwich ELISA (Recombinant protein)

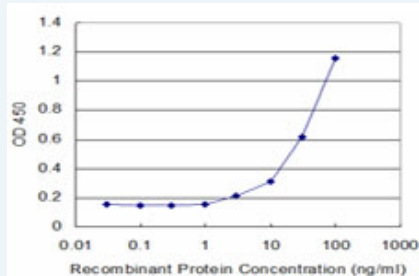


 [enlarge](#)

ELISA

### Applications

Sandwich ELISA (Recombinant protein)



Detection limit for recombinant GST tagged CYP2D6 is approximately 3ng/ml as a capture antibody.

 [Protocol Download](#)

ELISA

### Gene Information

Entrez GeneID: [1565](#)

GeneBank [NG\\_003180](#)

**Accession#:****Protein** [NP\\_000097](#)**Accession#:****Gene Name:** CYP2D6**Gene Alias:** CPD6,CYP2D,CYP2D@,CYP2DL1,MGC120389,MGC120390,P450-DB1,P450C2D,P450DB1**Gene Description:** cytochrome P450, family 2, subfamily D, polypeptide 6**Omim ID:** [124030](#)**Gene Ontology:** [Hyperlink](#)

**Gene Summary:** This gene encodes a member of the cytochrome P450 superfamily of enzymes. The cytochrome P450 proteins are monooxygenases which catalyze many reactions involved in drug metabolism and synthesis of cholesterol, steroids and other lipids. This protein localizes to the endoplasmic reticulum and is known to metabolize as many as 20% of commonly prescribed drugs. Its substrates include debrisoquine, an adrenergic-blocking drug; sparteine and propafenone, both anti-arrhythmic drugs; and amitryptiline, an anti-depressant. The gene is highly polymorphic in the population; certain alleles result in the poor metabolizer phenotype, characterized by a decreased ability to metabolize the enzyme's substrates. The gene is located near two cytochrome P450 pseudogenes on chromosome 22q13.1. Alternatively spliced transcript variants encoding different isoforms have been found for this gene. [provided by RefSeq]

**Other Designations:** cytochrome P450 2D6,cytochrome P450, subfamily IID (debrisoquine, sparteine, etc., -metabolizing), polypeptide 6,cytochrome P450, subfamily IID (debrisoquine, sparteine, etc., -metabolizing)-like 1,debrisoquine 4-hydroxylase,flavoprotein-linked monooxygen

**Gene Pathway**

[Biosynthesis of alkaloids derived from shikimate pathway](#)  
[Drug metabolism - cytochrome P450](#)

**Related Disease**

[Abortion, Habitual](#) [Acute Disease](#) [Adenocarcinoma](#) [Adenocarcinoma, Papillary](#) [Adenoma](#) [Agranulocytosis](#) [Akathisia](#), [Drug-Induced Alcohol-Related Disorders](#) [Alzheimer Disease](#) [Alzheimer disease](#) [Amphetamine-Related Disorders](#) [Anemia, Sickle Cell](#) [Anemia, sickle cell](#) [Anxiety Disorders](#) [Apnea](#) [Arrhythmia](#) [Arthritis, Rheumatoid](#) [Asthma](#) [Asthma](#)

... see more