



# SZABO SCANDIC

Part of Europa Biosite

## Produktinformation



Forschungsprodukte & Biochemikalien



Zellkultur & Verbrauchsmaterial



Diagnostik & molekulare Diagnostik



Laborgeräte & Service

Weitere Information auf den folgenden Seiten!  
See the following pages for more information!



### Lieferung & Zahlungsart

siehe unsere [Liefer- und Versandbedingungen](#)

### Zuschläge

- Mindermengenzuschlag
- Trockeneiszuschlag
- Gefahrgutzuschlag
- Expressversand

### SZABO-SCANDIC HandelsgmbH

Quellenstraße 110, A-1100 Wien

T. +43(0)1 489 3961-0

F. +43(0)1 489 3961-7

[mail@szabo-scandic.com](mailto:mail@szabo-scandic.com)

[www.szabo-scandic.com](http://www.szabo-scandic.com)

[linkedin.com/company/szaboscandic](https://www.linkedin.com/company/szaboscandic) 

## CYP2E1 polyclonal antibody (A01)

Catalog # : H00001571-A01

規格 : [ 50 uL ]

List All

### Specification

**Product Description:** Mouse polyclonal antibody raised against a partial recombinant CYP2E1.

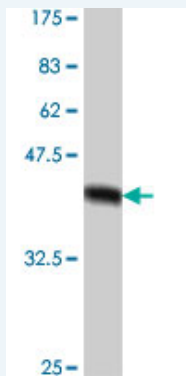
**Immunogen:** CYP2E1 (NP\_000764, 394 a.a. ~ 493 a.a) partial recombinant protein with GST tag.

**Sequence:** DSVLYDNQEFDPDEKFKPEHFLNENGKFKYSDYFKPFSTGKRVCAGEGLARMELFLLLCAILQHFNLKPLVDPKDIDLSPHIGFGCIPPRYKLCVIPRS

**Host:** Mouse

**Reactivity:** Human

**Quality Control Testing:** Antibody Reactive Against Recombinant Protein.



Western Blot detection against Immunogen (37.11 kDa) .

**Storage Buffer:** 50 % glycerol

**Storage Instruction:** Store at -20°C or lower. Aliquot to avoid repeated freezing and thawing.

**MSDS:** [Download](#)

**Datasheet:** [Download](#)

### Applications

**Western Blot (Recombinant protein)**

[Protocol Download](#)

**ELISA**

### Gene Information

**Entrez GeneID:** [1571](#)

**GeneBank Accession#:** [NM\\_000773](#)

**Protein** [NP\\_000764](#)

**Accession#:**

**Gene Name:** CYP2E1

**Gene Alias:** CPE1,CYP2E,P450-J,P450C2E

**Gene Description:** cytochrome P450, family 2, subfamily E, polypeptide 1

**Omim ID:** [124040](#)

**Gene Ontology:** [Hyperlink](#)

**Gene Summary:** This gene encodes a member of the cytochrome P450 superfamily of enzymes. The cytochrome P450 proteins are monooxygenases which catalyze many reactions involved in drug metabolism and synthesis of cholesterol, steroids and other lipids. This protein localizes to the endoplasmic reticulum and is induced by ethanol, the diabetic state, and starvation. The enzyme metabolizes both endogenous substrates, such as ethanol, acetone, and acetal, as well as exogenous substrates including benzene, carbon tetrachloride, ethylene glycol, and nitrosamines which are premutagens found in cigarette smoke. Due to its many substrates, this enzyme may be involved in such varied processes as gluconeogenesis, hepatic cirrhosis, diabetes, and cancer. [provided by RefSeq]

**Other Designations:** OTTHUMP00000020813,OTTHUMP00000046571,cytochrome P450 2E1,cytochrome P450, subfamily IIE (ethanol-inducible), polypeptide 1,flavoprotein-linked monooxygenase,microsomal monooxygenase,xenobiotic monooxygenase

#### Gene Pathway

[Arachidonic acid metabolism](#) [Drug metabolism - cytochrome P450](#) [Linoleic acid metabolism](#)  
[Metabolic pathways](#) [Metabolism of xenobiotics by cytochrome P450](#)

#### Related Disease

[Abnormalities](#) [Acute Disease](#) [Adenocarcinoma](#) [Adenoma](#)  
[Alcohol-Induced Disorders](#), [Nervous System](#) [Alcoholism](#) [Alzheimer Disease](#)  
[Anemia](#), [Aplastic](#) [Aneuploidy](#) [Arteriosclerosis](#) [Asthma](#) [Asthma](#) [Atherosclerosis](#)  
[Atherosclerosis](#) [Brain Neoplasms](#) [Breast cancer](#) [Breast Neoplasms](#) [Bronchitis](#) [Calcinosis](#)

[... see more](#)

[服務條款](#) | [隱私權政策](#) | [著作及商標](#) | [網站地圖](#)

©2016 亞諾法生技股份有限公司 Abnova Corporation. 版權所有.