



SZABO SCANDIC

Part of Europa Biosite

Produktinformation



Forschungsprodukte & Biochemikalien



Zellkultur & Verbrauchsmaterial



Diagnostik & molekulare Diagnostik



Laborgeräte & Service

Weitere Information auf den folgenden Seiten!
See the following pages for more information!



Lieferung & Zahlungsart

siehe unsere [Liefer- und Versandbedingungen](#)

Zuschläge

- Mindermengenzuschlag
- Trockeneiszuschlag
- Gefahrgutzuschlag
- Expressversand

SZABO-SCANDIC HandelsgmbH

Quellenstraße 110, A-1100 Wien

T. +43(0)1 489 3961-0

F. +43(0)1 489 3961-7

mail@szabo-scandic.com

www.szabo-scandic.com

[linkedin.com/company/szaboscandic](https://www.linkedin.com/company/szaboscandic) 



CYP2E1 purified MaxPab mouse polyclonal antibody (B01P) MaxPab®

Catalog # : H00001571-B01P

規格 : [50 ug]

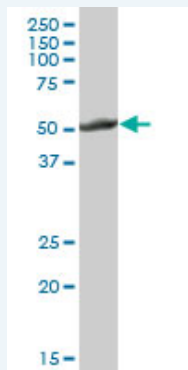
[List All](#)

Specification


Product Description:	Mouse polyclonal antibody raised against a full-length human CYP2E1 protein.
Immunogen:	CYP2E1 (NP_000764.1, 1 a.a. ~ 493 a.a) full-length human protein.
Sequence:	MSALGVTVALLVAAFLLLVSMWRQVHSSWNLPPGPFPLPIIGNLFQLE LKNIPKSFTRLAQRFGPVFTLYVGSQRMVVMHGYKAVKEALLDYKDEFS GRGDLPAFHAHRDRGIIFNNGPTWKDIRRFSLTTLRNYGMGKQGNESRI QREAHFLLEALRKTQGGQPFDPFTFLIGCAPCNVIADILFRKHFDDYNDKFL RLMYLFNENFHLLSTPWLQLYNNFSPFLHYLPGSHRKVIKNAEVKEYVS ERVKEHHQSLDPNCPDLDCLLVEMEKEKHAERLYTMDGITVTVADL FFAGTETTSTTLRYGLLILMKYPEIEEKLHEEIDRVIGPSRIPAICKDRQEMPY MDAWHEIQRFITLVPSNLPHEATRDTIFRGYLIPKGTWWPTLDSVLYDN QEFDPDEKFKPEHFLNENGKFKYSDFKPFSTGKRVCCAGEGLARMELFL LLCAILQHFNKPLVDPKDIDLSPHIGFGCIPPRYKLCVIPRS
Host:	Mouse
Reactivity:	Human
Quality Control Testing:	Antibody reactive against mammalian transfected lysate.
Storage Buffer:	In 1x PBS, pH 7.4
Storage Instruction:	Store at -20°C or lower. Aliquot to avoid repeated freezing and thawing.
MSDS:	 Download
Datasheet:	 Download

Applications

Western Blot (Tissue lysate)



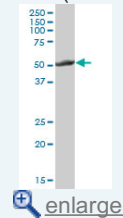
CYP2E1 MaxPab polyclonal antibody. Western Blot analysis of CYP2E1 expression in human liver.

 [Protocol Download](#)

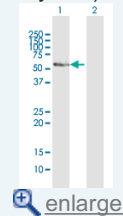
Western Blot (Transfected lysate)

Application Image

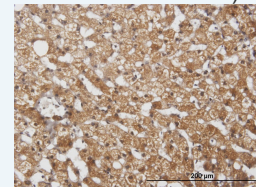
Western Blot (Tissue lysate)



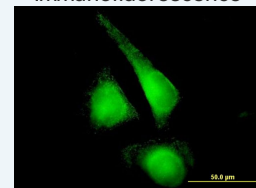
Western Blot (Transfected lysate)

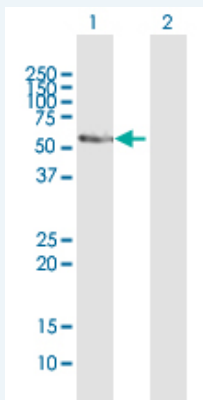


Immunohistochemistry (Formalin/PFA-fixed paraffin-embedded sections)



Immunofluorescence



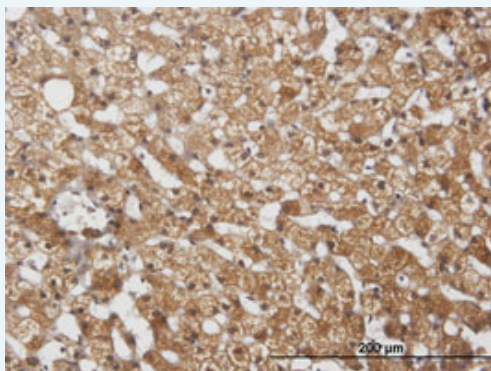


Western Blot analysis of CYP2E1 expression in transfected 293T cell line ([H00001571-T01](#)) by CYP2E1 MaxPab polyclonal antibody.

Lane 1: CYP2E1 transfected lysate(54.23 KDa).
Lane 2: Non-transfected lysate.

[Protocol Download](#)

Immunohistochemistry (Formalin/PFA-fixed paraffin-embedded sections)

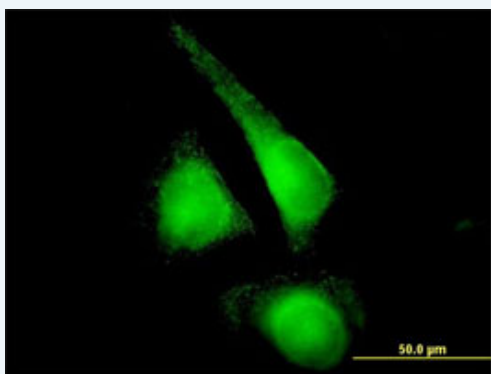


enlarge this image

Immunoperoxidase of purified MaxPab antibody to CYP2E1 on formalin-fixed paraffin-embedded human liver. [antibody concentration 3 ug/ml]

[Protocol Download](#)

Immunofluorescence



enlarge this image

Immunofluorescence of purified MaxPab antibody to CYP2E1 on HeLa cell. [antibody concentration 10 ug/ml]

[Protocol Download](#)

Gene Information

Entrez GeneID: [1571](#)

GeneBank [NM_000773.3](#)
Accession#:

Protein [NP_000764.1](#)
Accession#:

Gene Name: CYP2E1

Gene Alias: CPE1,CYP2E,P450-J,P450C2E

Gene Description: cytochrome P450, family 2, subfamily E, polypeptide 1

Omim ID: [124040](#)

Gene Ontology: [Hyperlink](#)

Gene Summary: This gene encodes a member of the cytochrome P450 superfamily of enzymes. The cytochrome P450 proteins are monooxygenases which catalyze many reactions involved in drug metabolism and synthesis of cholesterol, steroids and other lipids. This protein localizes to the endoplasmic reticulum and is induced by ethanol, the diabetic state, and starvation. The enzyme metabolizes both endogenous substrates, such as ethanol, acetone, and acetal, as well as exogenous substrates including benzene, carbon tetrachloride, ethylene glycol, and nitrosamines which are premutagens found in cigarette smoke. Due to its many substrates, this enzyme may be involved in such varied processes as gluconeogenesis, hepatic cirrhosis, diabetes, and cancer. [provided by RefSeq]

Other Designations: OTTHUMP00000020813,OTTHUMP00000046571,cytochrome P450 2E1,cytochrome P450, subfamily IIE (ethanol-inducible), polypeptide 1,flavoprotein-linked monooxygenase,microsomal monooxygenase,xenobiotic monooxygenase

Gene Pathway

[Arachidonic acid metabolism](#) [Drug metabolism - cytochrome P450](#) [Linoleic acid metabolism](#)
[Metabolic pathways](#) [Metabolism of xenobiotics by cytochrome P450](#)

Related Disease

[Abnormalities](#) [Acute Disease](#) [Adenocarcinoma](#) [Adenoma](#)
[Alcohol-Induced Disorders](#), [Nervous System](#) [Alcoholism](#) [Alzheimer Disease](#)
[Anemia](#), [Aplastic Aneuploidy](#) [Arteriosclerosis](#) [Asthma](#) [Asthma](#) [Atherosclerosis](#)
[Atherosclerosis](#) [Brain Neoplasms](#) [Breast cancer](#) [Breast Neoplasms](#) [Bronchitis](#) [Calcinosis](#)

... see more