



# SZABO SCANDIC

Part of Europa Biosite

## Produktinformation



Forschungsprodukte & Biochemikalien



Zellkultur & Verbrauchsmaterial



Diagnostik & molekulare Diagnostik



Laborgeräte & Service

Weitere Information auf den folgenden Seiten!  
See the following pages for more information!



### Lieferung & Zahlungsart

siehe unsere [Liefer- und Versandbedingungen](#)

### Zuschläge

- Mindermengenzuschlag
- Trockeneiszuschlag
- Gefahrgutzuschlag
- Expressversand

### SZABO-SCANDIC HandelsgmbH

Quellenstraße 110, A-1100 Wien

T. +43(0)1 489 3961-0

F. +43(0)1 489 3961-7

[mail@szabo-scandic.com](mailto:mail@szabo-scandic.com)

[www.szabo-scandic.com](http://www.szabo-scandic.com)

[linkedin.com/company/szaboscandic](https://www.linkedin.com/company/szaboscandic) 

## CYP2E1 purified MaxPab rabbit polyclonal antibody (D01P) MaxPab®

Catalog # : H00001571-D01P

規格 : [ 100 ug ]

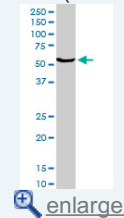
[List All](#)

### Specification

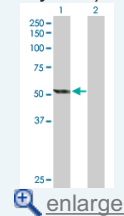
<b>Product Description:</b>	Rabbit polyclonal antibody raised against a full-length human CYP2E1 protein.
<b>Immunogen:</b>	CYP2E1 (NP_000764.1, 1 a.a. ~ 493 a.a) full-length human protein.
<b>Sequence:</b>	MSALGVTVALLVAAFLLLVSMWRQVHSSWNLPPGPFPLPIIGNLFQLE LKNIPKSFTRLAQRFGPVFTLYVGSQRMVVMHGYKAVKEALLDYKDEFS GRGDLPAFHAHRDRGIIFNNGPTWKDIRRFSLTTLRNYGMGKQGNESRI QREAHFLLEALRKTQGQPFDPFTFLIGCAPCNVIADILFRKHFDYNDEKFL RLMYLFNENFHLLSTPWLQLYNNFSPFLHYLPGSHRKYIKNVAEVKEYVS ERVKEHHQSLDPNCPDRLTDCLLVEMEKEKHAERLYTMDGITVTVADL FFAGTETTSTTLRYGLLILMKYPEIEEKLHEEIDRVIGPSRIPAIDRQEMPY MDAWHEIQRFITLVPSNLPHEATRDTIFRGYLIPKGTWWPTLDSVLYDN QEFDPDEKFKPEHFLNENGKFKYSDFKPFSTGKRVCAGEGLARMELFL LLCAILQHFNKPLVDPKDIDLSPHIGFGCIPPRYKLCVIPRS
<b>Host:</b>	Rabbit
<b>Reactivity:</b>	Human
<b>Quality Control Testing:</b>	Antibody reactive against mammalian transfected lysate.
<b>Storage Buffer:</b>	In 1x PBS, pH 7.4
<b>Storage Instruction:</b>	Store at -20°C or lower. Aliquot to avoid repeated freezing and thawing.
<b>MSDS:</b>	<a href="#">Download</a>
<b>Datasheet:</b>	<a href="#">Download</a>

### Application Image

Western Blot (Tissue lysate)



Western Blot (Transfected lysate)

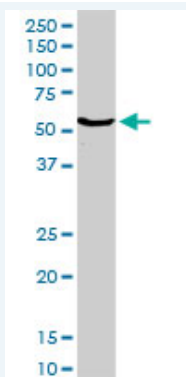


### Publication Reference


1. [Quantification of cytochrome 2E1 in human liver microsomes using a validated indirect ELISA.](#)  
De Bock L, Colin P, Boussery K, Van Bocxlaer J.J Pharm Biomed Anal. 2014 Jan 25;88:536-41.

### Applications

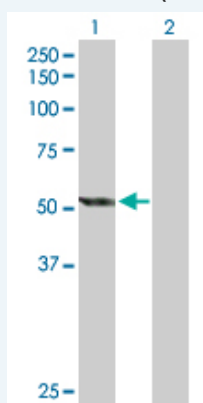
Western Blot (Tissue lysate)



CYP2E1 MaxPab rabbit polyclonal antibody. Western Blot analysis of CYP2E1 expression in human colon.

 [Protocol Download](#)

#### Western Blot (Transfected lysate)



Western Blot analysis of CYP2E1 expression in transfected 293T cell line ([H00001571-T01](#)) by CYP2E1 MaxPab polyclonal antibody.

Lane 1: CYP2E1 transfected lysate(56.80 KDa).

Lane 2: Non-transfected lysate.

 [Protocol Download](#)

#### Gene Information

**Entrez GeneID:** [1571](#)

**GeneBank** [NM\\_000773.3](#)

**Accession#:**

**Protein** [NP\\_000764.1](#)

**Accession#:**

**Gene Name:** CYP2E1

**Gene Alias:** CPE1,CYP2E,P450-J,P450C2E

**Gene** cytochrome P450, family 2, subfamily E, polypeptide 1

**Description:**

**Omim ID:** [124040](#)

**Gene Ontology:** [Hyperlink](#)

**Gene Summary:** This gene encodes a member of the cytochrome P450 superfamily of enzymes. The cytochrome P450 proteins are monooxygenases which catalyze many reactions involved in drug metabolism and synthesis of cholesterol, steroids and other lipids. This protein localizes to the endoplasmic reticulum and is induced by ethanol, the diabetic state, and starvation. The enzyme metabolizes both endogenous substrates, such as ethanol, acetone, and acetal, as well as exogenous substrates including benzene, carbon tetrachloride, ethylene glycol, and

nitrosamines which are premutagens found in cigarette smoke. Due to its many substrates, this enzyme may be involved in such varied processes as gluconeogenesis, hepatic cirrhosis, diabetes, and cancer. [provided by RefSeq]

**Other** OTTHUMP00000020813,OTTHUMP00000046571,cytochrome P450  
**Designations:** 2E1,cytochrome P450, subfamily IIE (ethanol-inducible), polypeptide 1,flavoprotein-linked monooxygenase,microsomal monooxygenase,xenobiotic monooxygenase

### Gene Pathway

[Arachidonic acid metabolism](#) [Drug metabolism - cytochrome P450](#) [Linoleic acid metabolism](#)  
[Metabolic pathways](#) [Metabolism of xenobiotics by cytochrome P450](#)

### Related Disease

[Abnormalities](#) [Acute Disease](#) [Adenocarcinoma](#) [Adenoma](#)  
[Alcohol-Induced Disorders, Nervous System](#) [Alcoholism](#) [Alzheimer Disease](#)  
[Anemia](#), [Aplastic Aneuploidy](#) [Arteriosclerosis](#) [Asthma](#) [Asthma](#) [Atherosclerosis](#)  
[Atherosclerosis](#) [Brain Neoplasms](#) [Breast cancer](#) [Breast Neoplasms](#) [Bronchitis](#) [Calcinosis](#)

... see more

[服務條款](#) | [隱私權政策](#) | [著作及商標](#) | [網站地圖](#)

©2016 亞諾法生技股份有限公司 Abnova Corporation. 版權所有.